

## IGY××L Hydrostatic Drive Series (Wheel Motor)

### 1. Brief Introduction

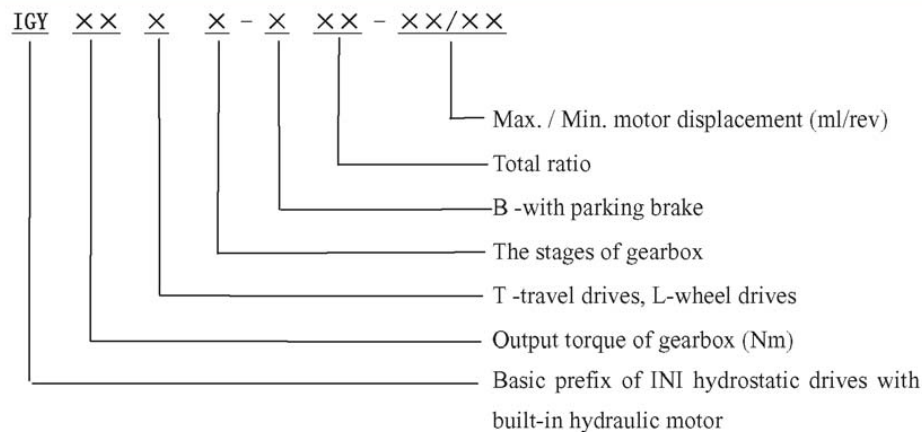
The IGY××L hydrostatic drive series adopt our patented technology and advanced manufacture method. The series consist of built-in variable displacement piston motor, multi-disc brake, planetary gearbox, and functional valve block. The drives feature high working efficiency, great reliability, compact design, high working pressure and Hi-low speed switch control. Due to high load capacity bearing and bolts, the drives can be directly installed in the wheel of mobile vehicles.

The Dimensions and technical performance of the drives conform to the Fairfield type. The drives can also be used for replacement in closed loop system or open loop system.

The drives described in this catalog are of the standard type. Other design variants with different ratio, dimensions, power characteristics and different hydraulic motor are available if so requested for specific applications.

The drives have been widely applied in aerial platform, road roller, wheeled excavator, track vehicles, and other wheeled mobile equipment. The drives not only have been used by domestic famous aerial platform and road roller company, but also have been exported to Russia, Spain and so on.

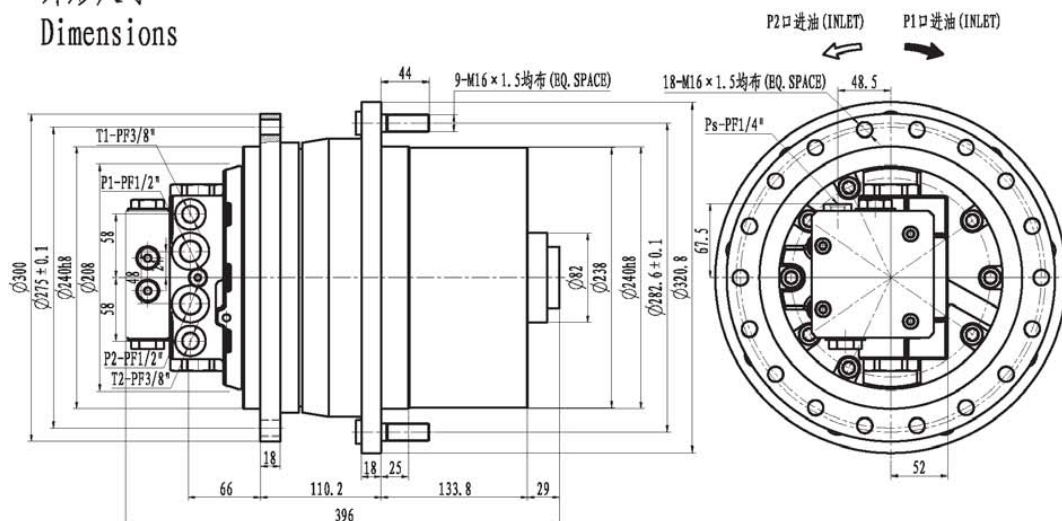
### 2. Model Options



### 3. Options Example

IGY3400L2-B47-21/10 represents that the drive has output torque of 3400Nm, two stages planetary gearbox for wheel drives with a total ratio of 47, fitted with a multi-disc parking brake, and high speed axial hydraulic motor. The hydraulic motor has a variable displacement (two speed) of 21ml/rev in low speed position and 10ml/rev in high speed position.

## 外形尺寸 Dimensions



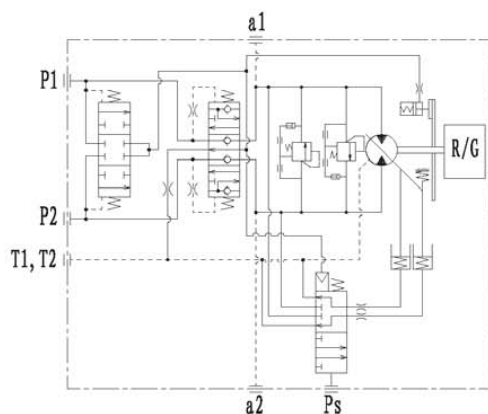
## 技术参数 Specifications

最大输出扭矩 Max. Output Torque N.m	最大总排量 Max. Total Displacement ml/rev	液压马达排量 Motor Displacement ml/rev	传动比 Gear Ratio	最高转速 Max. Speed rpm	最大流量 Max. Flow L/min	最高压力 Max. Pressure MPa	重量 Mass Kg	适用机重 Applicable Vehicle Mass Ton
10000	2673.8	51.9/34 44.4/26.6	42.123 51.518	55	80	35	120	8~10

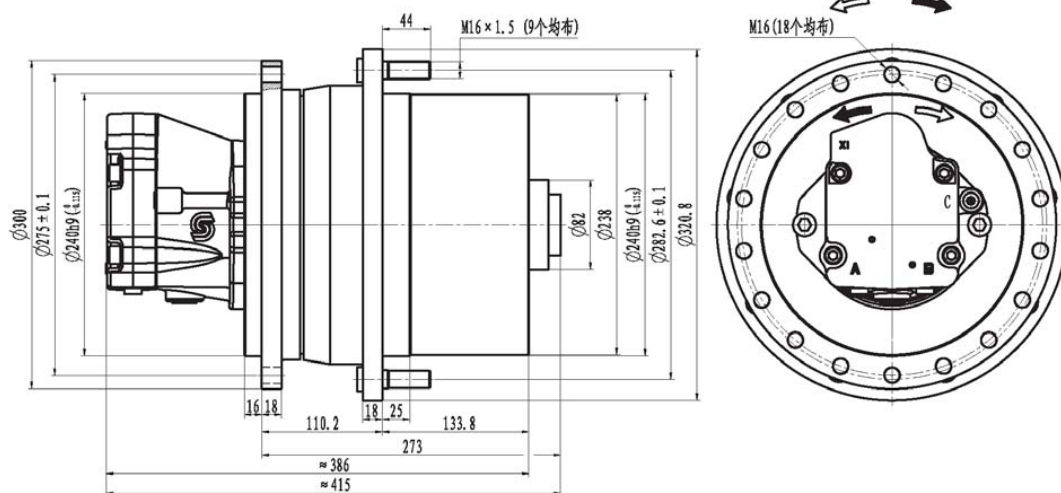
注：本产品适用于开式系统，如需闭式系统产品请联系应用工程师。

Note: The product suitable for open loop system, if you need closed loop system product, please contact iNi appl. engineer.

## 液压原理图



### 外形尺寸

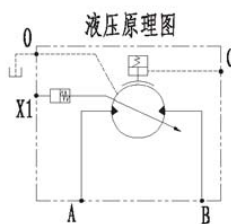


### 技术参数

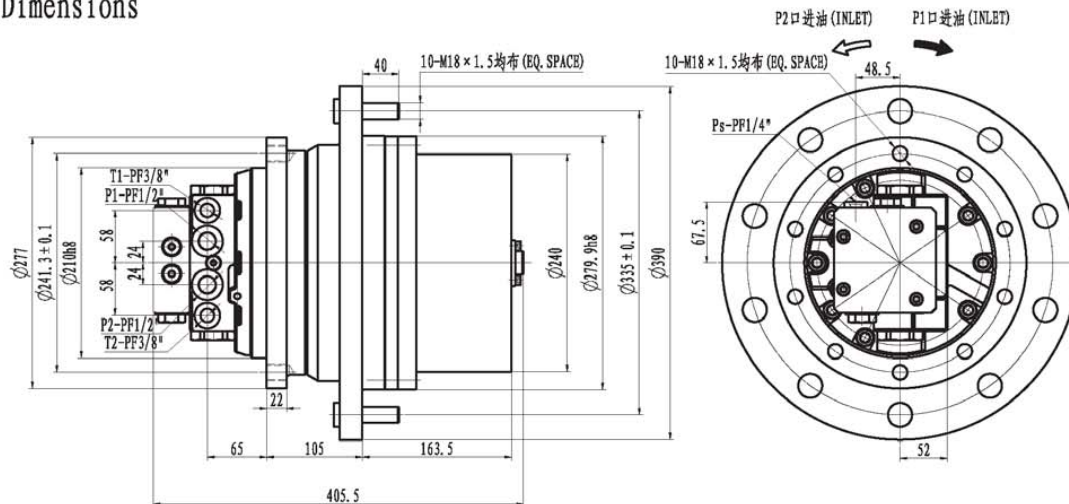
输出扭矩 (N · m)		传动比	制动器			液压马达		
连续	最大		静制动扭矩 (N · m)	初始释放压力 (MPa)	完全释放压力 (MPa)	型号	最高压力 (MPa)	最高转速 (r/min)
5500	11000		46.435	230	1.2	1.8	萨澳 - 丹佛斯	35
		42.123	260	KC/LC系列插装马达				

1、本产品适用于闭式系统；

2、本产品配置有离合解锁机构，可以方便实现故障下拖行；



## 外形尺寸 Dimensions



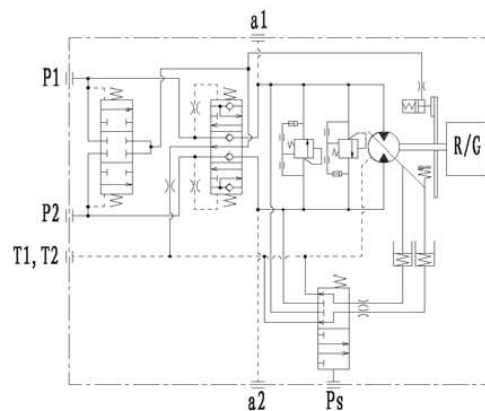
## 技术参数 Specifications

最大输出扭矩	最大总排量	液压马达排量		传动比	最高转速	最大流量	最高压力	重量	适用机重
Max. Output Torque	Max. Total Displacement	Motor Displacement		Gear Ratio	Max. Speed	Max. Flow	Max. Pressure	Mass	Applicable Vehicle Mass
N. m	ml/rev	ml/rev			rpm	L/min	MPa	Kg	Ton
15000	4019.6	51.9/34 44.4/26.6	51.9/28.4 44.4/22.2	77.449	35	80	30	180	18

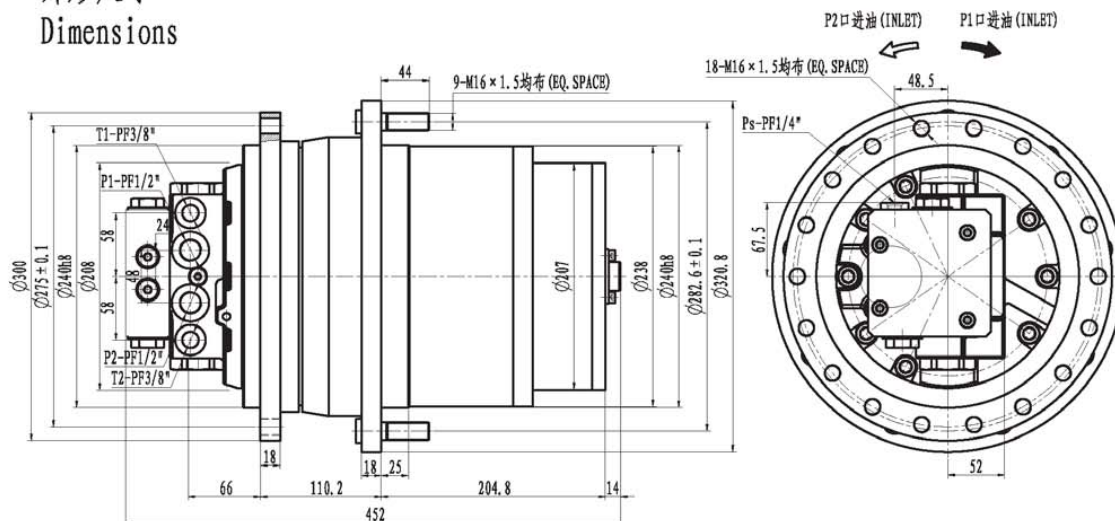
注：本产品适用于开式系统，如需闭式系统产品请联系应用工程师。

Note: The product suitable for open loop system, if you need closed loop system product, please contact iNi appl. engineer.

## 液压原理图



## 外形尺寸 Dimensions



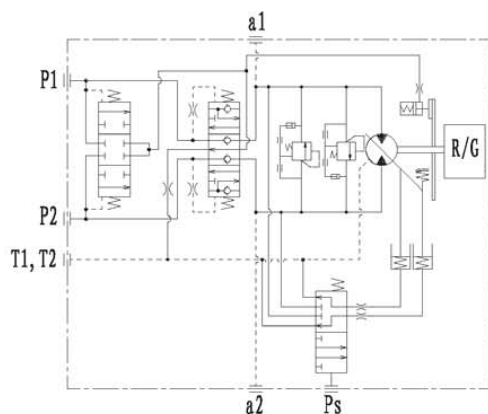
## 技术参数 Specifications

最大输出扭矩	最大总排量	液压马达排量		传动比	最高转速	最大流量	最高压力	重量	适用机重
Max. Output Torque	Max. Total Displacement	Motor Displacement		Gear Ratio	Max. Speed	Max. Flow	Max. Pressure	Mass	Applicable Vehicle Mass
N.m	ml/rev	ml/rev			rpm	L/min	MPa	Kg	Ton
15000	4883.0	51.9/34 44.4/26.6	51.9/28.4 44.4/22.2	94.087	30	80	25	180	18

注：本产品适用于开式系统，如需闭式系统产品请联系应用工程师。

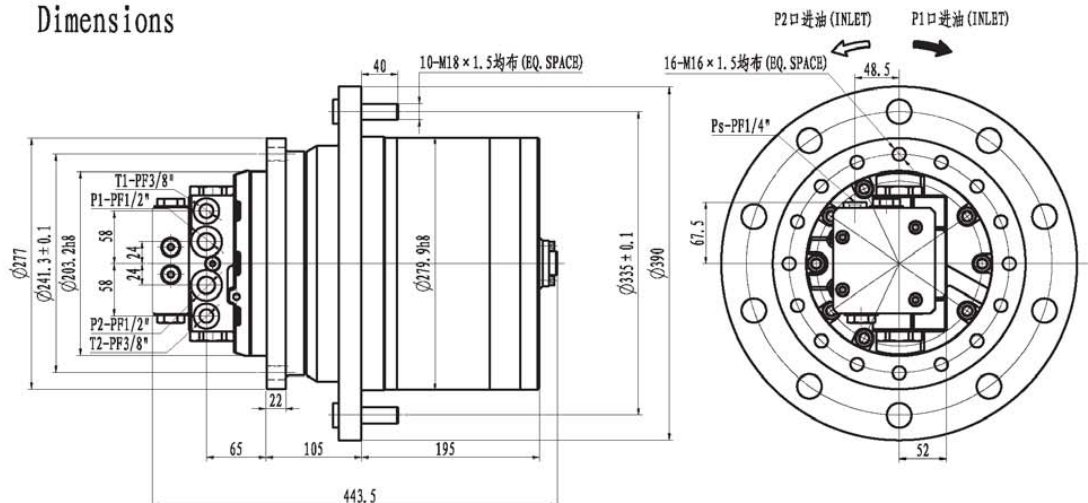
Note: The product suitable for open loop system, if you need closed loop system product, please contact iNi appl. engineer.

## 液压原理图





## 外形尺寸 Dimensions



## 技术参数 Specifications

最大输出扭矩	最大总排量	液压马达排量		传动比	最高转速	最大流量	最高压力	重量	适用机重
Max. Output Torque	Max. Total Displacement	Motor Displacement		Gear Ratio	Max. Speed	Max. Flow	Max. Pressure	Mass	Applicable Vehicle Mass
N. m	ml/rev	ml/rev			rpm	L/min	MPa	Kg	Ton
17000	4856	51.9/34 44.4/26.6	51.9/28.4 44.4/22.2	93.565	30	80	30	200	18

注：本产品适用于开式系统，如需闭式系统产品请联系应用工程师。

Note: The product suitable for open loop system, if you need closed loop system product, please contact iNi appl. engineer.

## 液压原理图

