

## IGY××T Hydrostatic Drive Series ( Travel Motor )

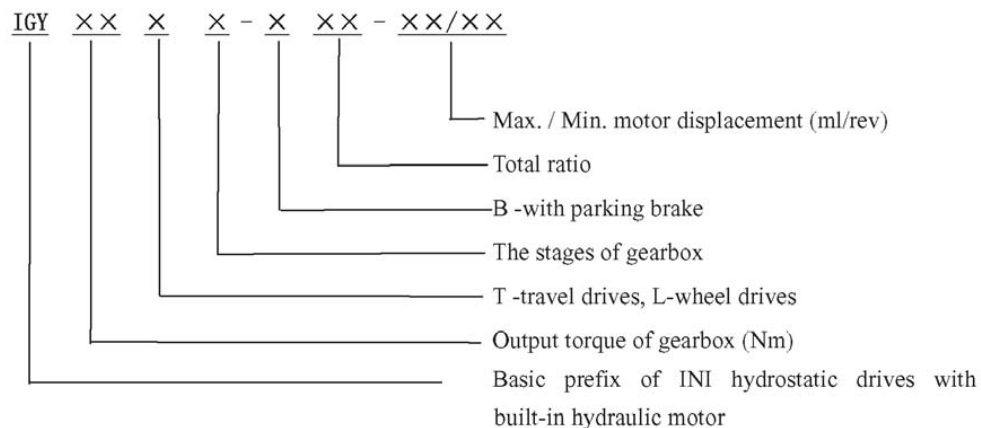
### 1. Brief Introduction

The IGY××T hydrostatic drive series consist of built-in variable displacement piston motor, multi-disc brake, planetary gearbox, and functional valve block. The drives feature high working efficiency, long life, great reliability, compact design, high working pressure and Hi-low speed switch control. The case-rotation type travel drives not only can be directly installed inside the crawler or wheel, but also can be used in road header or milling machine for power turning drives.

The drives adopt our patented technology and design experience. The Dimensions and technical performance of the drives conform to Nebtesco, KYB, Nachi, and TONGMYUNG. So our drives can also be used for replacement.

The drives described in this catalog are of the standard type. Other design variants with different ratio, dimensions, and power characteristics are available if so requested for specific applications. The drives have been widely applied in crawler excavator, crawler cranes, road milling machine, road header, road roller, track vehicles, aerial platform, and self-propel drill rigs. The drives not only have been used by domestic customer such as SANY, XCMG, ZOOMLION, but also have been exported to Southeast Asia, Middle East, India, South Korea, Netherlands, Germany and Russia and so on.

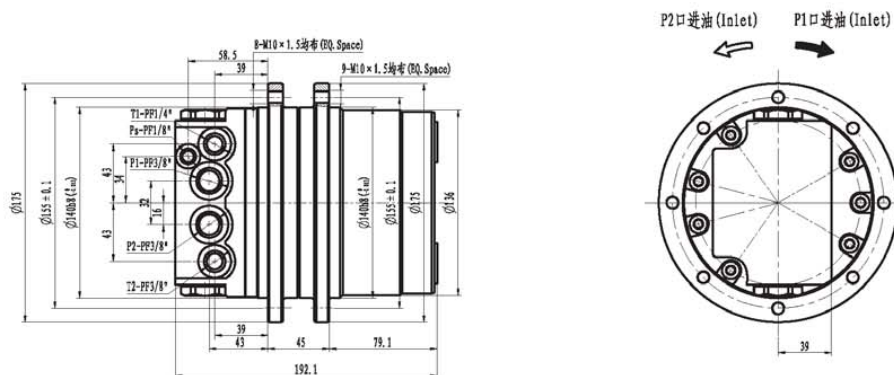
### 2. Model Options



### 3. Options Example

IGY4800T2-B45-34/17 represents that the drive has output torque of 4800Nm, two stages planetary gearbox for travel drives with a total ratio of 45, fitted with a multi-disc parking brake, and high speed axial hydraulic motor. The hydraulic motor has a variable displacement (two speed) of 34ml/rev in low speed position and 17ml/rev in high speed position.

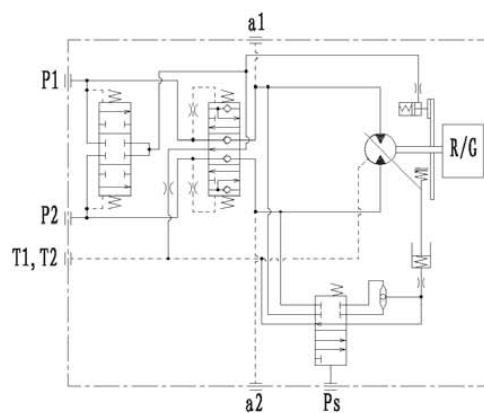
## 外形尺寸 Dimensions



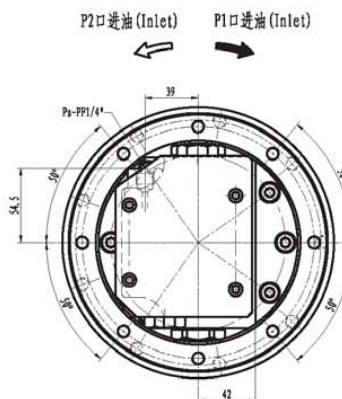
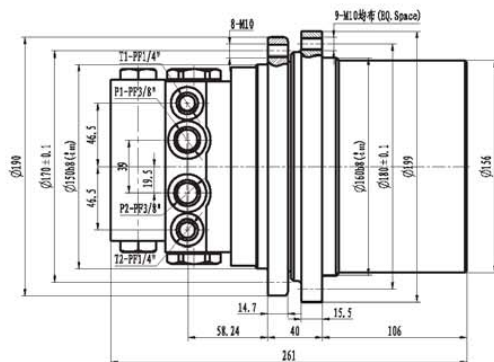
## 技术参数 Specifications

最大输出扭矩 Max. Output Torque	最大总排量 Max. Total Displacement	液压马达排量 Motor Displacement	传动比 Gear Ratio	最高转速 Max. Speed	最大流量 Max. Flow	最高压力 Max. Pressure	重量 Mass	适用机重 Applicable Vehicle Mass
N. m	ml/rev	ml/rev		rpm	L/min	MPa	Kg	Ton
1396	458.3	11.4/7.3 16.5/10.6	36.96 25.26	80	20	24.5	17	1~1.5

## 液压原理图



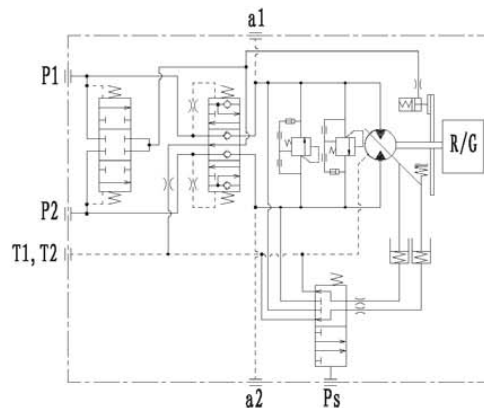
## 外形尺寸 Dimensions



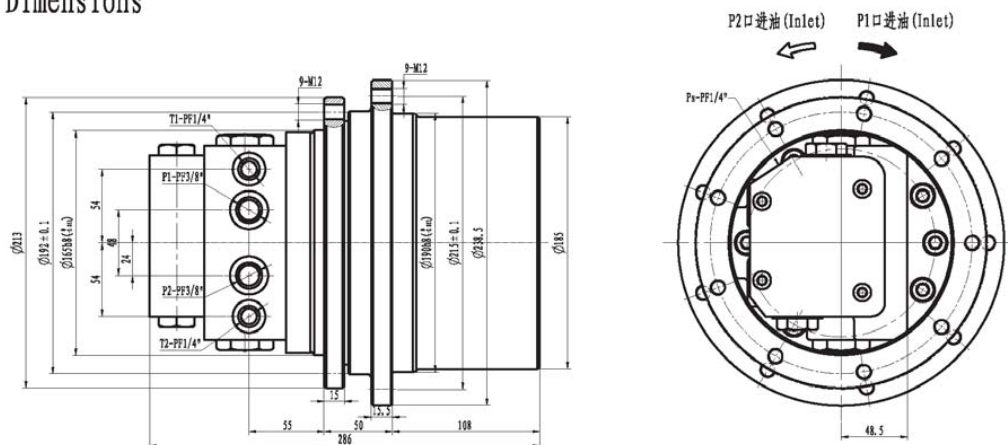
## 技术参数 Specifications

最大输出扭矩 Max. Output Torque N.m	最大总排量 Max. Total Displacement ml/rev	液压马达排量 Motor Displacement ml/rev	传动比 Gear Ratio	最高转速 Max. Speed rpm	最大流量 Max. Flow L/min	最高压力 Max. Pressure MPa	重量 Mass Kg	适用机重 Applicable Vehicle Mass Ton
2160	773	11.4/7.3 16.5/10.6	33.980 36.474 42.958	70	30	24.5	27	2~3

## 液压原理图



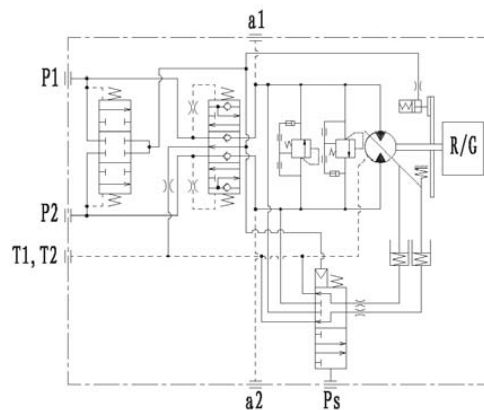
## 外形尺寸 Dimensions



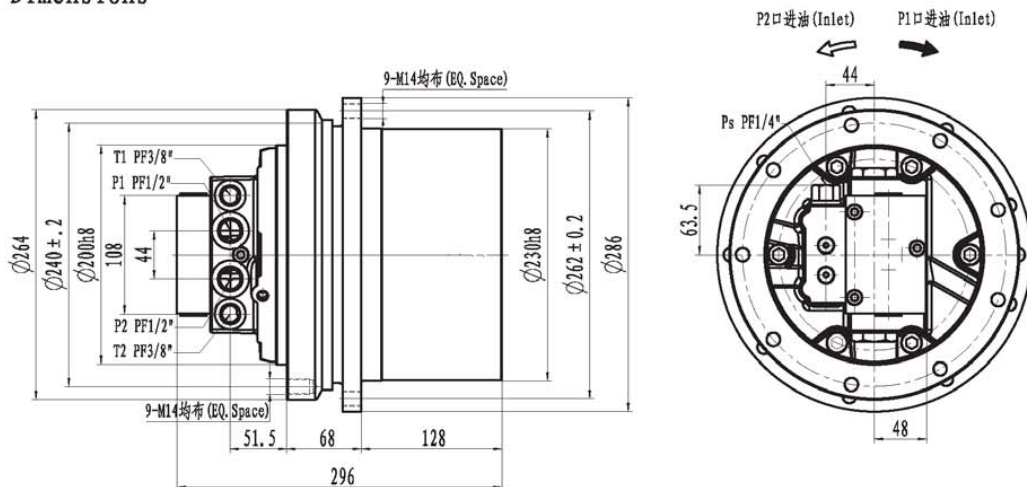
## 技术参数 Specifications

最大输出扭矩 Max. Output Torque N.m	最大总排量 Max. Total Displacement ml/rev	液压马达排量 Motor Displacement ml/rev	传动比 Gear Ratio	最高转速 Max. Speed rpm	最大流量 Max. Flow L/min	最高压力 Max. Pressure MPa	重量 Mass Kg	适用机重 Applicable Vehicle Mass Ton
3140	954	18.0/9.0	45 48.636 53	60	40	27.5	37	3~4

## 液压原理图



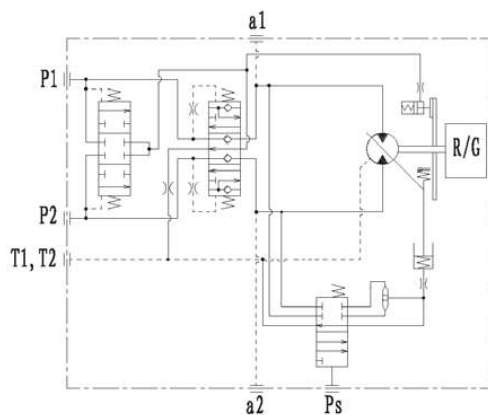
## 外形尺寸 Dimensions



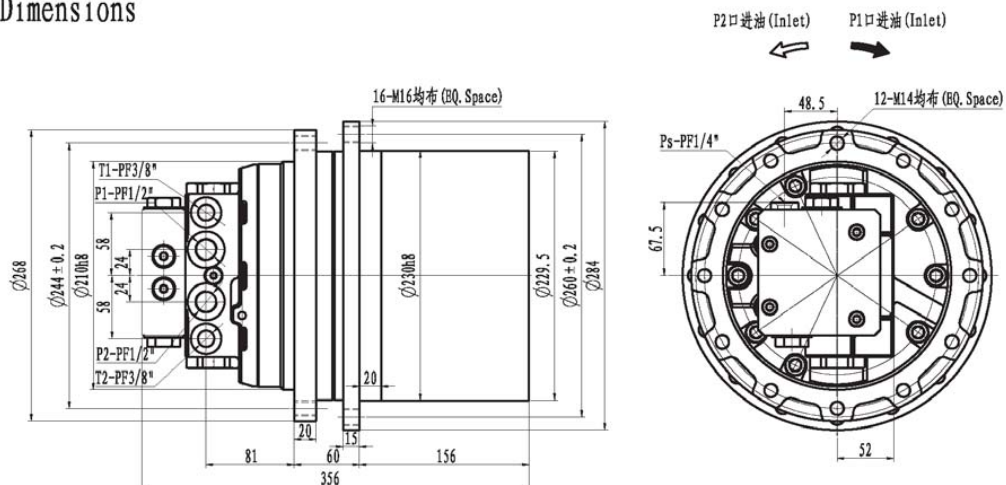
## 技术参数 Specifications

最大输出扭矩 Max. Output Torque N. m	最大总排量 Max. Total Displacement ml/rev	液压马达排量 Motor Displacement ml/rev	传动比 Gear Ratio	最高转速 Max. Speed rpm	最大流量 Max. Flow L/min	最高压力 Max. Pressure MPa	重量 Mass Kg	适用机重 Applicable Vehicle Mass Ton
7000	1874.3	34.9/22.7 34.9/17.5	45.057 53.706	55	60	30	60	5~6

## 液压原理图



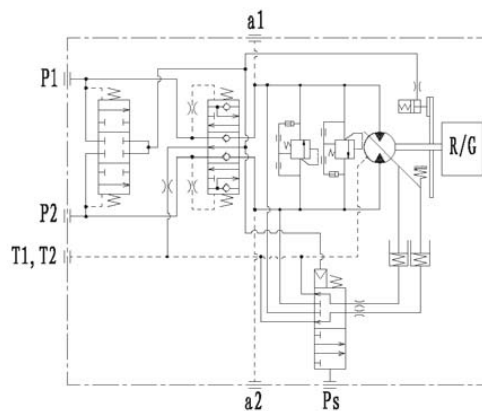
## 外形尺寸 Dimensions



## 技术参数 Specifications

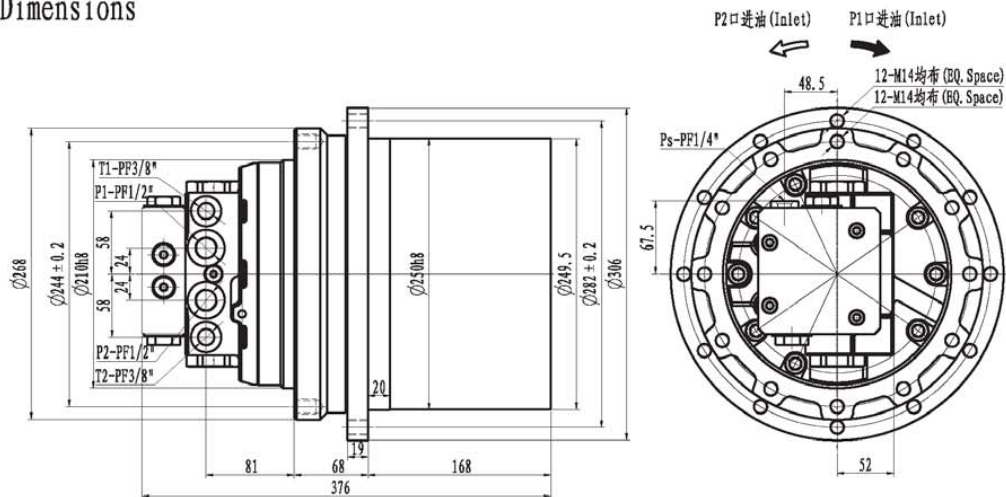
最大输出扭矩 Max. Output Torque N. m	最大总排量 Max. Total Displacement ml/rev	液压马达排量 Motor Displacement ml/rev	传动比 Gear Ratio	最高转速 Max. Speed rpm	最大流量 Max. Flow L/min	最高压力 Max. Pressure MPa	重量 Mass Kg	适用机重 Applicable Vehicle Mass Ton
9000	2750.7	51.9/34 44.4/26.6	53	55	80	30	75	6~8

## 液压原理图





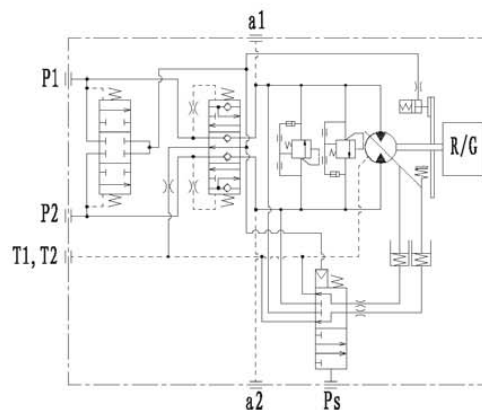
## 外形尺寸 Dimensions



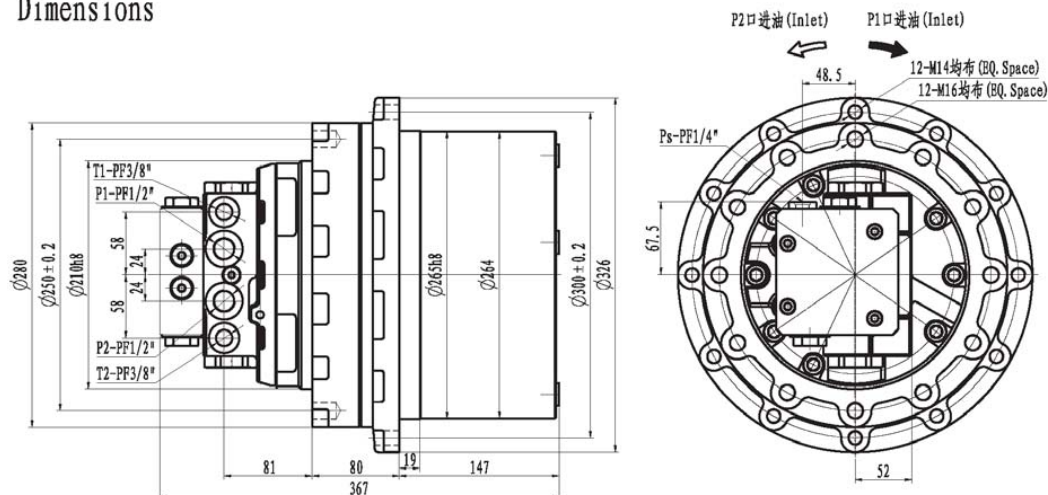
## 技术参数 Specifications

最大输出扭矩	最大总排量	液压马达排量		传动比	最高转速	最大流量	最高压力	重量	适用机重
Max. Output Torque	Max. Total Displacement	Motor Displacement		Gear Ratio	Max. Speed	Max. Flow	Max. Pressure	Mass	Applicable Vehicle Mass
N. m	ml/rev	ml/rev			rpm	L/min	MPa	Kg	Ton
9000	2787.3	51.9/34 44.4/26.6	51.9/28.4 44.4/22.2	53.706	55	80	30	85	7~8

### 液压原理图



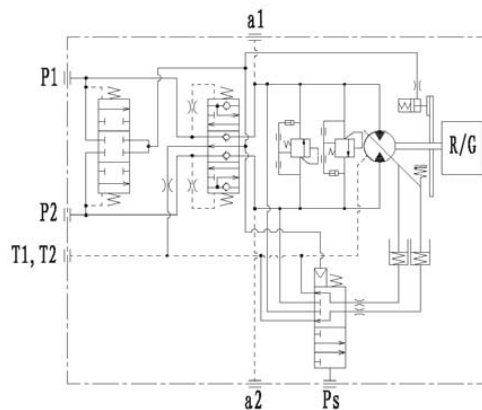
## 外形尺寸 Dimensions



## 技术参数 Specifications

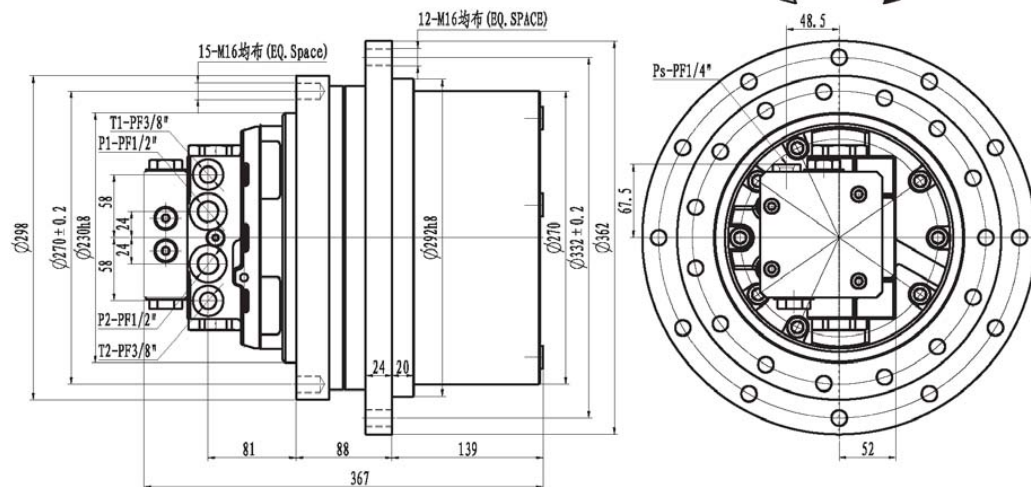
最大输出扭矩 Max. Output Torque N.m	最大总排量 Max. Total Displacement ml/rev	液压马达排量 Motor Displacement ml/rev	传动比 Gear Ratio	最高转速 Max. Speed rpm	最大流量 Max. Flow L/min	最高压力 Max. Pressure MPa	重量 Mass Kg	适用机重 Applicable Vehicle Mass Ton
10000	3311.2	51.9/34 44.4/26.6	53 63.8	55	80	30	95	8~9

## 液压原理图





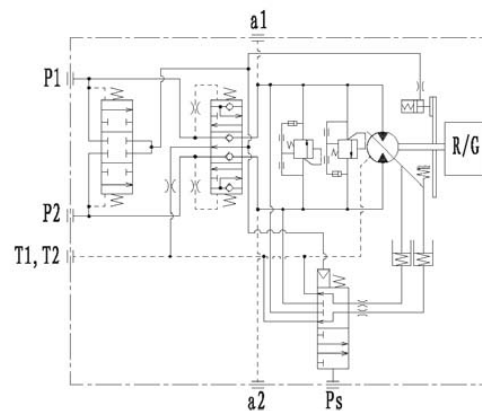
## 外形尺寸 Dimensions



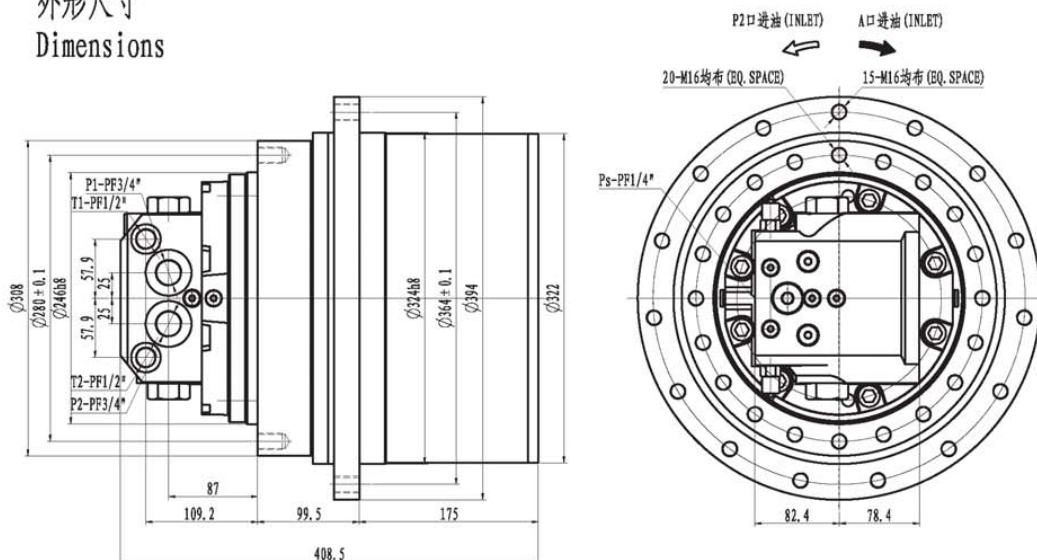
## 技术参数 Specifications

最大输出扭矩	最大总排量	液压马达排量		传动比	最高转速	最大流量	最高压力	重量	适用机重
Max. Output Torque	Max. Total Displacement	Motor Displacement		Gear Ratio	Max. Speed	Max. Flow	Max. Pressure	Mass	Applicable Vehicle Mass
N. m	ml/rev	ml/rev			rpm	L/min	MPa	Kg	Ton
12000	2750.7	51.9/34 44.4/26.6	51.9/28.4 44.4/22.2	53	55	80	30	110	9~10

### 液压原理图

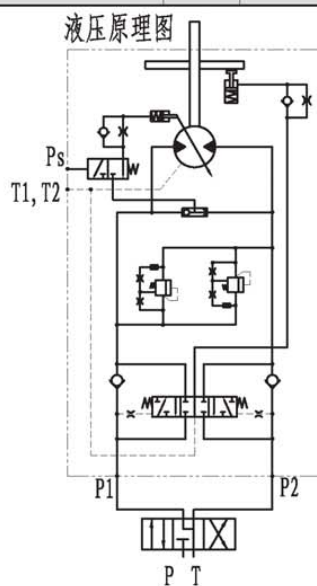


## 外形尺寸 Dimensions

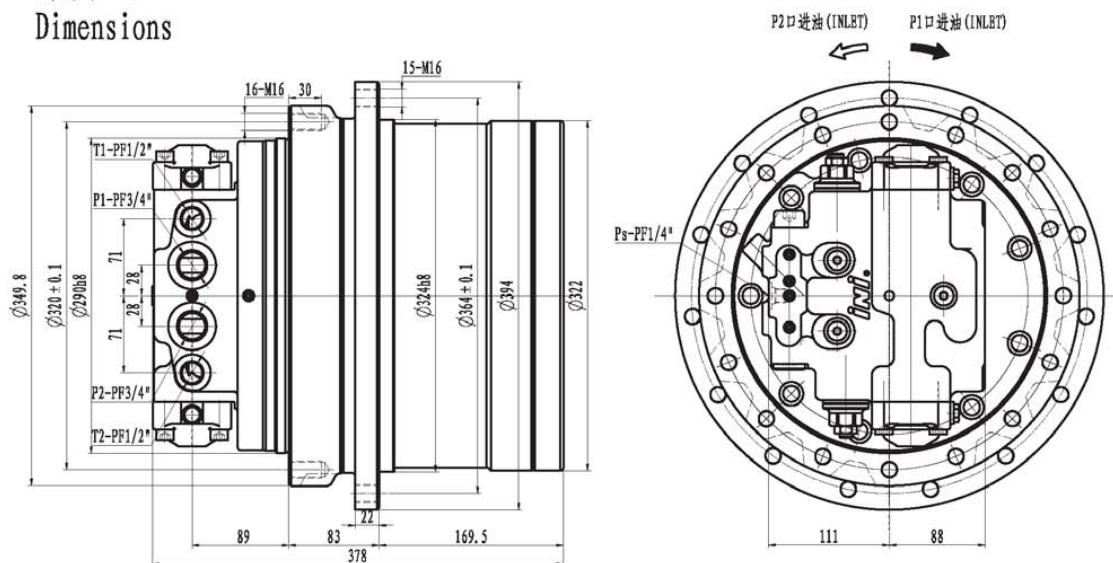


## 技术参数 Specifications

最大输出扭矩 Max. Output Torque N. m	最大总排量 Max. Total Displacement ml/rev	液压马达排量 Motor Displacement ml/rev	传动比 Gear Ratio	最高转速 Max. Speed rpm	最大流量 Max. Flow L/min	最高压力 Max. Pressure MPa	重量 Mass Kg	适用机重 Applicable Vehicle Mass Ton
18000	4862.6	87.3/55.5 80.3/35.3	55.7	55	150	35	140	10~12



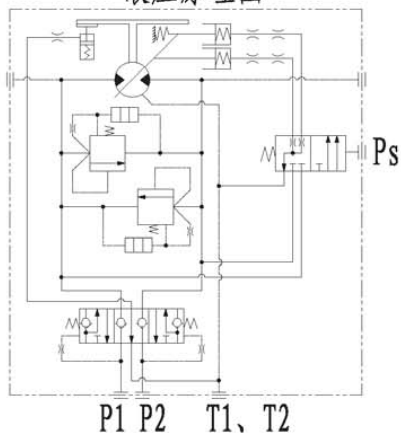
## 外形尺寸 Dimensions



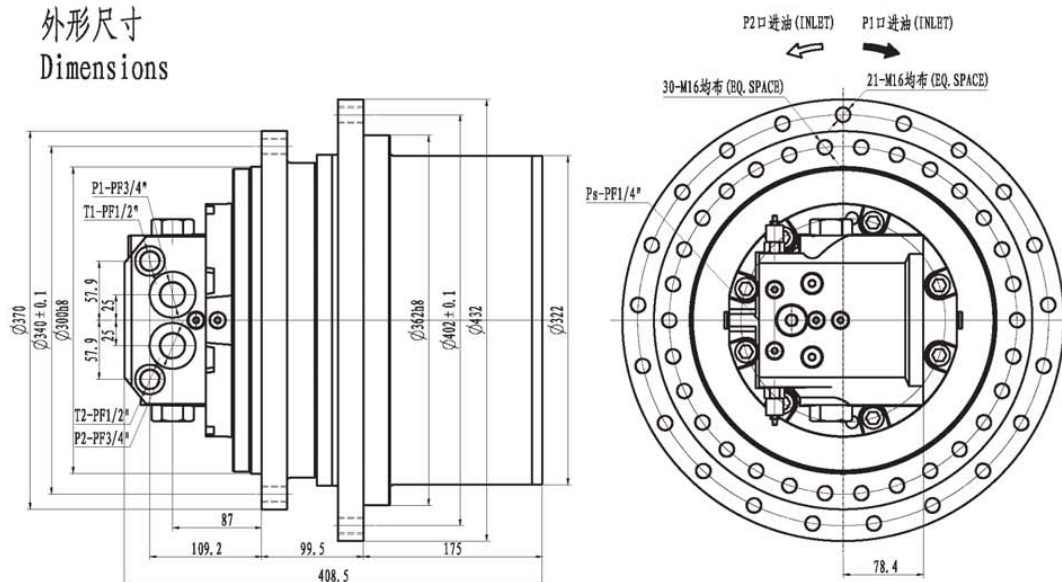
## 技术参数 Specifications

最大输出扭矩 Max. Output Torque N.m	最大总排量 Max. Total Displacement ml/rev	液压马达排量 Motor Displacement ml/rev	传动比 Gear Ratio	最高转速 Max. Speed rpm	最大流量 Max. Flow L/min	最高压力 Max. Pressure MPa	重量 Mass Kg	适用机重 Applicable Vehicle Mass Ton
17700	4416	87.3/55.5 80.3/35.3	47 50.579	55	150	35	155	10~12

## 液压原理图

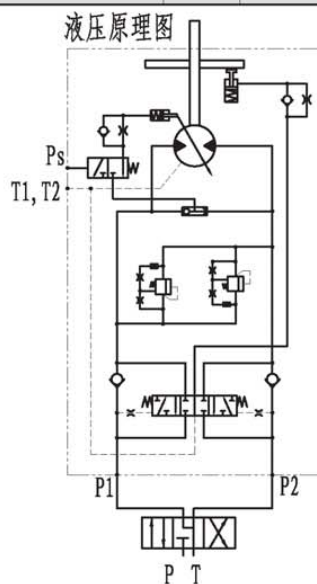


外形尺寸  
Dimensions

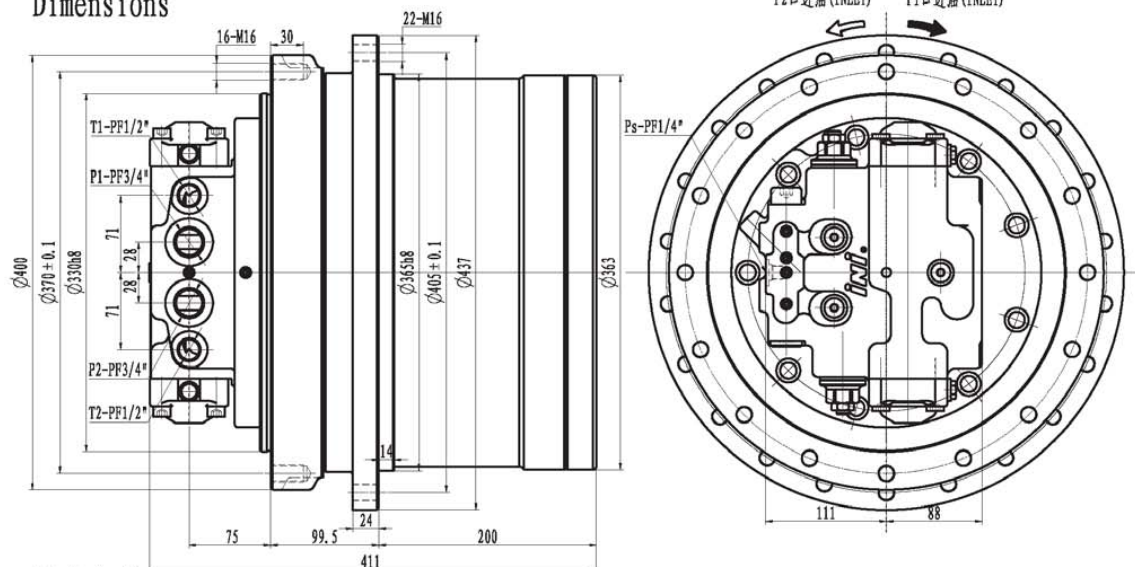


技术参数  
Specifications

最大输出扭矩 Max. Output Torque N.m	最大总排量 Max. Total Displacement ml/rev	液压马达排量 Motor Displacement ml/rev	传动比 Gear Ratio	最高转速 Max. Speed rpm	最大流量 Max. Flow L/min	最高压力 Max. Pressure MPa	重量 Mass Kg	适用机重 Applicable Vehicle Mass Ton
24000	4862.6	87.3/55.5 80.3/35.3	87.3/43.1 69.2/43.1	55.7	50	150	35	180
								14~16



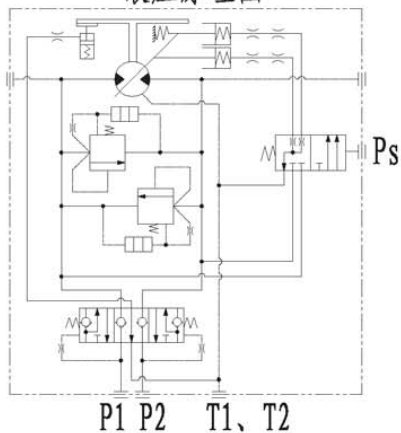
## 外形尺寸 Dimensions



## 技术参数 Specifications

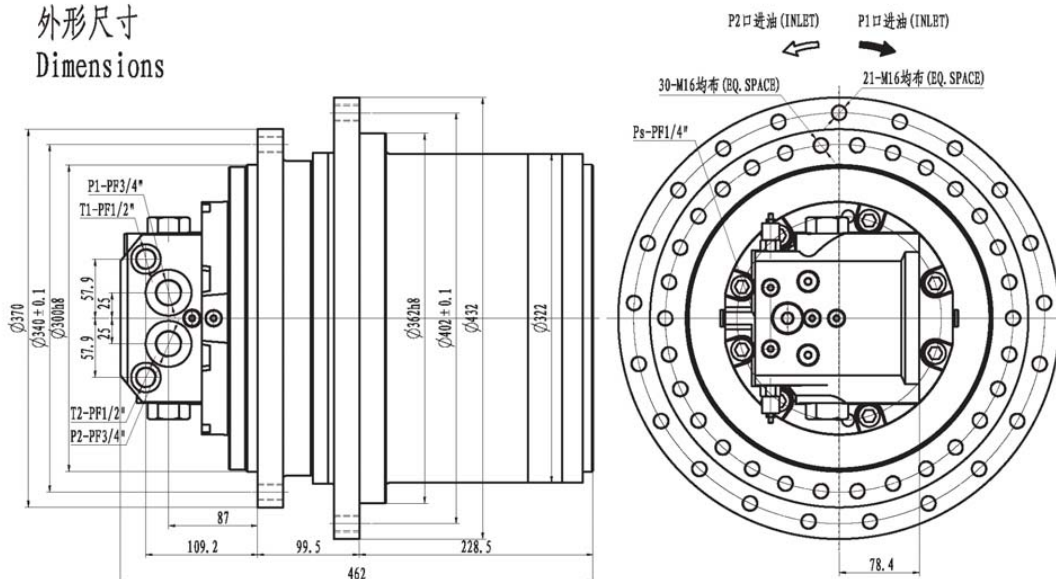
最大输出扭矩 Max. Output Torque N.m	最大总排量 Max. Total Displacement ml/rev	液压马达排量 Motor Displacement ml/rev	传动比 Gear Ratio	最高转速 Max. Speed rpm	最大流量 Max. Flow L/min	最高压力 Max. Pressure MPa	重量 Mass Kg	适用机重 Applicable Vehicle Mass Ton
23500	5020	87.3/55.5 80.3/35.3	47 57.5	50	150	35	190	14~16

## 液压原理图





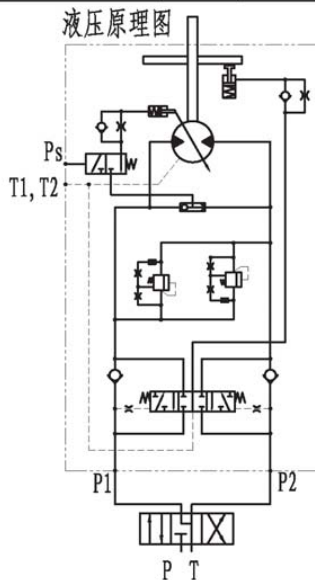
## 外形尺寸 Dimensions



## 技术参数 Specifications

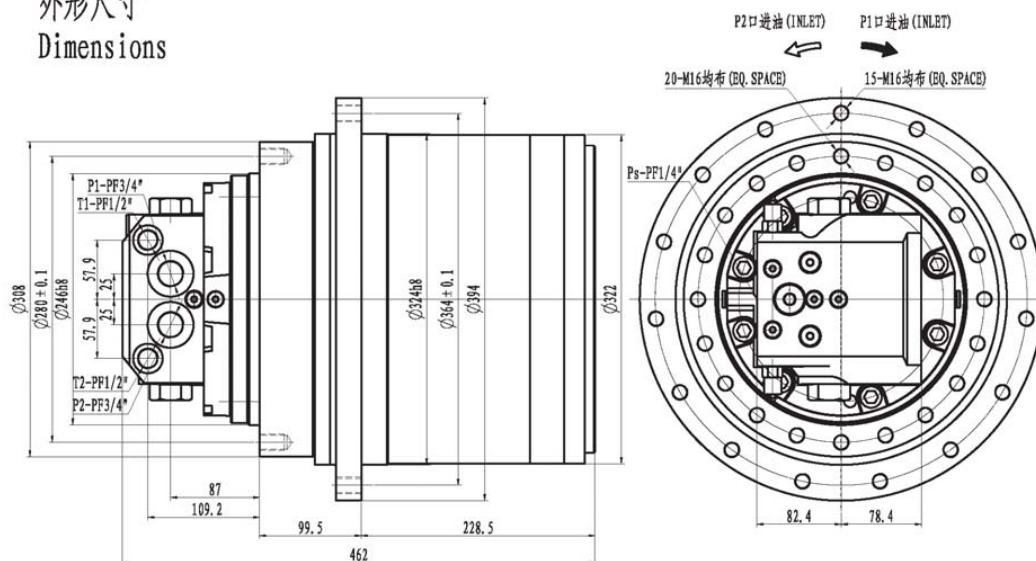
最大输出扭矩 Max. Output Torque N. m	最大总排量 Max. Total Displacement ml/rev	液压马达排量 Motor Displacement ml/rev	传动比 Gear Ratio	最高转速 Max. Speed rpm	最大流量 Max. Flow L/min	最高压力 Max. Pressure MPa	重量 Mass Kg	适用机重 Applicable Vehicle Mass Ton
28000	7158.6	87.3/55.5 80.3/35.3	82	30	150	28	200	14~18
		87.3/43.1 69.2/43.1						

液压原理图





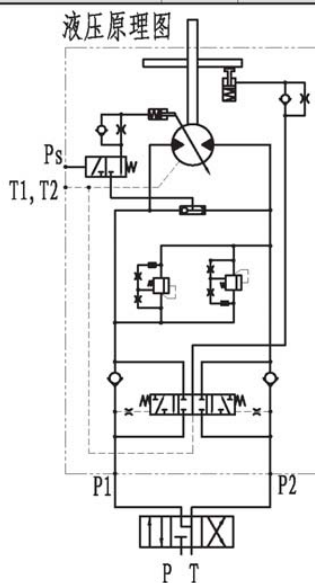
## 外形尺寸 Dimensions



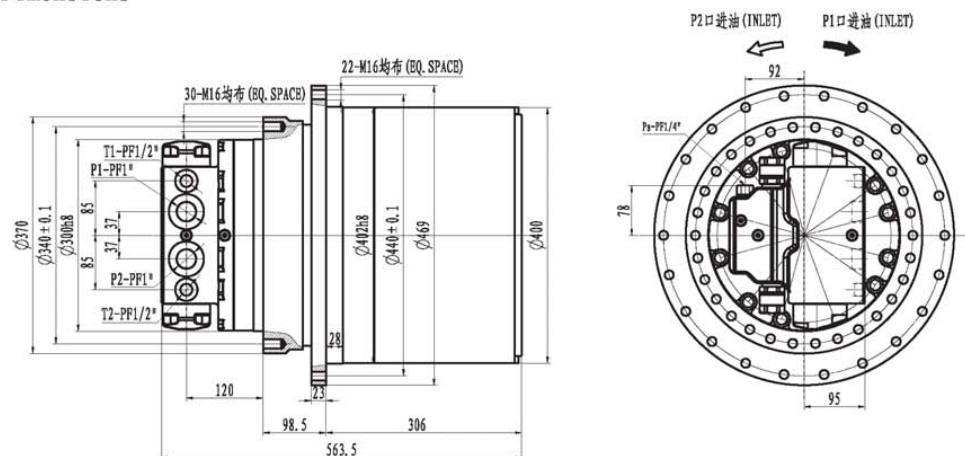
## 技术参数 Specifications

最大输出扭矩 Max. Output Torque N. m	最大总排量 Max. Total Displacement ml/rev	液压马达排量 Motor Displacement ml/rev	传动比 Gear Ratio	最高转速 Max. Speed rpm	最大流量 Max. Flow L/min	最高压力 Max. Pressure MPa	重量 Mass Kg	适用机重 Applicable Vehicle Mass Ton
28000	7158.6	87.3/55.5 80.3/35.3	82	30	150	28	180	14~18

液压原理图



## 外形尺寸 Dimensions



## 技术参数 Specifications

最大输出扭矩 Max. Output Torque	总排量 Total Displacement	液压马达排量 Motor Displacement	传动比 Gear Ratio	转速 Speed	最大流量 Max. Flow	最高压力 Max. Pressure	重量 Mass	适用机重 Applicable Vehicle Mass
N. m	ml/rev	ml/rev		rpm	L/min	MPa	Kg	Ton
40000	7328.7/4319.7	143.7/84.1	51	26/42	250	35	280	20
42000	7721.4/4671.6	151.4/91.6	51	26/42	250	35	280	20-23
44000	8180.4/5110.2	160.4/100.2	51	26/42	250	35	280	20-23
48000	8751.6/5655.9	171.6/110.9	51	26/42	250	35	280	23-25
51000	9389.1/6262.8	184.1/122.8	51	26/42	250	35	280	25-30
54000	9919.5/6767.7	194.5/132.7	51	26/42	250	35	280	30-35

## 液压原理图

