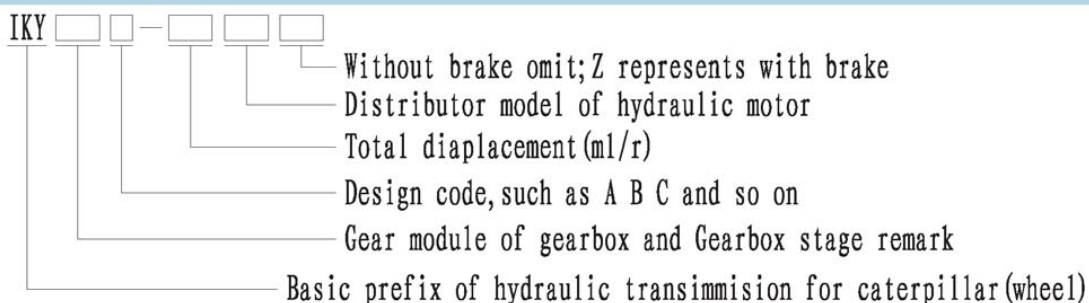


## IKY Series Hydraulic Transmission For Caterpillar(Wheel)

### 1、Brief introduction

IKY series hydraulic transmission for caterpillar(whell) consist of a variety of valve block with the function of brake,hydraulic motor,one or two level planetary gearbox. a number of excellent features distinguish from other similar products in disgn:high efficiency of startup and operation,high reliability,the revolved casing as output can directly connect with the chain wheel of caterpillar drive.Due to the small axial dimension,the hydraulic transimission can be set inside of wheel or caterpillar. They not only improve the trafficability of the motion machine,but also make the figure compact and elegant. So they have been widely applied in construction vehicle,track wheel,caterpillar excavator,caterpillar motion drive mechanism of a variety of drillers and caterpillar mining machine.

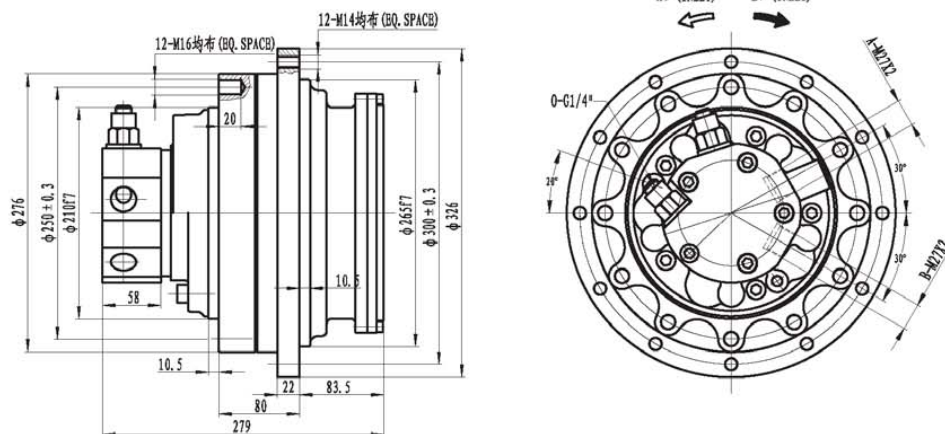
### 2、Model options



### 3、Options example

IKY34A-6500D240201Z represents that planetary gearbox have two stage,the 1st stage gear module is 3mm and the 2nd stage is 4mm,the serial label is A,nominal total displacement is 6500 cc/rev and distributor model is D240201 with brake.

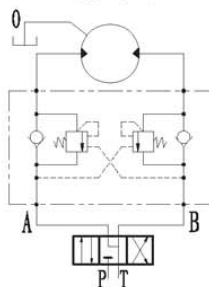
## 外形尺寸 Dimensions



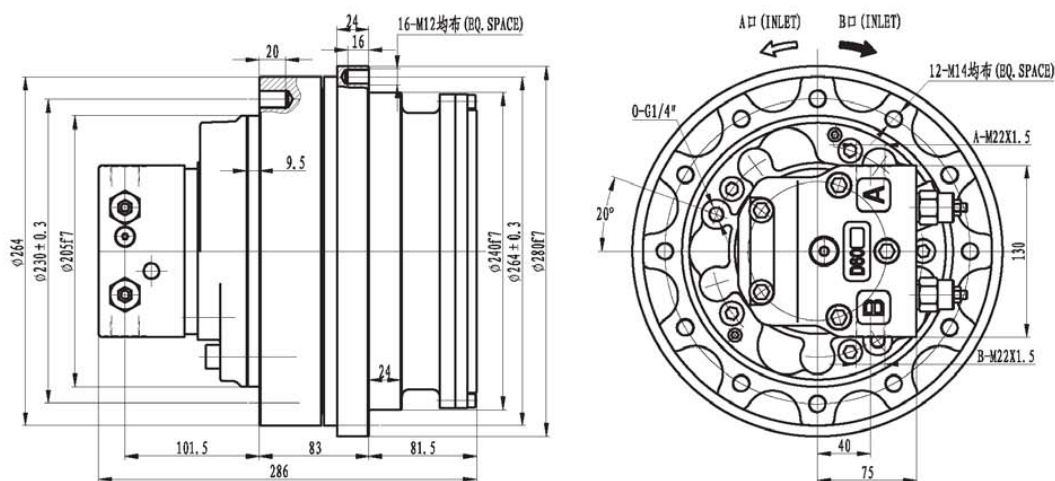
## 技术参数 Specifications

| 型号<br>Model       | 最大输出扭矩 (N·m)<br>Max. Output Torque | 转速 (rpm)<br>Speed | 传动比<br>Ratio | 最高压力 (MPa)<br>Max. Pressure | 总排量 (ml/r)<br>Total Displacement | 液压马达<br>Hydraulic Motor<br>型号 排量 (ml/r)<br>Model Displacement | 重量 (Kg)<br>Mass | 适用机重 (ton)<br>Applicable Vehicle Mass |
|-------------------|------------------------------------|-------------------|--------------|-----------------------------|----------------------------------|---|-----------------|---------------------------------------|
| IKY2.5B-1200D1202 | 3100                               | 1~90              | 6            | 20                          | 1146                             | INM05-200D1202 191  | 55              | 3.5                                   |
| IKY2.5B-1000D1202 | 2670                               | 1~90              | 6            | 20                          | 996                              | INM05-170D1202 166  | 55              | 3                                     |
| IKY2.5B-900D1202  | 2430                               | 1~100             | 6            | 20                          | 906                              | INM05-150D1202 151  | 55              | 3                                     |
| IKY2.5B-800D1202  | 2080                               | 1~100             | 6            | 20                          | 774                              | INM05-130D1202 129  | 55              | 2.5                                   |
| IKY2.5B-700D1202  | 1850                               | 1~100             | 6            | 20                          | 690                              | INM05-110D1202 115  | 55              | 2.5                                   |
| IKY2.5B-520D1202  | 1380                               | 1~110             | 6            | 20                          | 516                              | INM05-90D1202 86  | 55              | 1~2                                   |
| IKY2.5B-450D1202  | 1190                               | 1~110             | 6            | 20                          | 444                              | INM05-75D1202 74  | 55              | 1~2                                   |
| IKY2.5B-570D1202  | 1550                               | 1~200             | 3            | 20                          | 573                              | INM05-200D1202 191  | 60              | 1~2                                   |
| IKY2.5B-500D1202  | 1335                               | 1~200             | 3            | 20                          | 498                              | INM05-170D1202 166  | 60              | 1~2                                   |
| IKY2.5B-450D1202  | 1215                               | 1~210             | 3            | 20                          | 453                              | INM05-150D1202 151  | 60              | 1~2                                   |
| IKY2.5B-390D1202  | 1040                               | 1~210             | 3            | 20                          | 387                              | INM05-130D1202 129  | 60              | 1~2                                   |

液压原理图



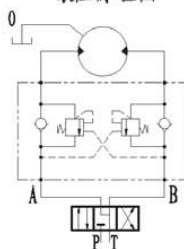
## 外形尺寸 Dimensions



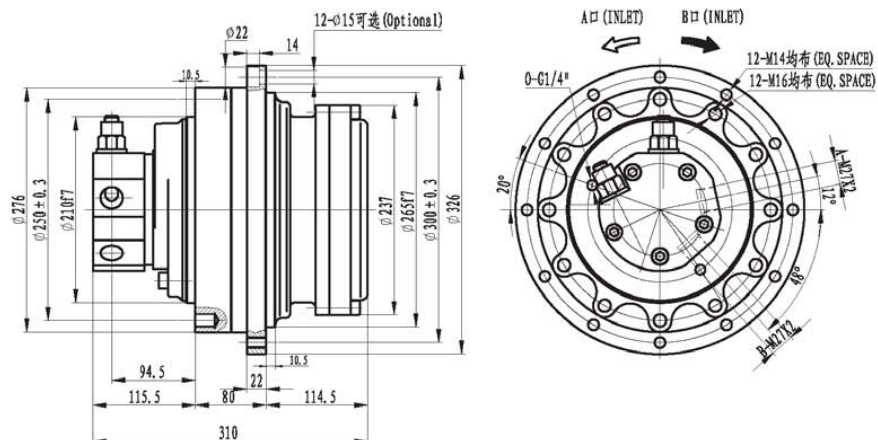
## 技术参数 Specifications

| 型号<br>Model       | 最大输出扭矩 (N·m)<br>Max. Output Torque | 转速 (rpm)<br>Speed | 传动比<br>Ratio | 最高压力 (MPa)<br>Max. Pressure | 总排量 (ml/r)<br>Total Displacement | 液压马达<br>Hydraulic Motor<br>型号 排量 (ml/r)<br>Model Displacement | 重量 (Kg)<br>Mass | 适用机重 (ton)<br>Applicable Vehicle Mass |
|-------------------|------------------------------------|-------------------|--------------|-----------------------------|----------------------------------|---|-----------------|---------------------------------------|
| IKY2.5B-1200D1202 | 3100                               | 1-90              | 6            | 20                          | 1146                             | INM05-200D1202 191  | 55              | 3.5                                   |
| IKY2.5B-1000D1202 | 2670                               | 1-90              | 6            | 20                          | 996                              | INM05-170D1202 166  | 55              | 3                                     |
| IKY2.5B-900D1202  | 2430                               | 1-100             | 6            | 20                          | 906                              | INM05-150D1202 151  | 55              | 3                                     |
| IKY2.5B-800D1202  | 2080                               | 1-100             | 6            | 20                          | 774                              | INM05-130D1202 129  | 55              | 2.5                                   |
| IKY2.5B-700D1202  | 1850                               | 1-100             | 6            | 20                          | 690                              | INM05-110D1202 115  | 55              | 2.5                                   |
| IKY2.5B-520D1202  | 1380                               | 1-110             | 6            | 20                          | 516                              | INM05-90D1202 86  | 55              | 1~2                                   |
| IKY2.5B-450D1202  | 1190                               | 1-110             | 6            | 20                          | 444                              | INM05-75D1202 74  | 55              | 1~2                                   |
| IKY2.5B-570D1202  | 1550                               | 1-200             | 3            | 20                          | 573                              | INM05-200D1202 191  | 60              | 1~2                                   |
| IKY2.5B-500D1202  | 1335                               | 1-200             | 3            | 20                          | 498                              | INM05-170D1202 166  | 60              | 1~2                                   |
| IKY2.5B-450D1202  | 1215                               | 1-210             | 3            | 20                          | 453                              | INM05-150D1202 151  | 60              | 1~2                                   |
| IKY2.5B-390D1202  | 1040                               | 1-210             | 3            | 20                          | 387                              | INM05-130D1202 129  | 60              | 1~2                                   |

## 液压原理图



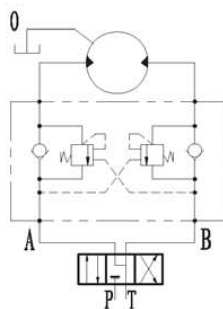
## 外形尺寸 Dimensions



## 技术参数 Specifications

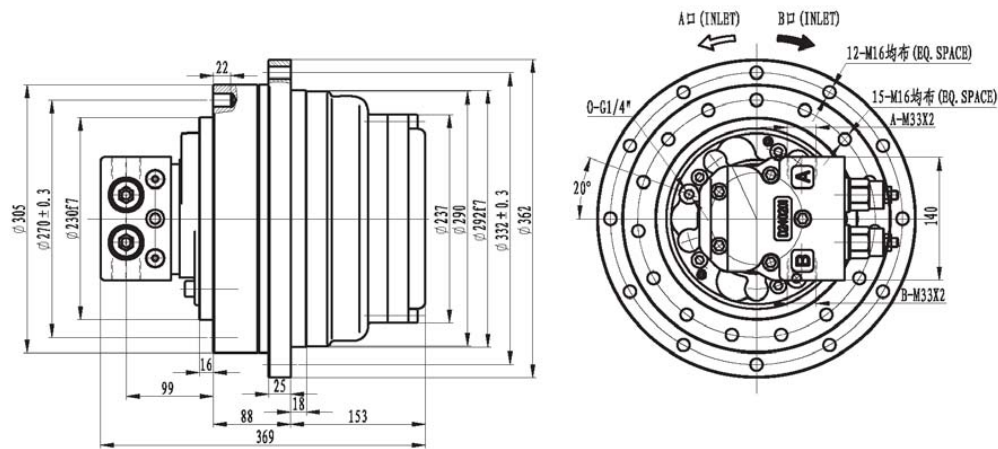
| 型号<br>Model          | 最大输出扭矩 (N·m)<br>Max. Output Torque | 转速 (rpm)<br>Speed | 传动比<br>Ratio | 最高压力 (MPa)<br>Max. Pressure | 总排量 (ml/r)<br>Total Displacement | 液压马达<br>Hydraulic Motor |                           | 重量 (kg)<br>Mass | 适用机重 (ton)<br>Applicable Vehicle Mass |
|----------------------|------------------------------------|-------------------|--------------|-----------------------------|----------------------------------|-------------------------|---------------------------|-----------------|---------------------------------------|
|                      |                                    |                   |              |                             |                                  | 型号<br>Model             | 排量 (ml/r)<br>Displacement |                 |                                       |
| IKY2.52.5A-3600D1202 | 8000                               | 0.4-32            | 19           | 18                          | 3629                             | INM05-200D1202          | 191                       | 80              | 7~8                                   |
| IKY2.52.5A-3200D1202 | 8000                               | 0.4-38            | 19           | 20                          | 3154                             | INM05-170D1202          | 166                       | 80              | 7~8                                   |
| IKY2.52.5A-2900D1202 | 7300                               | 0.4-42            | 19           | 20                          | 2869                             | INM05-150D1202          | 151                       | 80              | 6~7                                   |
| IKY2.52.5A-2500D1202 | 6300                               | 0.4-46            | 19           | 20                          | 2451                             | INM05-130D1202          | 129                       | 80              | 5~6                                   |
| IKY2.52.5A-2200D1202 | 5600                               | 0.4-50            | 19           | 20                          | 2185                             | INM05-110D1202          | 115                       | 80              | 5~6                                   |
| IKY2.52.5A-1600D1202 | 4200                               | 0.4-58            | 19           | 20                          | 1634                             | INM05-90D1202           | 86                        | 80              | 4~5                                   |
| IKY2.52.5A-1400D1202 | 3600                               | 0.4-63            | 19           | 20                          | 1406                             | INM05-75D1202           | 74                        | 80              | 4~5                                   |

## 液压原理图



外形尺寸

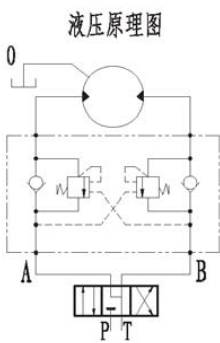
Dimensions



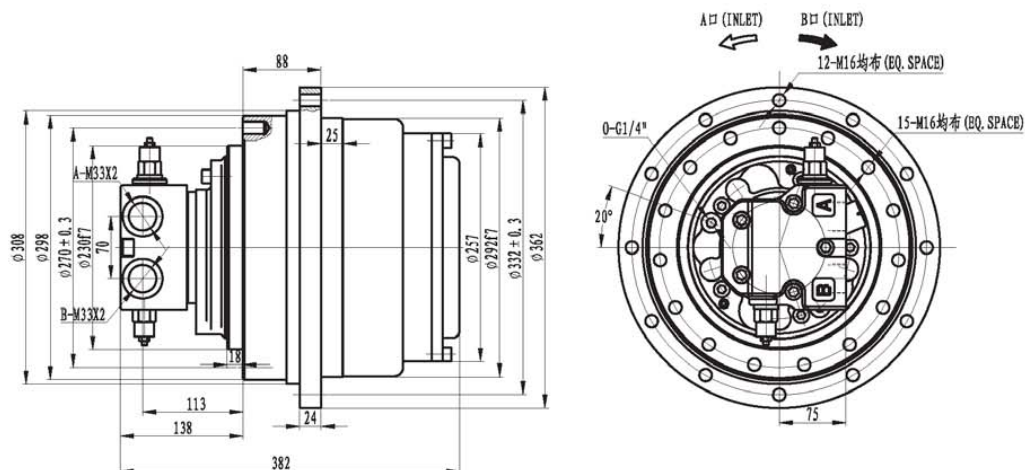
技术参数

Specifications

| 型号<br>Model          | 最大输出扭矩(N·m)<br>Max. Output Torque | 转速<br>(rpm)<br>Speed | 传动比<br>Ratio | 最高压力(MPa)<br>Max. Pressure | 总排量<br>(ml/r)<br>Total Displacement | 液压马达<br>Hydraulic Motor |                          | 重量(kg)<br>Mass | 适用机重(ton)<br>Applicable Vehicle Mass |
|----------------------|-----------------------------------|----------------------|--------------|----------------------------|-------------------------------------|-------------------------|--------------------------|----------------|--------------------------------------|
|                      |                                   |                      |              |                            |                                     | 型号<br>Model             | 排量(ml/r)<br>Displacement |                |                                      |
| IKY2.52.5B-4600D2402 | 9600                              | 0.25-32              | 24           | 17                         | 4584                                | INM05-200D2402          | 191                      | 100            | 8-10                                 |
| IKY2.52.5B-4000D2402 | 9600                              | 0.25-33              | 24           | 19                         | 3984                                | INM05-170D2402          | 166                      | 100            | 8-10                                 |
| IKY2.52.5B-3600D2402 | 9600                              | 0.25-36              | 24           | 20                         | 3624                                | INM05-150D2402          | 151                      | 100            | 8-10                                 |
| IKY2.52.5B-3100D2402 | 9500                              | 0.25-42              | 24           | 23                         | 3096                                | INM05-130D2402          | 129                      | 100            | 8-10                                 |
| IKY2.52.5B-2800D2402 | 8470                              | 0.25-45              | 24           | 23                         | 2760                                | INM05-110D2402          | 115                      | 100            | 8-10                                 |
| IKY2.52.5B-2100D2402 | 6330                              | 0.25-50              | 24           | 23                         | 2064                                | INM05-90D2402           | 86                       | 100            | 8-10                                 |



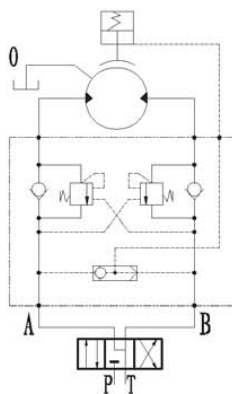
## 外形尺寸 Dimensions



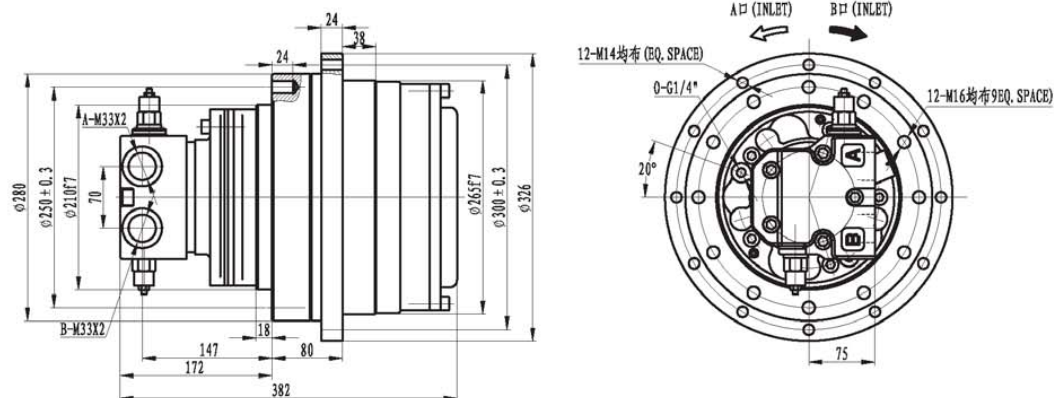
## 技术参数 Specifications

| 型号<br>Model           | 最大输出扭矩 (N·m)<br>Max. Output Torque | 转速<br>(rpm)<br>Speed | 传动比<br>Ratio | 最高压力 (MPa)<br>Max. Pressure | 总排量<br>(ml/r)<br>Total Displacement | 液压马达<br>Hydraulic Motor            | 重量 (kg)<br>Mass | 适用起重 (ton)<br>Applicable Vehicle Mass |
|-----------------------|------------------------------------|----------------------|--------------|-----------------------------|-------------------------------------|------------------------------------|-----------------|---------------------------------------|
|                       |                                    |                      |              |                             |                                     | 型号 排量 (ml/r)<br>Model Displacement |                 |                                       |
| IKY2.53A-3600D240201Z | 10000                              | 0.3-36               | 19           | 21                          | 3629                                | INM05-200D240201 191               | 110             | 8~10                                  |
| IKY2.53A-3200D240201Z | 8700                               | 0.3-40               | 19           | 21                          | 3154                                | INM05-170D240201 166               | 110             | 8~10                                  |
| IKY2.53A-2900D240201Z | 8500                               | 0.3-45               | 19           | 23                          | 2869                                | INM05-150D240201 151               | 110             | 6~8                                   |
| IKY2.53A-2500D240201Z | 7260                               | 0.3-50               | 19           | 23                          | 2451                                | INM05-130D240201 129               | 110             | 6~8                                   |
| IKY2.53A-2200D240201Z | 6470                               | 0.3-55               | 19           | 23                          | 2185                                | INM05-110D240201 115               | 110             | 6~8                                   |

## 液压原理图



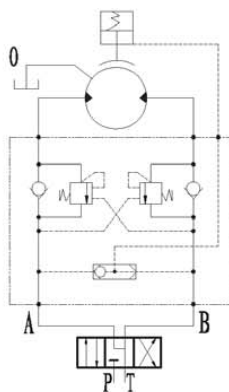
## 外形尺寸 Dimensions



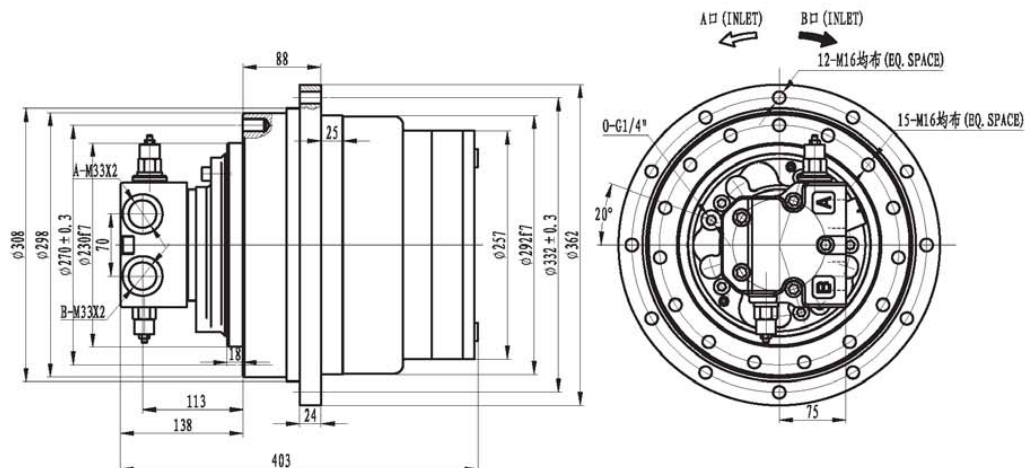
## 技术参数 Specifications

| 型号<br>Model           | 最大输出扭矩 (N·m)<br>Max. Output Torque | 转速<br>(rpm)<br>Speed | 传动比<br>Ratio | 最高压力 (MPa)<br>Max. Pressure | 总排量<br>(ml/r)<br>Total Displacement | 液压马达<br>Hydraulic Motor |                           | 重量 (Kg)<br>Mass | 适用机重 (ton)<br>Applicable Vehicle Mass |
|-----------------------|------------------------------------|----------------------|--------------|-----------------------------|-------------------------------------|-------------------------|---------------------------|-----------------|---------------------------------------|
|                       |                                    |                      |              |                             |                                     | 型号<br>Model             | 排量 (ml/r)<br>Displacement |                 |                                       |
| IKY2.53B-2900D240201Z | 8500                               | 0.3-42               | 19           | 23                          | 2869                                | INW05-150D240201        | 151                       | 100             | 6-8                                   |
| IKY2.53B-2500D240201Z | 7260                               | 0.3-48               | 19           | 23                          | 2451                                | INW05-130D240201        | 129                       | 100             | 6-8                                   |
| IKY2.53B-2200D240201Z | 6470                               | 0.3-55               | 19           | 23                          | 2185                                | INW05-110D240201        | 115                       | 100             | 6-8                                   |
| IKY2.53B-1600D240201Z | 4840                               | 0.3-58               | 19           | 23                          | 1634                                | INW05-90D240201         | 86                        | 100             | 6-8                                   |
| IKY2.53B-1400D240201Z | 4160                               | 0.3-63               | 19           | 23                          | 1406                                | INW05-75D240201         | 74                        | 100             | 6-8                                   |

## 液压原理图



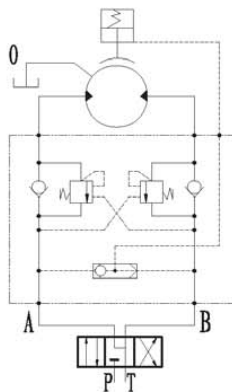
## 外形尺寸 Dimensions



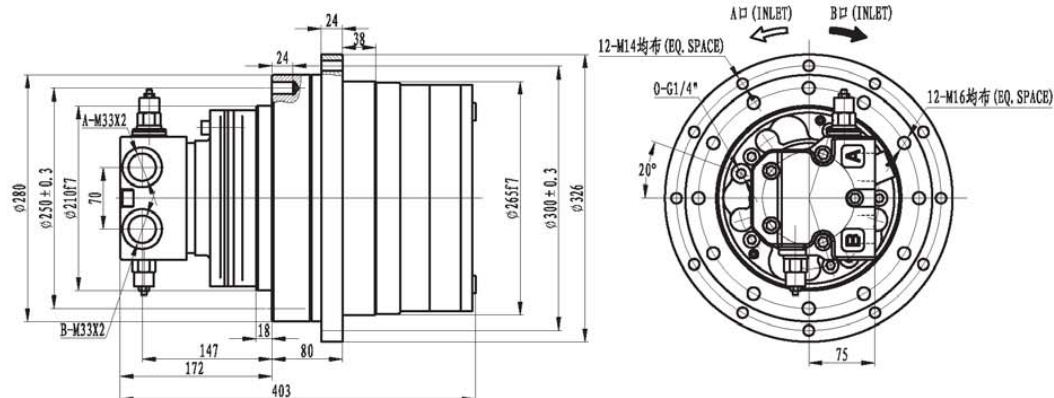
## 技术参数 Specifications

| 型号<br>Model         | 最大输出扭矩 (N·m)<br>Max. Output Torque | 转速<br>(rpm)<br>Speed | 传动比<br>Ratio | 最高压力 (MPa)<br>Max. Pressure | 总排量<br>(ml/r)<br>Total Displacement | 液压马达<br>Hydraulic Motor |                           | 重量 (Kg)<br>Mass | 适用起重 (ton)<br>Applicable Vehicle Mass |
|---------------------|------------------------------------|----------------------|--------------|-----------------------------|-------------------------------------|-------------------------|---------------------------|-----------------|---------------------------------------|
|                     |                                    |                      |              |                             |                                     | 型号<br>Model             | 排量 (ml/r)<br>Displacement |                 |                                       |
| IKY33A-3600D240201Z | 10000                              | 0.3-36               | 19           | 21                          | 3629                                | INW05-200D240201        | 191                       | 110             | 8~10                                  |
| IKY33A-3200D240201Z | 8700                               | 0.3-40               | 19           | 21                          | 3154                                | INW05-170D240201        | 166                       | 110             | 8~10                                  |
| IKY33A-2900D240201Z | 8500                               | 0.3-45               | 19           | 23                          | 2869                                | INW05-150D240201        | 151                       | 110             | 6~8                                   |
| IKY33A-2500D240201Z | 7260                               | 0.3-50               | 19           | 23                          | 2451                                | INW05-130D240201        | 129                       | 110             | 6~8                                   |
| IKY33A-2200D240201Z | 6470                               | 0.3-55               | 19           | 23                          | 2185                                | INW05-110D240201        | 115                       | 110             | 6~8                                   |

## 液压原理图



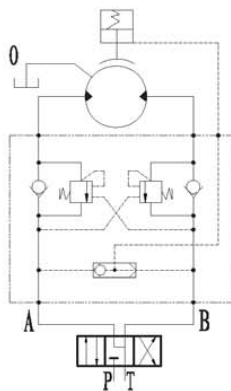
## 外形尺寸 Dimensions



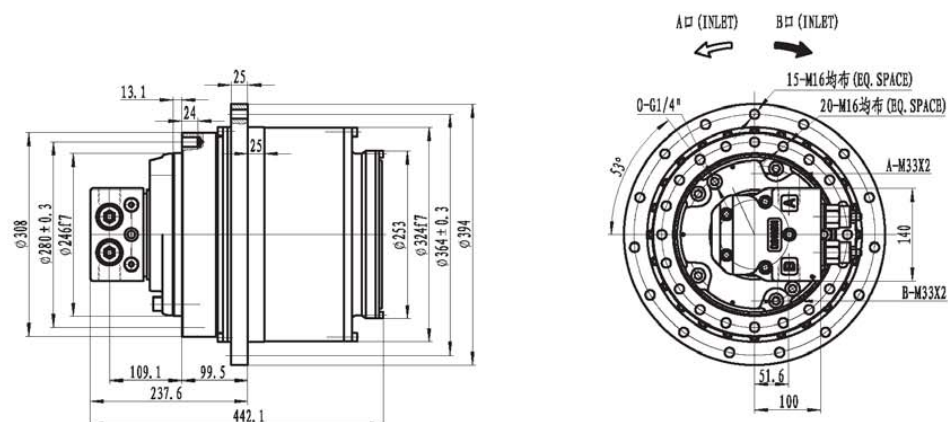
## 技术参数 Specifications

| 型号<br>Model         | 最大输出扭矩 (N·m)<br>Max. Output Torque | 转速 (rpm)<br>Speed | 传动比<br>Ratio | 最高压力 (MPa)<br>Max. Pressure | 总排量 (ml/r)<br>Total Displacement | 液压马达<br>Hydraulic Motor<br>型号<br>Model | 排量 (ml/r)<br>Displacement | 重量 (Kg)<br>Mass | 适用机重 (ton)<br>Applicable Vehicle Mass |
|---------------------|------------------------------------|-------------------|--------------|-----------------------------|----------------------------------|--|---------------------------|-----------------|---------------------------------------|
| IKY33B-2900D240201Z | 8500                               | 0.3-42            | 19           | 23                          | 2869                             | INW05-150D240201                       | 151                       | 100             | 6-8                                   |
| IKY33B-2500D240201Z | 7260                               | 0.3-48            | 19           | 23                          | 2451                             | INW05-130D240201                       | 129                       | 100             | 6-8                                   |
| IKY33B-2200D240201Z | 6470                               | 0.3-55            | 19           | 23                          | 2185                             | INW05-110D240201                       | 115                       | 100             | 6-8                                   |
| IKY33B-1600D240201Z | 4840                               | 0.3-58            | 19           | 23                          | 1634                             | INW05-90D240201                        | 86                        | 100             | 6-8                                   |
| IKY33B-1400D240201Z | 4160                               | 0.3-63            | 19           | 23                          | 1406                             | INW05-75D240201                        | 74                        | 100             | 6-8                                   |

## 液压原理图



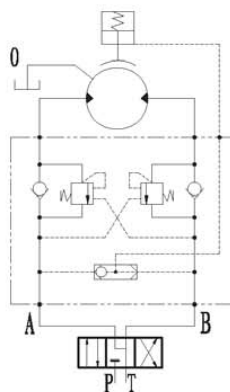
## 外形尺寸 Dimensions



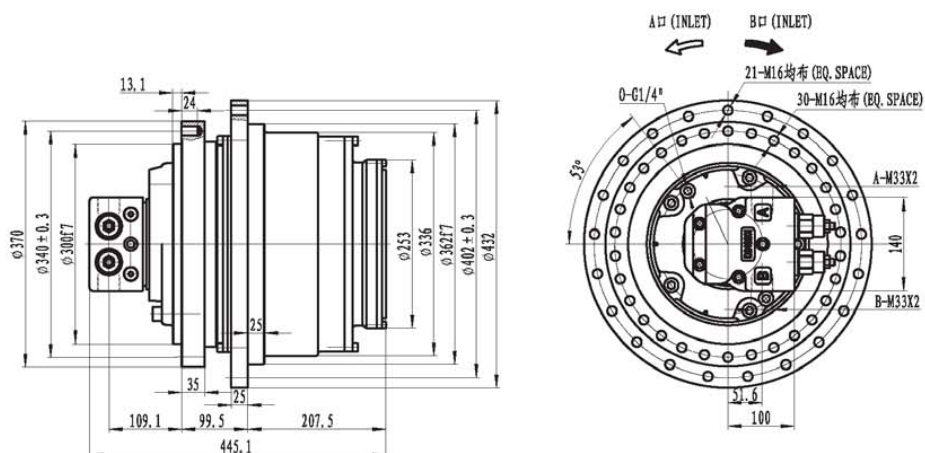
## 技术参数 Specifications

| 型号                  | 最大输出扭矩 (N·m)       | 转速 (rpm) | 传动比   | 最高压力 (MPa)    | 总排量 (ml/r)         | 液压马达            |                           | 重量 (Kg) | 适用机重 (ton)              |
|---------------------|--------------------|----------|-------|---------------|--------------------|-----------------|---------------------------|---------|-------------------------|
|                     |                    |          |       |               |                    | Hydraulic Motor |                           |         |                         |
| Model               | Max. Output Torque | Speed    | Ratio | Max. Pressure | Total Displacement | 型号<br>Model     | 排量 (ml/r)<br>Displacement | Mass    | Applicable Vehicle Mass |
| IKY34A-7500D240201Z | 23000              | 0.2-29   | 37.5  | 23.5          | 7537.5             | IKM1-200D240201 | 201                       | 200     | 14~18                   |
| IKY34A-6500D240201Z | 19700              | 0.2-30   | 37.5  | 23.5          | 6450               | IKM1-175D240201 | 172                       | 200     | 12~14                   |
| IKY34A-5800D240201Z | 17700              | 0.2-32   | 37.5  | 23.5          | 5775               | IKM1-150D240201 | 154                       | 200     | 10~12                   |
| IKY34A-3700D240201Z | 11400              | 0.2-32   | 37.5  | 23.5          | 3712.5             | IKM1-100D240201 | 99                        | 200     | 8~10                    |
| IKY34A-5300D240201Z | 16300              | 0.2-40   | 26.5  | 23.5          | 5326.5             | IKM1-200D240201 | 201                       | 210     | 12~14                   |
| IKY34A-4400D240201Z | 13600              | 0.2-42   | 26.5  | 23.5          | 4458               | IKM1-175D240201 | 172                       | 210     | 10~12                   |
| IKY34A-4100D240201Z | 12500              | 0.2-45   | 26.5  | 23.5          | 4081               | IKM1-150D240201 | 154                       | 210     | 8~10                    |

### 液压原理图



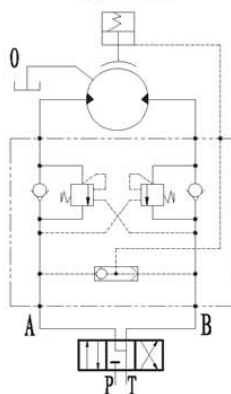
## 外形尺寸 Dimensions



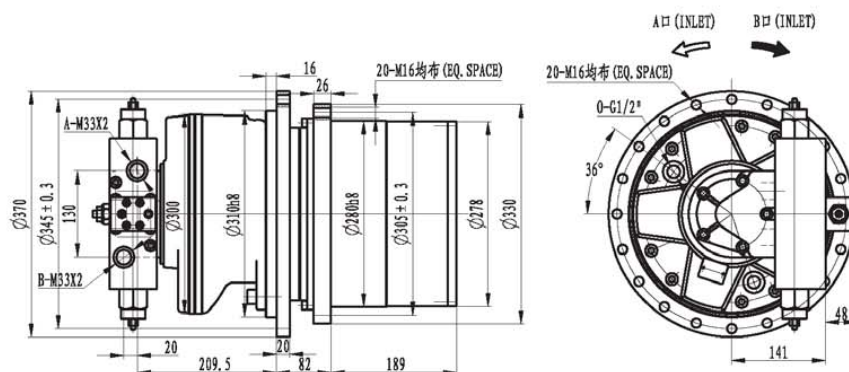
## 技术参数 Specifications

| 型号<br>Model         | 最大输出扭矩 (N·m)<br>Max. Output Torque | 转速<br>(rpm)<br>Speed | 传动比<br>Ratio | 最高压力 (MPa)<br>Max. Pressure | 总排量<br>(ml/r)<br>Total Displacement | 液压马达<br>Hydraulic Motor |                           | 重量 (Kg)<br>Mass | 适用机重 (ton)<br>Applicable Vehicle Mass |
|---------------------|------------------------------------|----------------------|--------------|-----------------------------|-------------------------------------|-------------------------|---------------------------|-----------------|---------------------------------------|
|                     |                                    |                      |              |                             |                                     | 型号<br>Model             | 排量 (ml/r)<br>Displacement |                 |                                       |
| IKY34B-7500D240201Z | 23000                              | 0.2-29               | 37.5         | 23.5                        | 7537.5                              | INM1-200D240201         | 201                       | 240             | 14~18                                 |
| IKY34B-6500D240201Z | 19700                              | 0.2-30               | 37.5         | 23.5                        | 6450                                | INM1-175D240201         | 172                       | 240             | 12~14                                 |
| IKY34B-5800D240201Z | 17700                              | 0.2-32               | 37.5         | 23.5                        | 5775                                | INM1-150D240201         | 154                       | 240             | 10~12                                 |
| IKY34B-3700D240201Z | 11400                              | 0.2-32               | 37.5         | 23.5                        | 3712.5                              | INM1-100D240201         | 99                        | 240             | 8~10                                  |
| IKY34B-5300D240201Z | 16300                              | 0.2-40               | 26.5         | 23.5                        | 5326.5                              | INM1-200D240201         | 201                       | 250             | 12~14                                 |
| IKY34B-4400D240201Z | 13600                              | 0.2-42               | 26.5         | 23.5                        | 4458                                | INM1-175D240201         | 172                       | 250             | 10~12                                 |
| IKY34B-4100D240201Z | 12500                              | 0.2-45               | 26.5         | 23.5                        | 4081                                | INM1-150D240201         | 154                       | 250             | 8~10                                  |

## 液压原理图



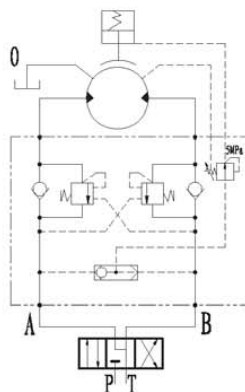
## 外形尺寸 Dimensions



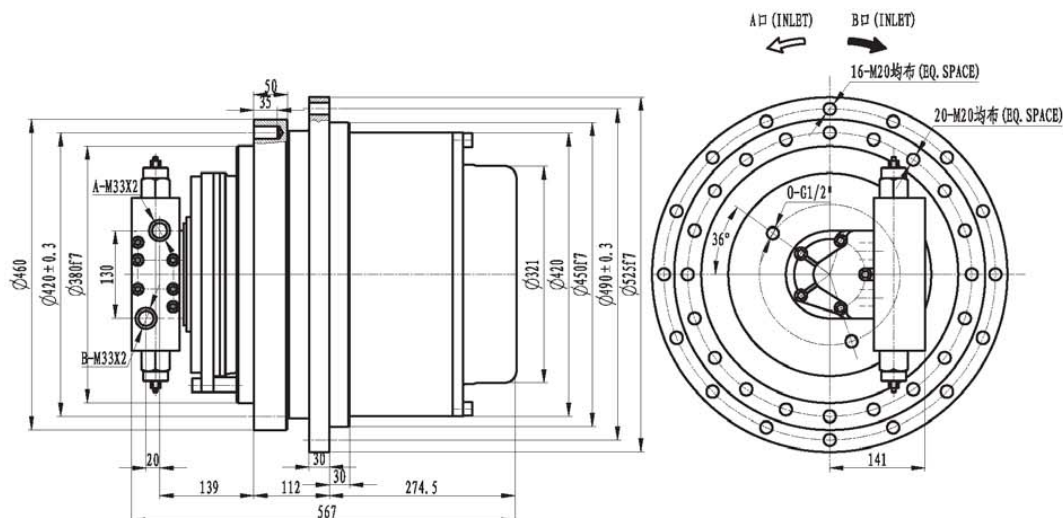
## 技术参数 Specifications

| 型号<br>Model             | 最大输出扭矩 (N·m)<br>Max. Output Torque | 转速<br>(rpm)<br>Speed | 传动比<br>Ratio | 最高压力 (MPa)<br>Max. Pressure | 总排量<br>(ml/r)<br>Total Displacement | 液压马达<br>Hydraulic Motor |                           | 重量 (Kg)<br>Mass | 适用机重 (ton)<br>Applicable Vehicle Mass |
|-------------------------|------------------------------------|----------------------|--------------|-----------------------------|-------------------------------------|-------------------------|---------------------------|-----------------|---------------------------------------|
|                         |                                    |                      |              |                             |                                     | 型号<br>Model             | 排量 (ml/r)<br>Displacement |                 |                                       |
| IKY44A-9600D47F2402011Z | 24000                              | 0.1-30               | 19.4         | 20                          | 9564.2                              | INM2-500D47F2402011     | 493                       | 200             | 16 ~ 18                               |
| IKY44A-8300D47F2402011Z | 21000                              | 0.1-30               | 19.4         | 20                          | 8245                                | INM2-420D47F2402011     | 425                       | 200             | 14 ~ 16                               |
| IKY44A-6800D47F2402011Z | 17000                              | 0.1-30               | 19.4         | 20                          | 6731.8                              | INM2-350D47F2402011     | 347                       | 200             | 12 ~ 14                               |

液压原理图



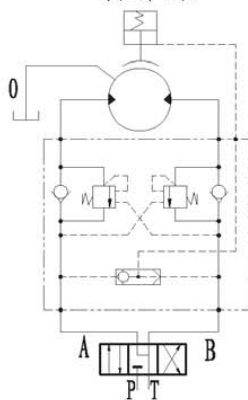
## 外形尺寸 Dimensions



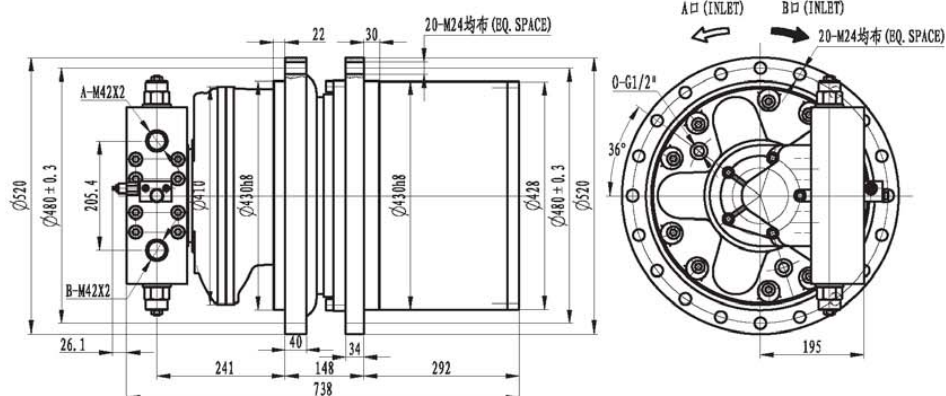
## 技术参数 Specifications

| 型号<br>Model             | 最大输出扭矩 (N·m)<br>Max. Output Torque | 转速 (rpm)<br>Speed | 传动比<br>Ratio | 最高压力 (MPa)<br>Max. Pressure | 总排量 (ml/r)<br>Total Displacement | 液压马达<br>Hydraulic Motor |                           | 重量 (Kg)<br>Mass | 适用机重 (ton)<br>Applicable Vehicle Mass |
|-------------------------|------------------------------------|-------------------|--------------|-----------------------------|----------------------------------|-------------------------|---------------------------|-----------------|---------------------------------------|
|                         |                                    |                   |              |                             |                                  | 型号<br>Model             | 排量 (ml/r)<br>Displacement |                 |                                       |
| IKY45A-16000D47F240201Z | 48000                              | 0.2 - 15          | 37.5         | 23                          | 15937.5                          | TNM2-420D47F240201      | 425                       | 240             | 24 ~ 30                               |
| IKY45A-13000D47F240201Z | 39000                              | 0.2 - 19          | 37.5         | 23                          | 13012.5                          | TNM2-350D47F240201      | 347                       | 240             | 20 ~ 24                               |
| IKY45A-11500D47F240201Z | 34000                              | 0.2 - 21          | 37.5         | 23                          | 11400                            | TNM2-300D47F240201      | 304                       | 240             | 18 ~ 24                               |
| IKY45A-9500D47F240201Z  | 28000                              | 0.2 - 26          | 37.5         | 23                          | 9412.5                           | TNM2-250D47F240201      | 251                       | 240             | 16 ~ 18                               |

## 液压原理图



## 外形尺寸 Dimensions



## 技术参数 Specifications

| 型号<br>Model              | 最大输出扭矩 (N·m)<br>Max. Output Torque | 转速<br>(rpm)<br>Speed | 传动比<br>Ratio | 最高压力 (MPa)<br>Max. Pressure | 总排量<br>(ml/r)<br>Total Displacement | 液压马达<br>Hydraulic Motor |                           | 重量 (Kg)<br>Mass | 适用机重 (ton)<br>Applicable Vehicle Mass |
|--------------------------|------------------------------------|----------------------|--------------|-----------------------------|-------------------------------------|-------------------------|---------------------------|-----------------|---------------------------------------|
|                          |                                    |                      |              |                             |                                     | 型号<br>Model             | 排量 (ml/r)<br>Displacement |                 |                                       |
| IKY66A-26000D90F4802011Z | 80000                              | 0.1-11               | 19.4         | 24                          | 25530.4                             | TM4-1300D90F4802011     | 1316                      | 425             | 50                                    |
| IKY66A-25000D90F4802011Z | 75000                              | 0.1-12               | 19.4         | 24                          | 24191.8                             | TM4-1200D90F4802011     | 1250                      | 425             | 45                                    |
| IKY66A-22000D90F4802011Z | 67000                              | 0.1-14               | 19.4         | 24                          | 21650.4                             | TM4-1100D90F4802011     | 1100                      | 425             | 40                                    |

## 液压原理图

