

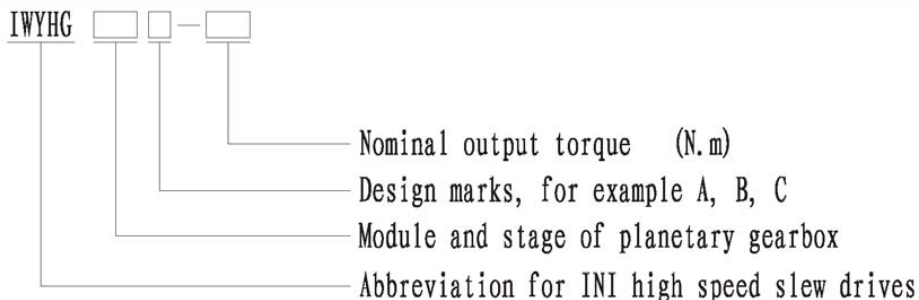
IWYHG high speed hydraulic slewing drives series

1. brief introduction :

IWYHG high speed hydraulic slewing drives series are designed for excavators. It consists of valve block with brake function, hydraulic motor, brake, multi-stage planetary gearbox. It features high working pressure, good stability, compact design, light weight, easy installation and maintenance. It can bear hydraulic and external load impact. The output gear shaft can directly drive the ring gear on the slewing platform. With above advantages, these products are widely used in slewing platform drives in construction vehicles, crawler excavators, aerial platforms, tracked vehicles and so on. They are not only popular in Chinese market, but also exported to Singapore, India, Korea, Netherlands and other countries in the world.

The models listed in this catalogue are already put into production. We can also produce different products according to different installation dimension and reduction ratio requested by customers. Please contact our technical department or sales department for more information if need.

2、Model selection:



3、Example of model no:

IWYHG 33A-2800 means the slewing drive has two-stage planetary gearboxes, module of first stage gearbox is 3mm, module of second stage gearbox is 3mm, the design mark is A, and the nominal output torque is 2800N.m.

4. Definition

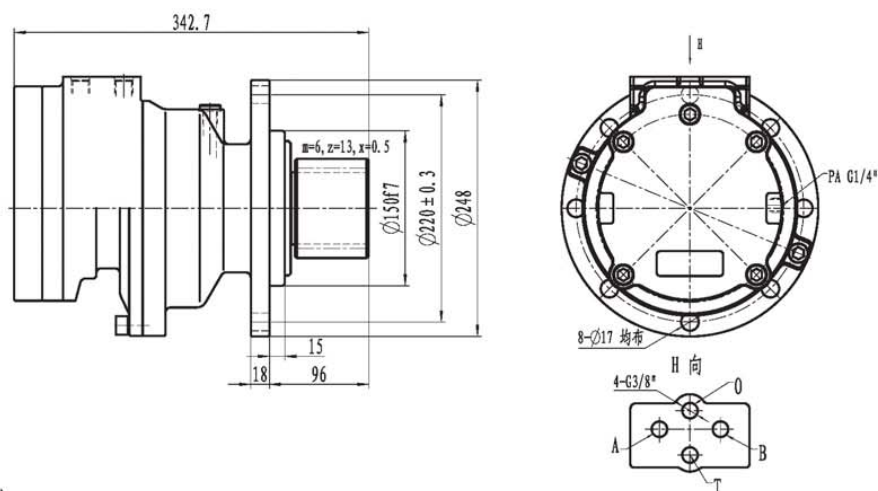
- 1) Total displacement (ml/r) is the amount of oil needed for one rotation of hydraulic transmission drive.

Total displacement (ml/r) = displacement of hydraulic motor (ml/r) * reduction ratio

- 2) Theoretical oil flow of the pump (l/min) = total displacement (ml/r) * output shaft speed of hydraulic transmission drive (r/min) / 1000

外形尺寸

Dimension

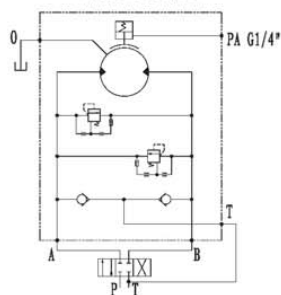


技术参数

Technical Data

额定输出扭矩 Output Torque (N·m)	转速 Speed (r/min)	传动比 Ratio	额定压力 Rated Pressure (MPa)	总排量 Displacement (ml/r)	液压马达排量 Motor Displacement (ml/r)	总重量 Weight (Kg)	适用机重 Excavator type (Ton)
1000	0-100	30.33	21.5	401.93	20.306	50	3.5

液压原理图
Hydraulic diagram



此回转装置的控制阀中位机能必须为“0”型；

The neutral position of the control valve must be “0” type;

马达补油口T要与控制阀T口连接；

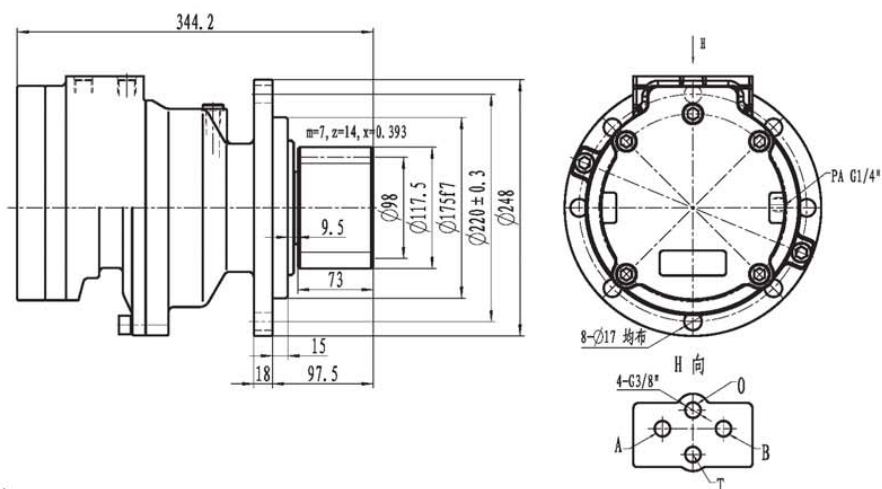
The oil boost port T of hydraulic motor should be connected with T port of control valve;

制动器最大耐压5MPa。

Maximum pressure of the brake is 5MPa.

外形尺寸

Dimension

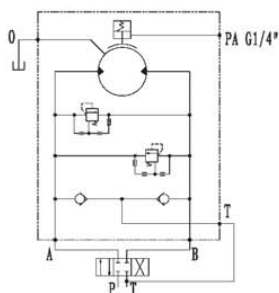


技术参数

Technical Data

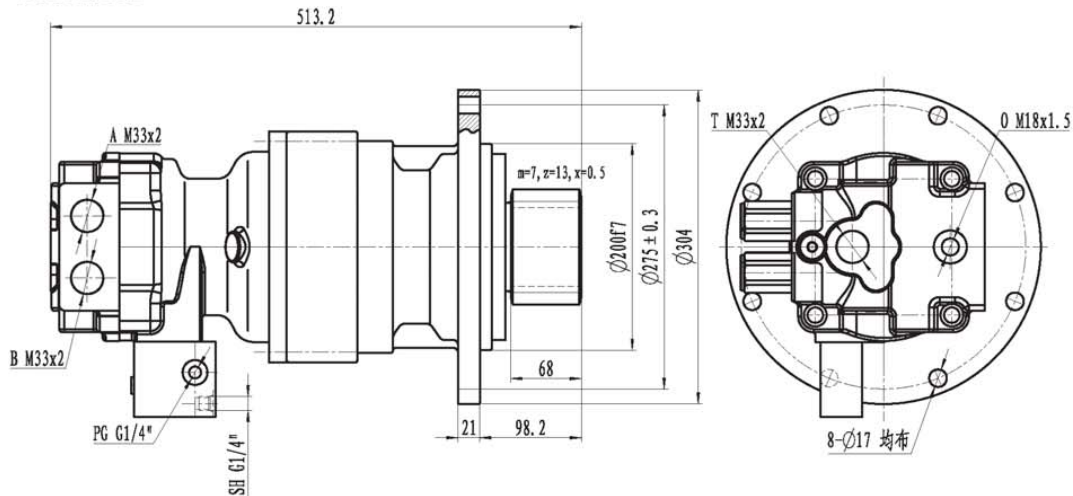
额定输出扭矩 Output Torque (N · m)	转速 Speed (r/min)	传动比 Ratio	额定压力 Rated Pressure (MPa)	总排量 Displacement (ml/r)	液压马达排量 Motor Displacement (ml/r)	总重量 Weight (Kg)	适用机重 Excavator type (Ton)
1400	48-91	30.33	21.5	564	18.6	50	5

液压原理图
Hydraulic diagram



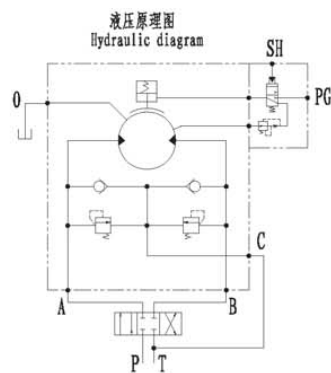
此回转装置的控制阀中位机能必须为“O”型；
The neutral position of the control valve must be “O” type;
马达补油口T要与控制阀T口连接；
The oil boost port T of hydraulic motor should be connected with T port of control valve;
制动器最大耐压5MPa。
Maximum pressure of the brake is 5MPa.

外形尺寸 Dimension



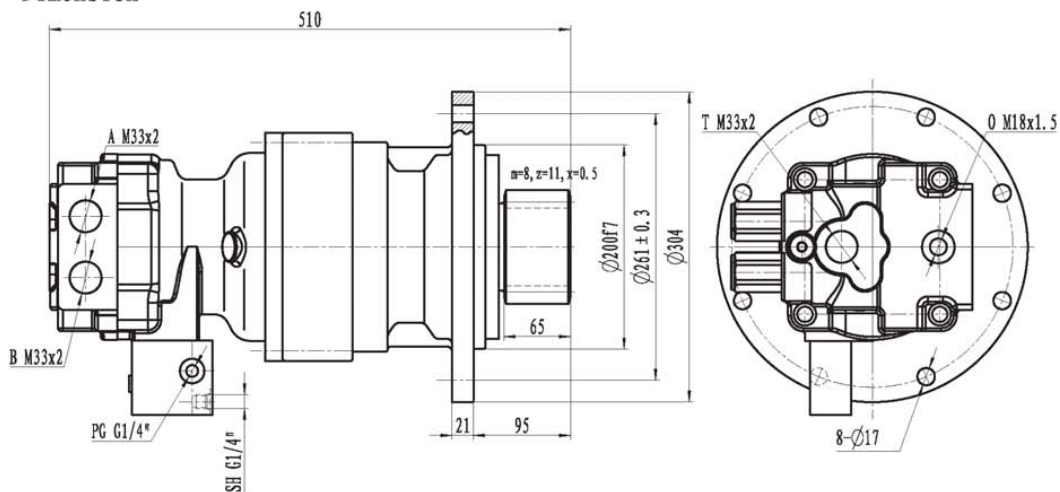
技术参数 Technical Data

额定输出扭矩 Output Torque (N·m)	转速 Speed (r/min)	传动比 Ratio	额定压力 Rated Pressure (MPa)	总排量 Displacement (ml/r)	液压马达排量 Motor Displacement (ml/r)	总重量 Weight (Kg)	适用机重 Excavator type (Ton)
2600	0-80	19.46	20	1028.87	52.871	70	7-8



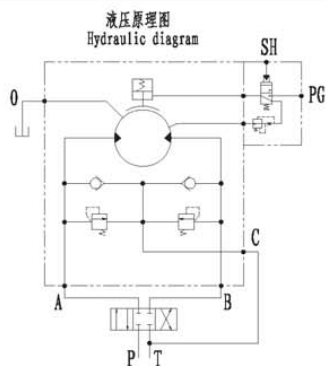
此回转装置的控制阀中位机能必须为“0”型;
The neutral position of the control valve must be “0” type;
马达补油口T要与控制阀T口连接;
The oil boost port T of hydraulic motor should be connected with T port of control valve;
制动器最大耐压5MPa.
Maximum pressure of the brake is 5MPa.

外形尺寸 Dimension



技术参数 Technical Data

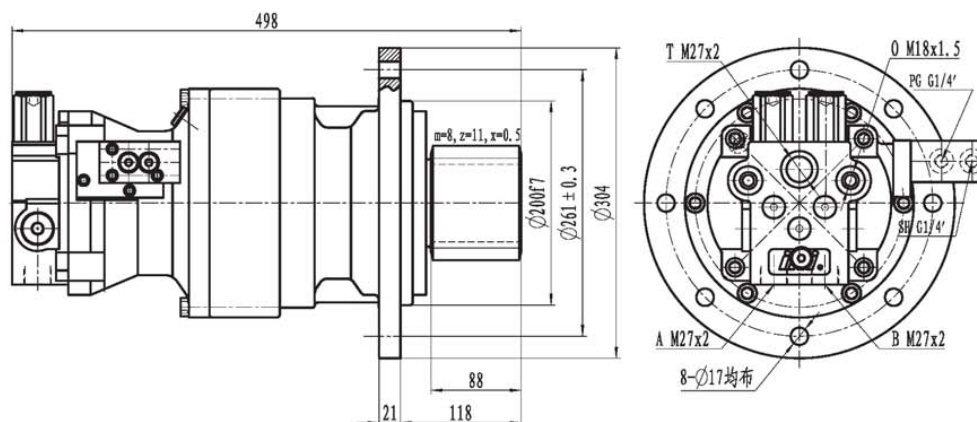
额定输出扭矩 Output Torque (N · m)	转速 Speed (r/min)	传动比 Ratio	额定压力 Rated Pressure (MPa)	总排量 Displacement (ml/r)	液压马达排量 Motor Displacement (ml/r)	总重量 Weight (Kg)	适用机重 Excavator type (Ton)
2600	0-80	19.46	20	1028.87	52.871	70	8



此回转装置的控制阀中位机能必须为“0”型;
The neutral position of the control valve must be “0” type;
马达补油口T要与控制阀T口连接;
The oil boost port T of hydraulic motor should be connected with T port of control valve;
制动器最大耐压5MPa.
Maximum pressure of the brake is 5MPa.

外形尺寸

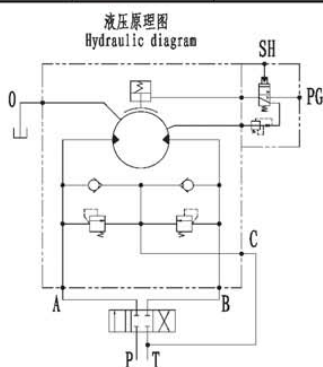
Dimension



技术参数

Technical Data

额定输出扭矩 Output Torque (N · m)	转速 Speed (r/min)	传动比 Ratio	额定压力 Rated Pressure (MPa)	总排量 Displacement (ml/r)	液压马达排量 Motor Displacement (ml/r)	总重量 Weight (Kg)	适用机重 Excavator type (Ton)
1900	0-102	19.46	22	701.436	36.045	70	7-8T轮式



此回转装置的控制阀中位机能必须为“0”型；

The neutral position of the control valve must be “0” type;

马达补油口T要与控制阀T口连接；

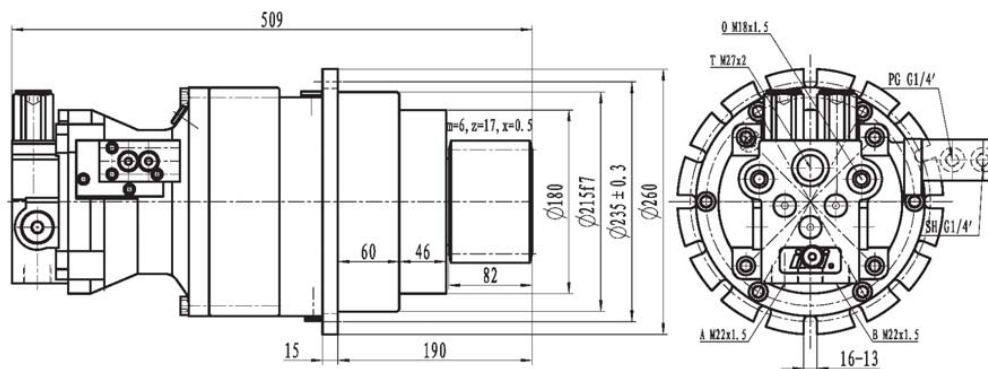
The oil boost port T of hydraulic motor should be connected with T port of control valve;

制动器最大耐压5MPa。

Maximum pressure of the brake is 5MPa.

外形尺寸

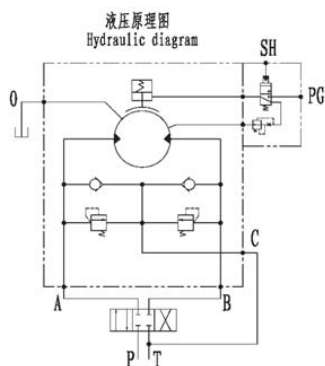
Dimension



技术参数

Technical Data

额定输出扭矩 Output Torque (N·m)	转速 Speed (r/min)	传动比 Ratio	额定压力 Rated Pressure (MPa)	总排量 Displacement (ml/r)	液压马达排量 Motor Displacement (ml/r)	总重量 Weight (Kg)	适用机重 Excavator type (Ton)
1300	0-53.2	19.46	14	856.372	44	70	6-8T轮式



此回转装置的控制阀中位机能必须为“0”型;

The neutral position of the control valve must be "0" type;

马达补油口T要与控制阀T口连接:

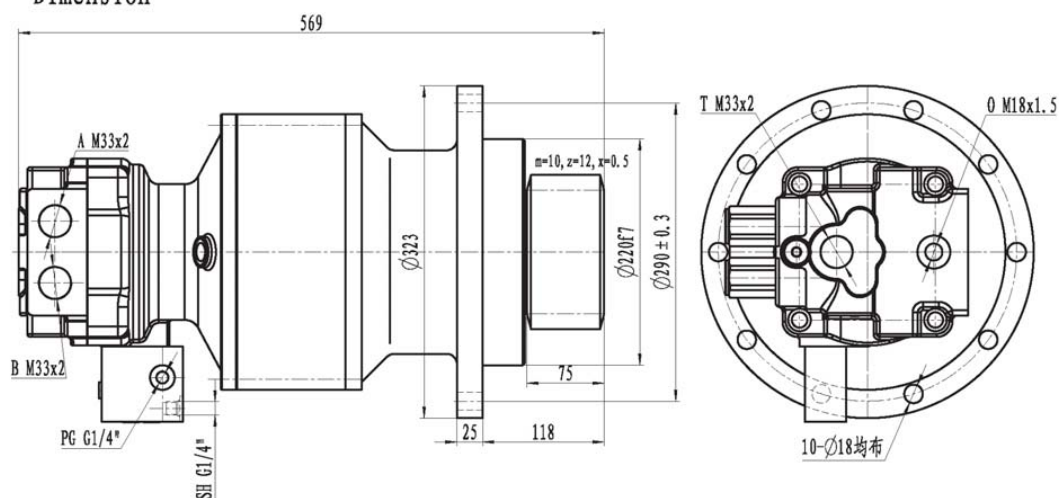
The oil boost port T of hydraulic motor should be connected with T port of control valve;

制动器最大耐压5MPa。

Maximum pressure of the brake is 5MPa.

外形尺寸

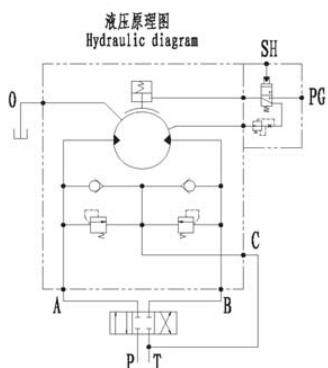
Dimension



技术参数

Technical Data

额定输出扭矩 Output Torque (N·m)	转速 Speed (r/min)	传动比 Ratio	额定压力 Rated Pressure (MPa)	总排量 Displacement (ml/r)	液压马达排量 Motor Displacement (ml/r)	总重量 Weight (Kg)	适用机重 Excavator type (Ton)
3500	0-80	18.4	23	1192.9	64.832	90	12-14



此回转装置的控制阀中位机能必须为“0”型；

The neutral position of the control valve must be “0” type;

马达补油口T要与控制阀T口连接；

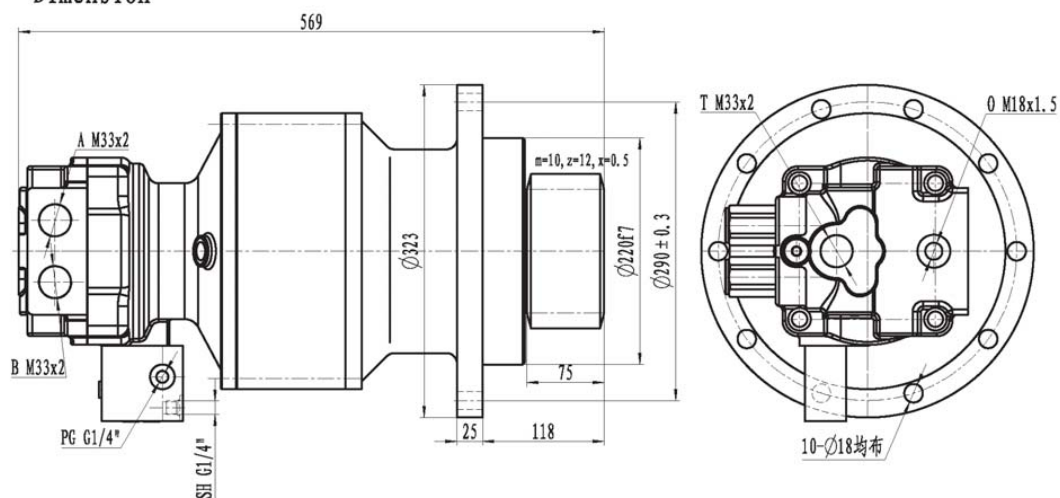
The oil boost port T of hydraulic motor should be connected with T port of control valve;

制动器最大耐压5MPa。

Maximum pressure of the brake is 5MPa.

外形尺寸

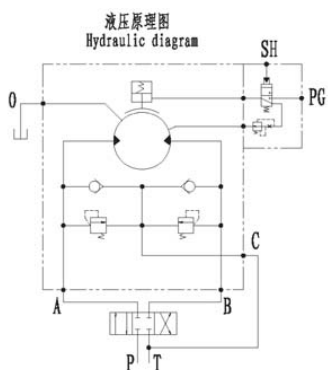
Dimension



技术参数

Technical Data

额定输出扭矩 Output Torque (N·m)	转速 Speed (r/min)	传动比 Ratio	额定压力 Rated Pressure (MPa)	总排量 Displacement (ml/r)	液压马达排量 Motor Displacement (ml/r)	总重量 Weight (Kg)	适用机重 Excavator type (Ton)
4000	0-100	18.4	26	1192.9	64.832	90	14-16



此回转装置的控制阀中位机能必须为“0”型；

The neutral position of the control valve must be “0” type;

马达补油口T要与控制阀T口连接；

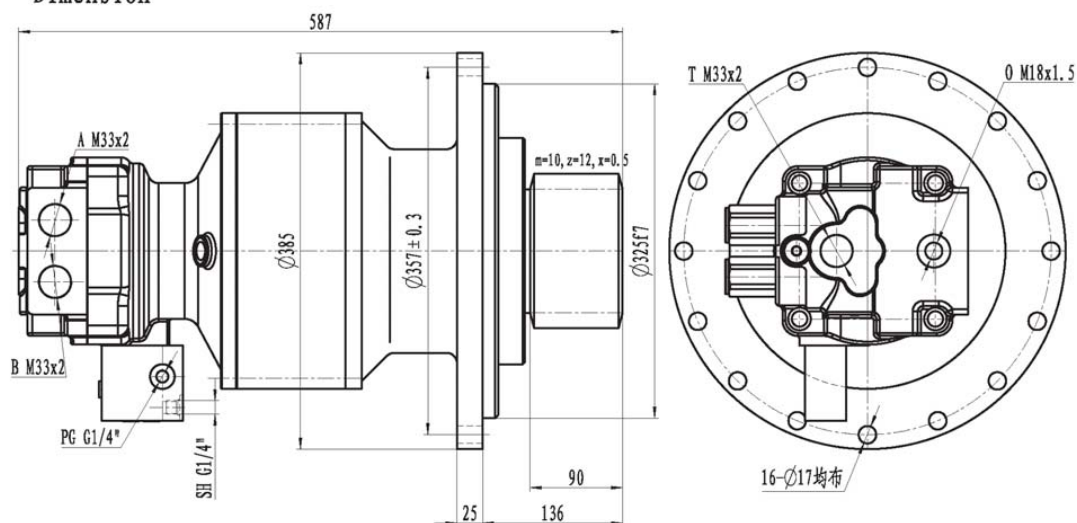
The oil boost port T of hydraulic motor should be connected with T port of control valve;

制动器最大耐压5MPa。

Maximum pressure of the brake is 5MPa.

外形尺寸

Dimension

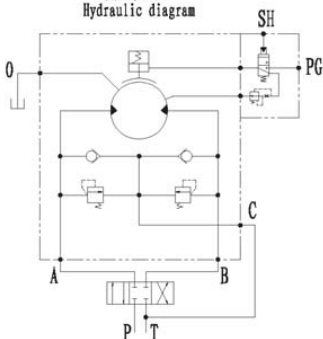


技术参数

Technical Data

额定输出扭矩 Output Torque (N·m)	转速 Speed (r/min)	传动比 Ratio	额定压力 Rated Pressure (MPa)	总排量 Displacement (ml/r)	液压马达排量 Motor Displacement (ml/r)	总重量 Weight (Kg)	适用机重 Excavator type (Ton)
4000	0-100	18.4	26	1192.9	64.832	90	14-16

液压原理图
Hydraulic diagram



此回转装置的控制阀中位机能必须为“0”型；

The neutral position of the control valve must be “0” type;

马达补油口T要与控制阀T口连接；

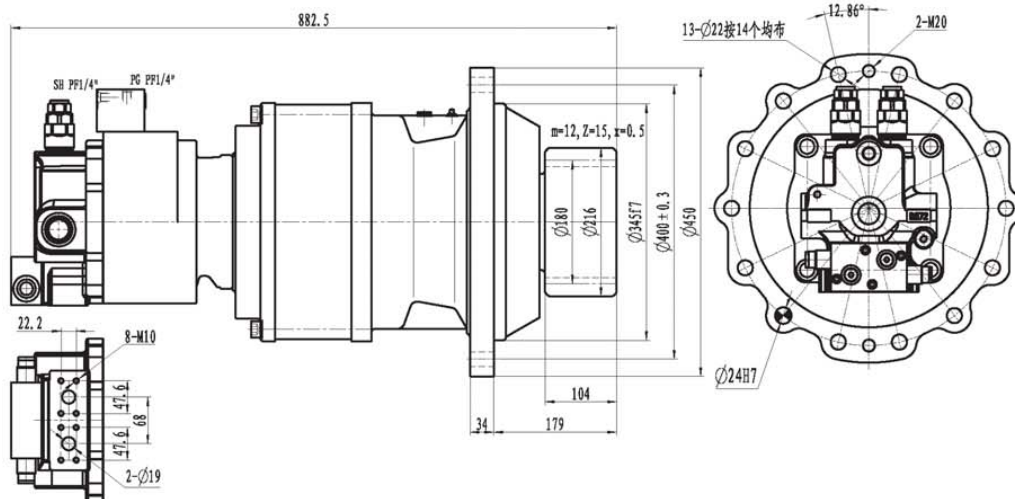
The oil boost port T of hydraulic motor should be connected with T port of control valve;

制动器最大耐压5MPa。

Maximum pressure of the brake is 5MPa.

外形尺寸

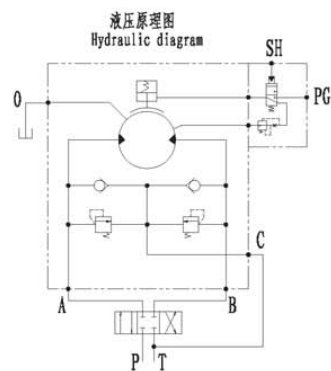
Dimension



技术参数

Technical Data

额定输出扭矩 Output Torque (N·m)	转速 Speed (r/min)	传动比 Ratio	额定压力 Rated Pressure (MPa)	总排量 Displacement (ml/r)	液压马达排量 Motor Displacement (ml/r)	总重量 Weight (Kg)	适用机重 Excavator type (Ton)
12000	0-67	20.036	28	3438.13	171.6	125	20-25



此回转装置的控制阀中位机能必须为“0”型；

The neutral position of the control valve must be “0” type;

马达补油口T要与控制阀T口连接；

The oil boost port T of hydraulic motor should be connected with T port of control valve;

制动器最大耐压5MPa。

Maximum pressure of the brake is 5MPa.