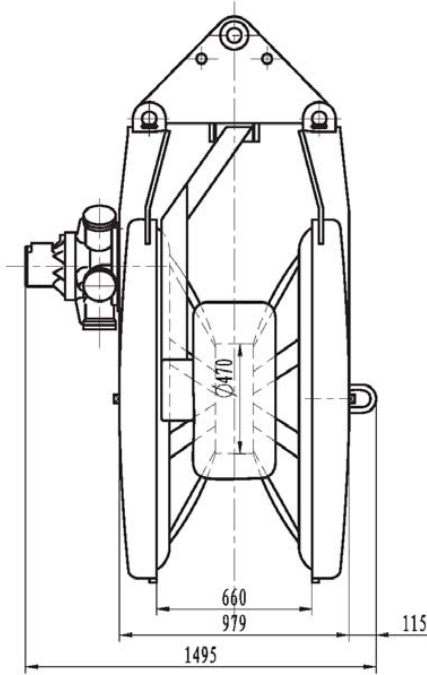
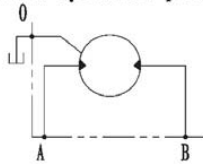


56 inch Power Block

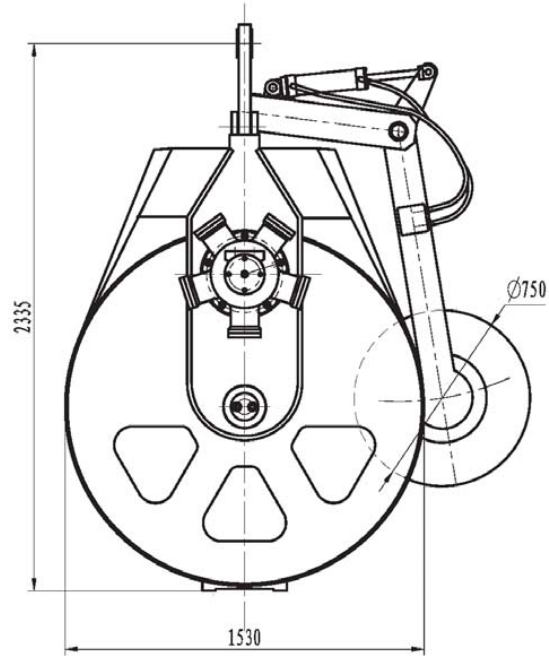


动力滑车液压原理图  
Power block hydraulic principle diagram

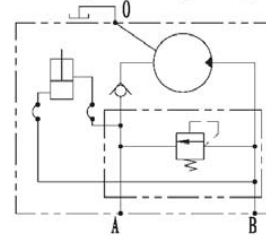


动力滑车主要技术性能参数  
Power block main specification

工作拉力 Working pull (kN)	70
绳速 Speed (m/min)	80
卷筒排量 Drum displacement (mL/r)	11700
系统额定压力 System rated pressure (MPa)	18
工作压差 Working pressure diff. (MPa)	16
泵理论流量 Pump flow (L/min)	381 ( $\eta_v=0.9$ )
液压马达型号 Hydraulic motor type	MRH-1500
传动比 ratio	$i=7.65$



压辊轮液压原理图  
Clip roller hydraulic principle diagram



压辊轮主要技术性能参数  
Clip roller main specification

压紧力 Working pull (N)	500
输出转速 Speed (r/min)	42