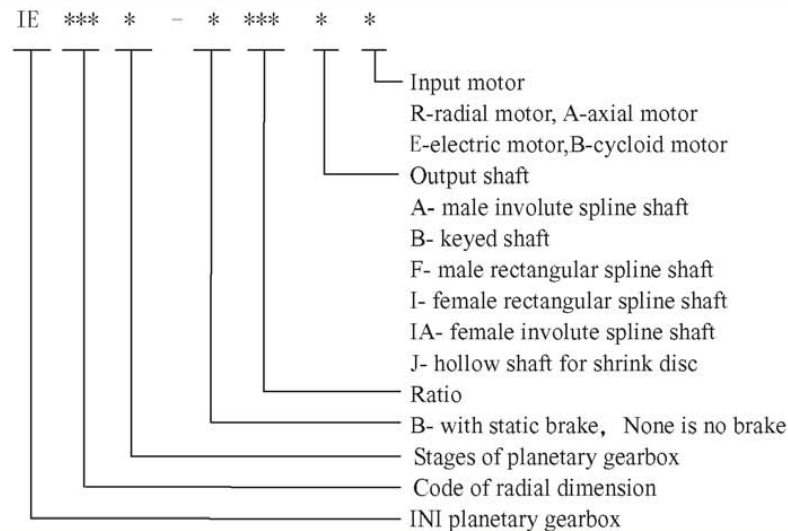


## IE Series planetary gearbox

### 1. Brief introduction

IE series planetary gearbox consists of multi-stages planetary drives. It features compact figure, module design, high output torque, various output shaft, high efficiency, low noise and good economy. So they are widely used in construction engineering, railway, high road, ship, petroleum, coal mine, and metallurgy industries. Different hydraulic motor or electric motor could be available to meet customer requirement.

### 2. Model Options



### 3. Options Example

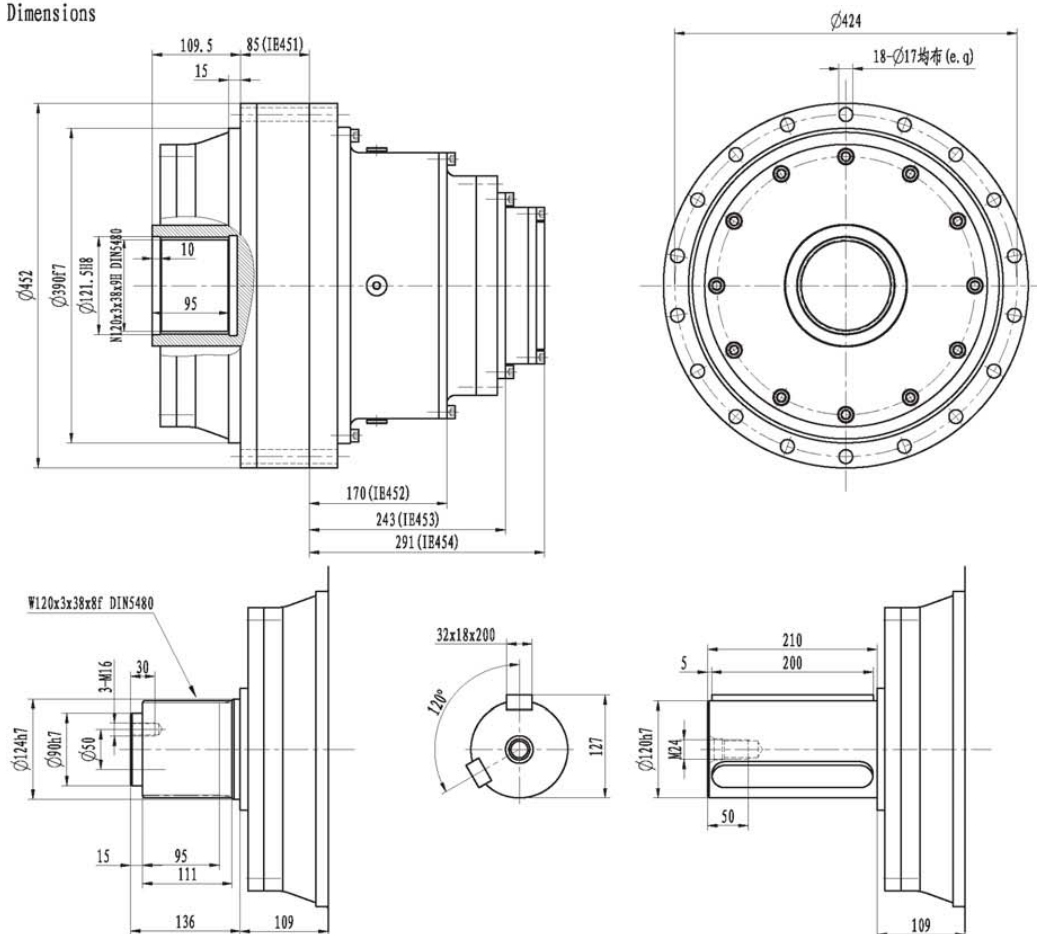
IE613-B110IAR represents that the maximum radial dimension of the planetary gearbox is 610mm, three stage with static brake, ratio is 110, the output shaft is female involute spline shaft type, fitted with radial hydraulic motor.

### 4. Technical instruction

- 1) The planetary gearbox can fit with static brake.
- 2) The selection of planetary gearbox should consider the safety coefficient, FEM and the service life etc.
- 3) The planetary gearbox could bear little radial load, and usually used in only transfer torque. While installation and performance the gearbox please check the output shaft whether bear bending.
- 4) The selection of lubricant depend on the ambient environment and working temperature. Replace the lubricant after the first operation 150~200 hours. Then replace the lubricant after every 2000~4000 hours, but at least every one years. Recommend replace the lubricant when the oil have warm temperature in order to drain empty.
- 5) The ideal oil temperature is  $-15^{\circ}\text{C}\sim+40^{\circ}\text{C}$ , the allowable oil temperature does not exceed  $+80^{\circ}\text{C}$ .

外形尺寸

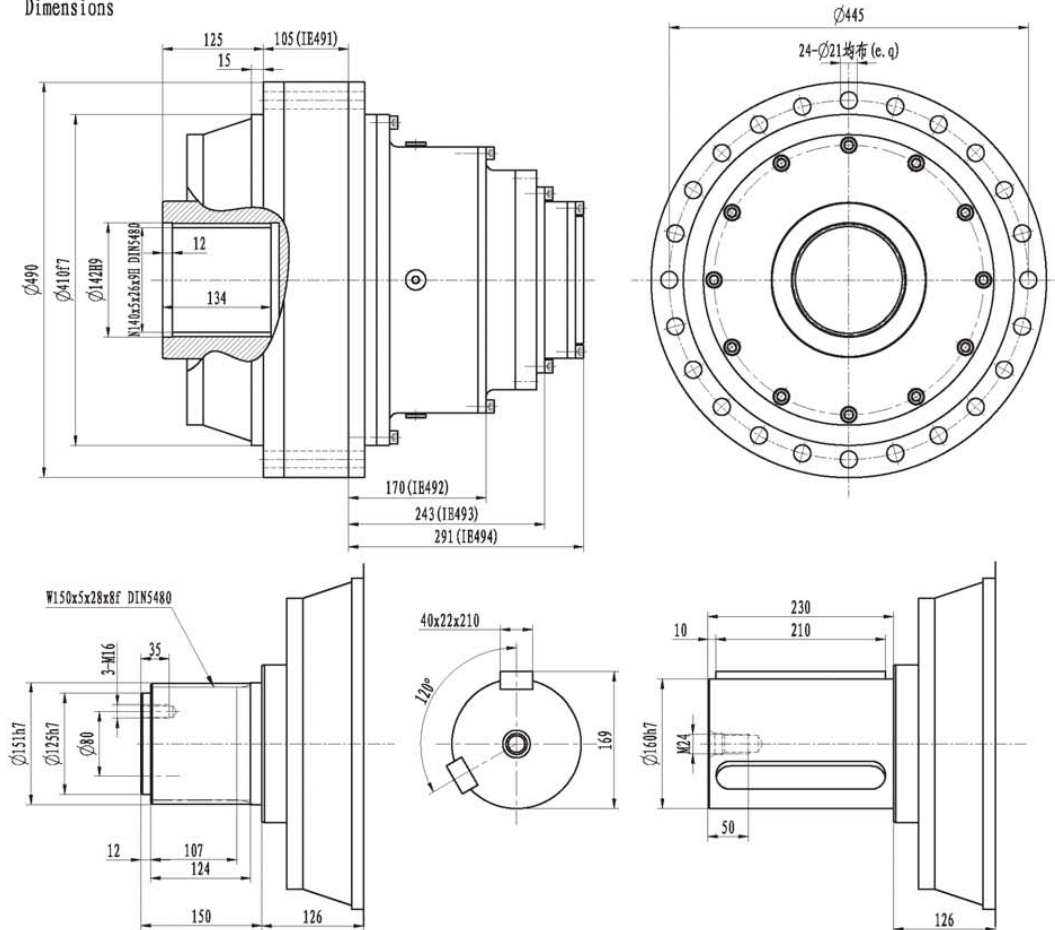
Dimensions



最大输出扭矩 Output Torque $T_{max}$ Nm	传动比 (Ratio) $i$				最高输入转速 Max. Input Speed r/min	适配马达 Hydraulic Motor		
	IE451	IE452	IE453	IE454		DANFOSS EATON M + S	REXROTH LINDE SAM SAUER	SAI DINAMIC OIL CALZONI
63000		16	70.85	283.41	4000			
	4	17.71	88.57	392.24				
	4.6	20	116	513.72				
	5.5	23.2	140	700				
		28	162.4	941.92				
		32.2	225.4	1127				
<p>· 减速机输入转向与输出转向相同, 除表中所列传动比外, 对有批量的产品传动比可以另选。          · Gearbox input direction is same to the output direction. Other ratio is optional.          · 该系列减速机可根据用户需要选配不同形式的液压马达或电机作为驱动元件, 并可根据实际工况配置静态制动器。          · Allowing fitted with different type hydraulic motors and E-motor, and static brake.          · 根据应用场合不同, 减速器的使用选型也有所变化, 详情请咨询本公司相关技术人员。          · Differently sized units and additional design variants can be furnished if requested.</p>								

外形尺寸

Dimensions

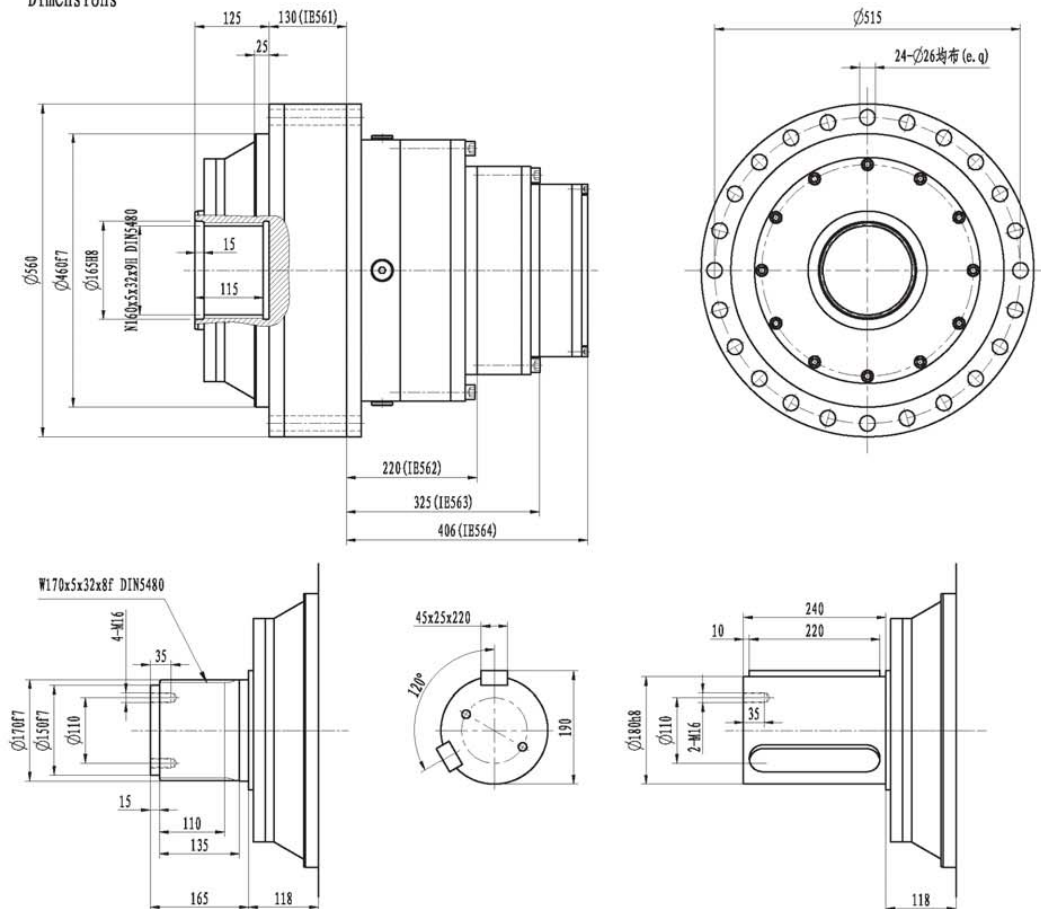


最大输出扭矩 Output Torque $T_{max}$ Nm	传动比 (Ratio) i				最高输入转速 Max. Input Speed r/min	适配马达 Hydraulic Motor		
	IE491	IE492	IE493	IE494		DANFOSS	REXROTH	SAI
109000	3.83	15.23	60.92	304.6	4000	EATON M + S	LINDE SAM SAUER	DINAMIC OIL CALZONI
	4.42	19.15	88.33	353.3				
	5.06	22.1	110	440				
		25.64	148.7	743.5				
		29.75	172.5	862.5				
		35.42	247.9	1239.5				

- 减速机输入转向与输出转向相同, 除表中所列传动比外, 对有批量的产品传动比可以另选。
- Gearbox input direction is same to the output direction. Other ratio is optional.
- 该系列减速机可根据用户需要选配不同形式的液压马达或电机作为驱动元件, 并可根据实际工况配置静态制动器。
- Allowing fitted with different type hydraulic motors and E-motor, and static brake.
- 根据应用场合不同, 减速器的使用选型也有所变化, 详情请咨询本公司相关技术人员。
- Differently sized units and additional design variants can be furnished if requested.

外形尺寸

Dimensions

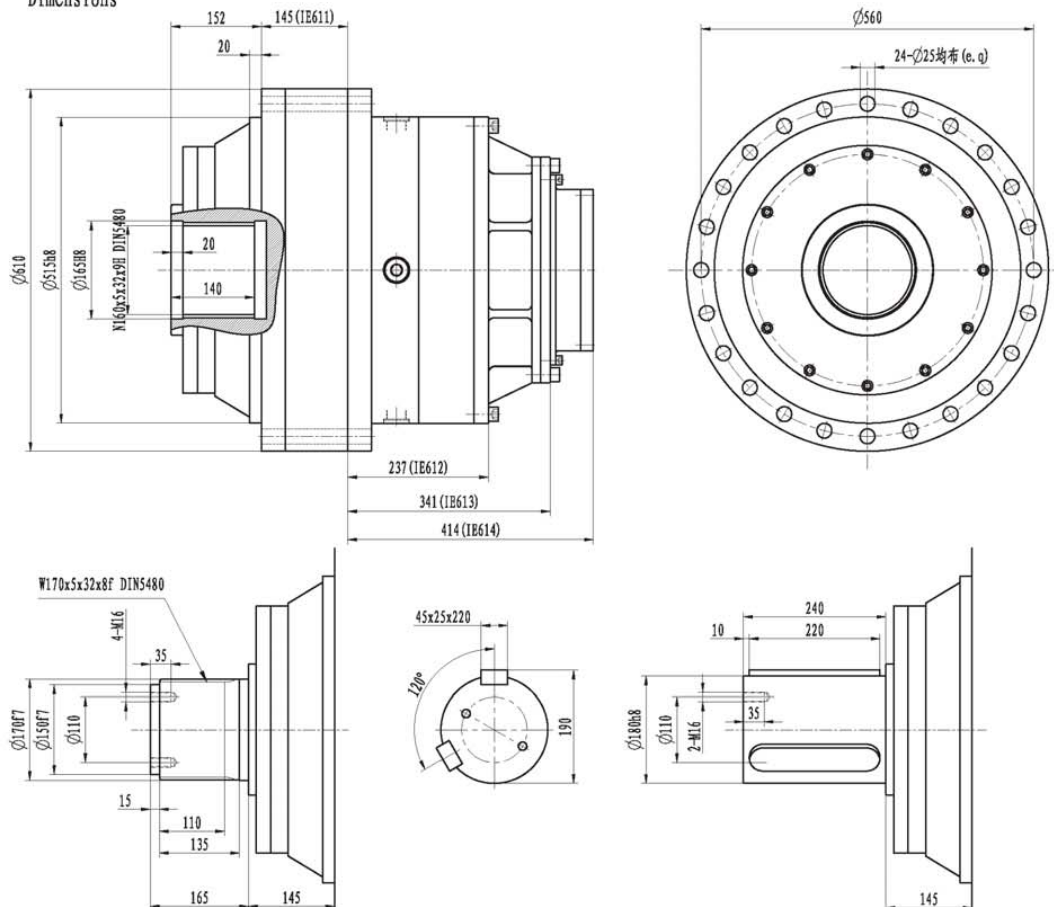


最大输出扭矩 Output Torque $T_{max}$ Nm	传动比 (Ratio) i				最高输入转速 Max. Input Speed r/min	适配马达 Hydraulic Motor		
	IE561	IE562	IE563	IE564		DANFOSS EATON M + S	REXROTH LINDE SAM SAUER	SAI DINAMIC OIL CALZONI
125000		16	64	294.4	4000			
	4	18.40	88	404.8				
	4.6	20	101.2	506				
	5.5	25.47	128.5	665.5				
		28	154	770				
		38.5	196	980				

· 减速机输入转向与输出转向相同, 除表中所列传动比外, 对有批量的产品传动比可以另选。  
 · Gearbox input direction is same to the output direction. Other ratio is optional.  
 · 该系列减速机可根据用户需要选配不同形式的液压马达或电机作为驱动元件, 并可根据实际工况配置静态制动器。  
 · Allowing fitted with different type hydraulic motors and E-motor, and static brake.  
 · 根据应用场合不同, 减速器的使用选型也有所变化, 详情请咨询本公司相关技术人员。  
 · Differently sized units and additional design variants can be furnished if requested.

外形尺寸

Dimensions



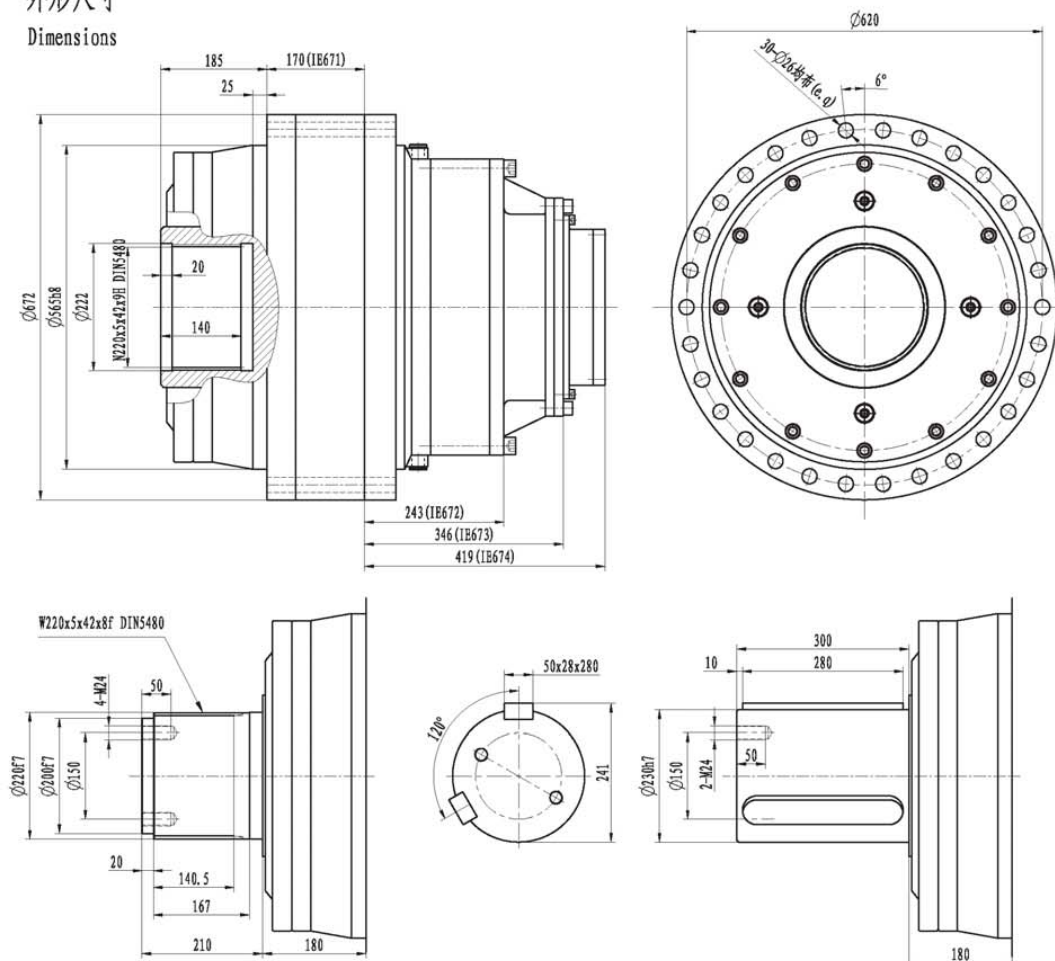
最大输出扭矩 Output Torque $T_{max}$ Nm	传动比 (Ratio) i				最高输入转速 Max. Input Speed r/min	适配马达 Hydraulic Motor		
	IE611	IE612	IE613	IE614		DANFOSS	REXROTH LINDE SAM SAUER	SAI DINAMIC OIL CALZONI
140000		16.52	66.08	292.67	4000	EATON M + S		
	4	18.40	81.49	360.92				
	4.63	22	110	487.19				
	4.83	25.47	127.35	636.75				
		28	162.40	719.43				
		32.42	226.94	1005.3				

- 减速机输入转向与输出转向相同, 除表中所列传动比外, 对有批量的产品传动比可以另选。
- Gearbox input direction is same to the output direction. Other ratio is optional.
- 该系列减速机可根据用户需要选配不同形式的液压马达或电机作为驱动元件, 并可根据实际工况配置静态制动器。
- Allowing fitted with different type hydraulic motors and E-motor, and static brake.
- 根据应用场合不同, 减速器的使用选型也有所变化, 详情请咨询本公司相关技术人员。
- Differently sized units and additional design variants can be furnished if requested.



外形尺寸

Dimensions

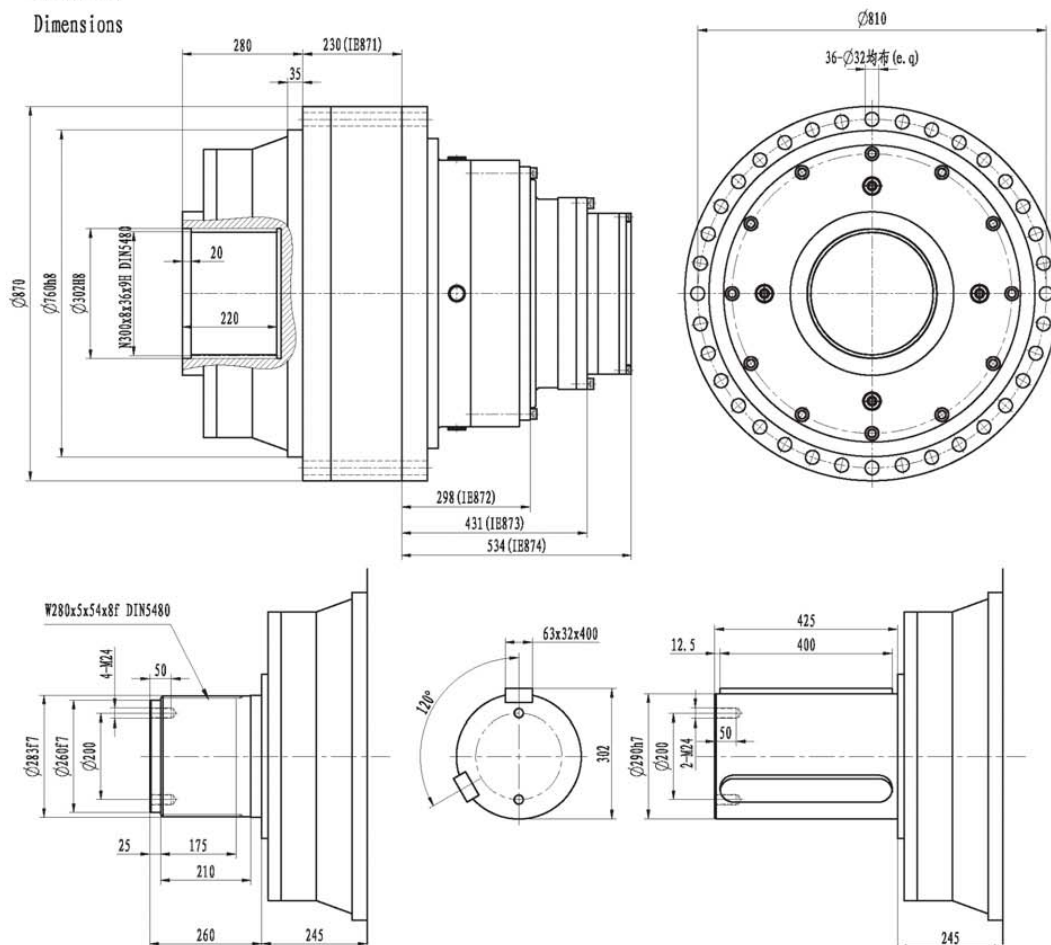


最大输出扭矩 Output Torque $T_{max}$ Nm	传动比 (Ratio) i				最高输入转速 Max. Input Speed r/min	适配马达 Hydraulic Motor		
	IE671	IE672	IE673	IE674		DANFOSS	REXROTH	SAI
245000	3.83	15.32	77.91	281.89	4000	EATON M + S	LINDE SAM SAUER	DINAMIC OIL CALZONI
	4.4	17.6	88	352.05				
	5.25	24.2	121	556.62				
		28.87	169.4	665.53				
		30.8	202.1	847				
		36.75	257.2	1185.8				

- 减速机输入转向与输出转向相同, 除表中所列传动比外, 对有批量的产品传动比可以另选。
- Gearbox input direction is same to the output direction. Other ratio is optional.
- 该系列减速机可根据用户需要选配不同形式的液压马达或电机作为驱动元件, 并可根据实际工况配置静态制动器。
- Allowing fitted with different type hydraulic motors and E-motor, and static brake.
- 根据应用场合不同, 减速器的使用选型也有所变化, 详情请咨询本公司相关技术人员。
- Differently sized units and additional design variants can be furnished if requested.

外形尺寸

Dimensions

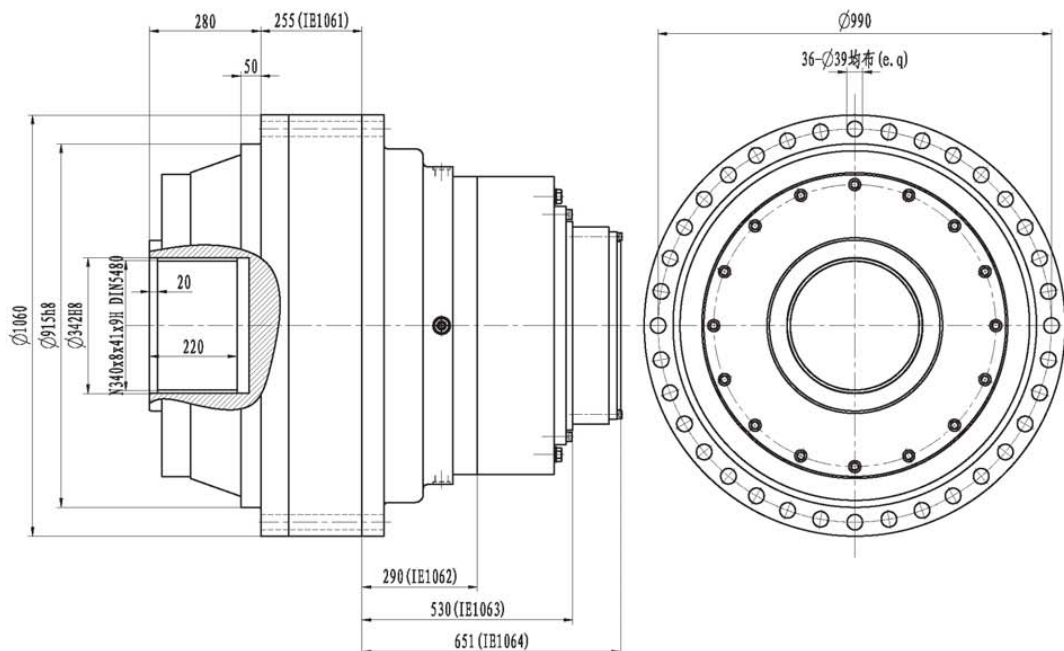


最大输出扭矩 Output Torque $T_{max}$ Nm	传动比 (Ratio) $i$				最高输入转速 Max. Input Speed r/min	适配马达 Hydraulic Motor		
	IE871	IE872	IE873	IE874		DANFOSS	REXROTH	SAI
500000	4.18	17.49	66.35	265.4	4000	EATON M + S	LINDE SAM SAUER	DINAMIC OIL CALZONI
	4.89	20.44	97.4	389.6				
	5.12	25.08	105	525				
		29.34	151.3	756.5				
		30.72	184	920				
		37.71	225.8	1129.2				

- 减速机输入转向与输出转向相同, 除表中所列传动比外, 对有批量的产品传动比可以另选。
- Gearbox input direction is same to the output direction. Other ratio is optional.
- 该系列减速机可根据用户需要选配不同形式的液压马达或电机作为驱动元件, 并可根据实际工况配置静态制动器。
- Allowing fitted with different type hydraulic motors and E-motor, and static brake.
- 根据应用场合不同, 减速器的使用选型也有所变化, 详情请咨询本公司相关技术人员。
- Differently sized units and additional design variants can be furnished if requested.

## 外形尺寸

### Dimensions



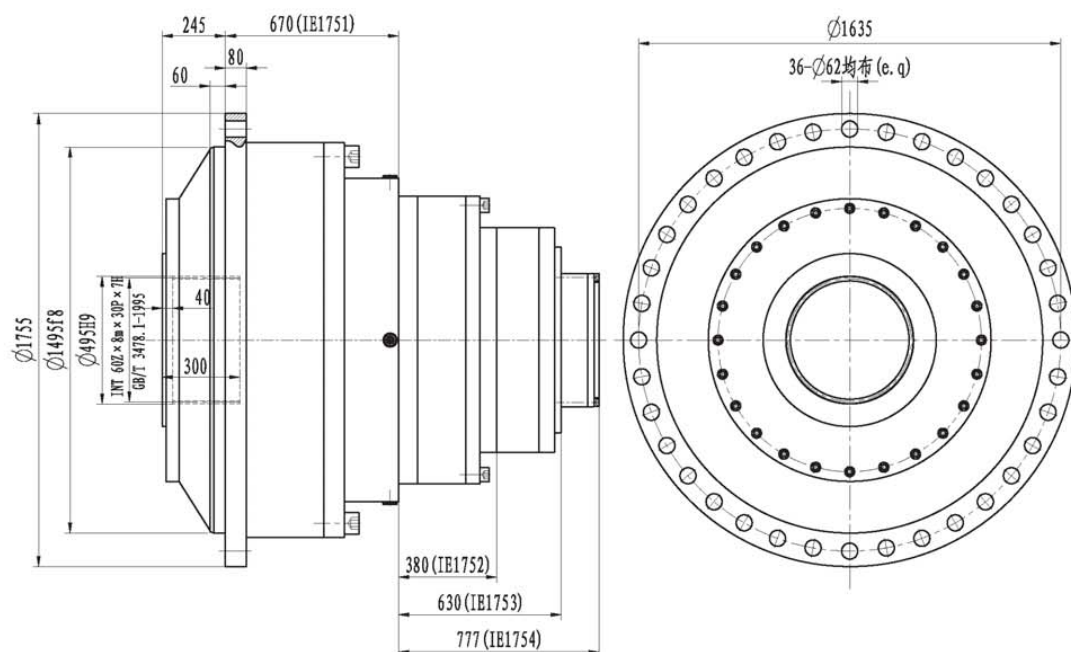
最大输出扭矩 Output Torque $T_{max}$ Nm	传动比 (Ratio) i				最高输入转速 Max. Input Speed r/min	适配马达 Hydraulic Motor		
	IE1061	IE1062	IE1063	IE1064		DANFOSS	REXROTH	SAI
750000	4	16	64	294.4	4000	EATON M + S	LINDE SAM SAUER	DINAMIC OIL CALZONI
	4.6	18.40	88	404.8				
	5	20	101.2	506				
		25.47	121	665.5				
		28	159	770				
		38.5	196	980				

- 减速机输入转向与输出转向相同, 除表中所列传动比外, 对有批量的产品传动比可以另选。
- Gearbox input direction is same to the output direction. Other ratio is optional.
- 该系列减速机可根据用户需要选配不同形式的液压马达或电机作为驱动元件, 并可根据实际工况配置静态制动器。
- Allowing fitted with different type hydraulic motors and E-motor, and static brake.
- 根据应用场合不同, 减速器的使用选型也有所变化, 详情请咨询本公司相关技术人员。
- Differently sized units and additional design variants can be furnished if requested.



### 外形尺寸

### Dimensions



最大输出扭矩 Output Torque T <sub>max</sub> Nm	传动比 (Ratio) i				最高输入转速 Max. Input Speed r/min	适配马达 Hydraulic Motor		
	IE1751	IE1752	IE1753	IE1754				
2000000		15.44	78.89	315.5	4000	DANFOSS	REXROTH	SAI
	3.86	17.28	88.30	353.2			LINDE	DINAMIC OIL
	4.32	21.23	108.5	542.5		EATON	SAM	CALZONI
	4.95	27.22	139.1	695.6		M + S	SAUER	
		34.65	160.7	739.2				
		41.16	210.3	1051.5				

· 减速机输入转向与输出转向相同,除表中所列传动比外,对有批量的产品传动比可以另选。  
· Gearbox input direction is same to the output direction. Other ratio is optional.  
· 该系列减速机可根据用户需要选配不同形式的液压马达或电机作为驱动元件,并可根据实际工况配置静态制动器。  
· Allowing fitted with different type hydraulic motors and E-motor, and static brake.  
· 根据应用场合不同,减速器的使用选型也有所变化,详情请咨询本公司相关技术人员。  
· Differently sized units and additional design variants can be furnished if requested.