

## I3V Series Pump

### 1. Brief Introduction

I3V series pump is swash plate type axial piston pump . I3V Series Pump are designed on the basis of our profound knowledge and long experience , and manufactured under the strict quality control system , thus ensuring I3V series has high efficiency and high reliability .

### 2. Features

I3V series pump have features as follows:

#### 1 . High Power Density

By a half log type swash plate, a lighter and more compact machine with higher pressure rating and increased power density was obtained .

#### 2 . High Efficiency and Large Self-Priming Capability

The spherical valve plate and improved hydraulic balance provide stable cylinder rotation, thus achieving high efficiency even in a low pressure and low speed operating range.

#### 3. Long Life and Low Noise

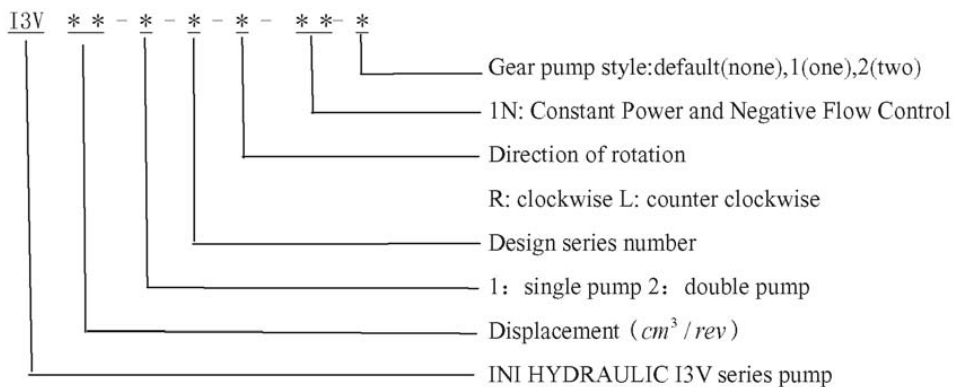
A long life is obtained by adopting main bearings of large capacity and the piston return mechanism that compensates for the wear of the shoes. Even less noise has been achieved because of the optimum design of the valve plate and the casing rigidity.

#### 4 . Nice control performance

The tilting angle control of the swash plate is conducted by the hydraulic pressure piston which composes the pilot and the servo mechanism .

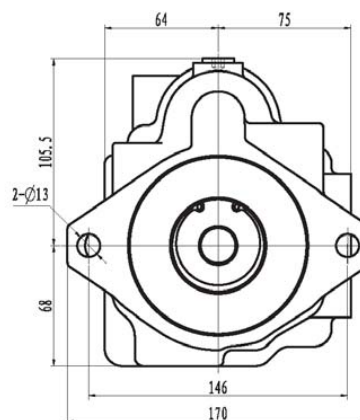
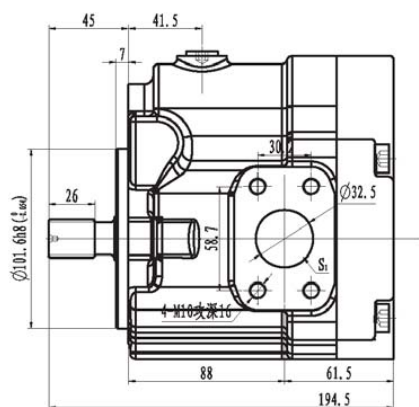
I3V series pump has optimum function design and is provided with further improved power density, efficiency, and reliability, based upon our long and rich experience. I3V series pump are utilized world-wide to provide the power source for hydraulic excavators cranes, construction machines, car carrier and many other special purpose vehicles.

### 3. Model Options



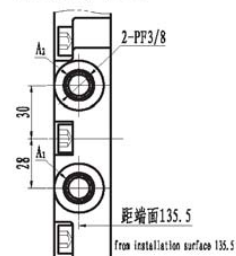
## 外形尺寸

### Dimensions



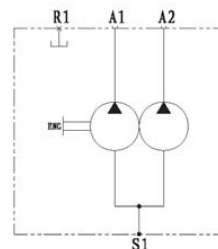
## 出口口尺寸

### delivery port



## 液压原理图

### Hydraulic Principle



## 外花键输入参数

### Dimensions of shaft end

型号 type	齿数 no. of teeth	径节 diametral pitch	压力角 pressure angle	齿顶圆直径 major diameter	齿根圆直径 base diameter	跨棒距 min measurement over two pins	量棒直径 pin diameter	花键标准 involute spline rule
I3V2-10S	13	16/32	30°	$\phi 21.8^{+0.13}_{-0.13}$	$\phi 18.16^{+0.11}_{-0.11}$	24.94	3.048	ANSI B92.1-1970

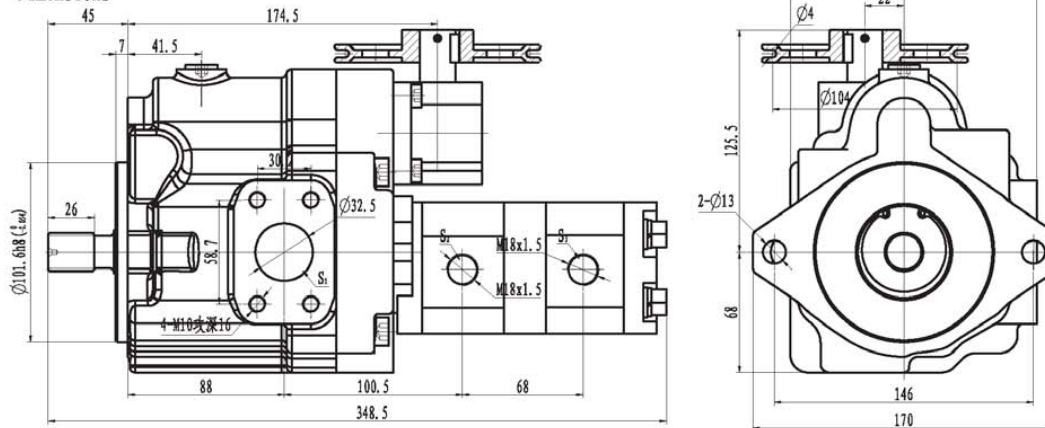
## 主要性能参数

### Main Specifications

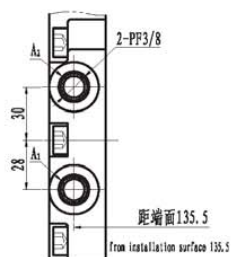
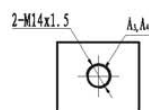
型号 pump size	排量 (mL/r) displacement	压力 pressure (MPa)		转速 speed (r/min)		转向 direction of rotation	适用机重 (Ton) Applicable Vehicle Mass (Tm)
		额定 rated	最高 peak	额定 rated	最高 peak		
I3V2-10S	2x10	20	23	2300	2500	从轴端看逆时针 counter clockwise (viewed from shaft end)	2
I3V1-20S	20						

## 外形尺寸

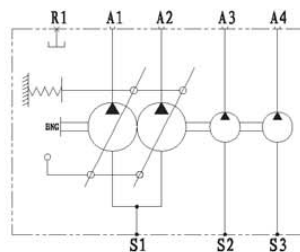
### Dimensions



## 出口尺寸 delivery port



## 液压原理图 Hydraulic Principle



## 外花键输入参数

### Dimensions of shaft end

型号 type	齿数 no. of teeth	径节 diametral pitch	压力角 pressure angle	齿顶圆直径 major diameter	齿根圆直径 base diameter	跨棒距 min measurement over two pins	量棒直径 pin diameter	花键标准 involute spline rule
I3V2-10S	13	16/32	30°	Φ21.8 <sup>+0.13</sup> <sub>-0.13</sub>	Φ18.16 <sup>+0.11</sup> <sub>-0.11</sub>	24.94	3.048	ANSI B92.1-1970

## 主要性能参数

### Main Specifications

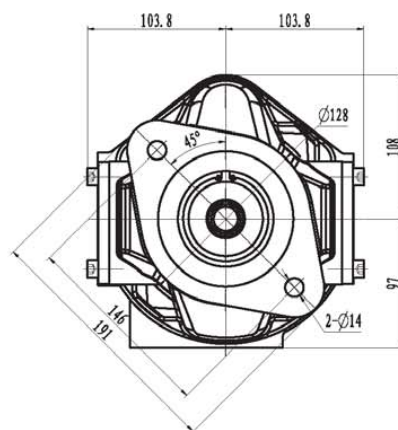
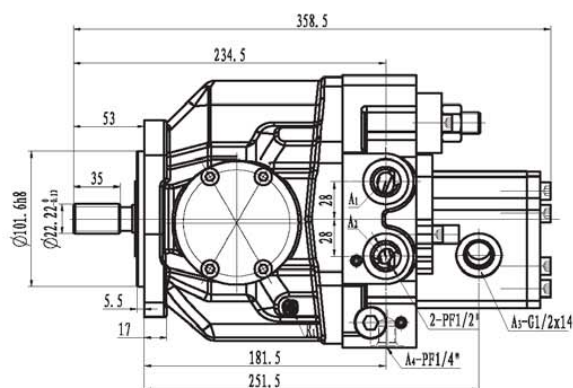
型号 pump size	排量 (mL/r) displacement	压力 pressure (MPa) 额定 rated 最高 peak	转速 speed (r/min) 额定 rated 最高 peak	辅助泵排量 (mL/r) gear pump displacement 前泵 front 后泵 rear	辅助泵压力 (MPa) gear pump pressure 额定 rated 最高 peak	辅助泵转速 (r/min) gear pump speed 最低 min 额定 rated 最高 peak	转向 direction of rotation 从轴端看逆时针 counter clockwise (viewed from shaft end)	适用机重 (Ton) Applicable Vehicle Mass (Ton)
I3V2-10S	2x10	20 23	2300 2500	4 4	16 20	300 2000 3000	从轴端看逆时针 counter clockwise (viewed from shaft end)	2
I3V1-20S	20							

注: (1) 配套齿轮泵可根据用户需求做出更改。

NT08: (1) gear pump style can be change according to customer's need.

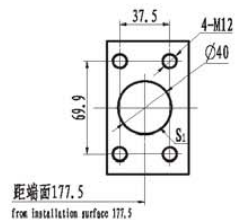
## 外形尺寸

### Dimensions



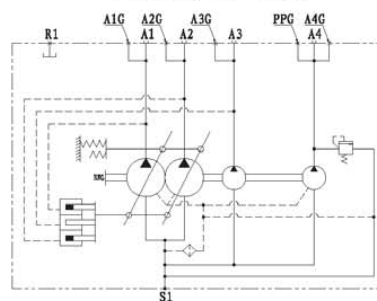
## 吸油口尺寸

### Main Pump Suction Port



## 液压原理图

### Hydraulic Principle



## 外花键输入参数

### Dimensions of shaft end

型号 type	齿数 no. of teeth	径节 diametral pitch	压力角 pressure angle	齿顶圆直径 major diameter	齿根圆直径 base diameter	跨棒距 min measurement over two pins	量棒直径 pin diameter	花键标准 involute spline rule
I3V2-28N	13	16/32	30°	φ22.22 <sup>+0.13</sup>	φ18.16 <sup>+0.11</sup>	24.94	3.048	ANSI B92.1-1970

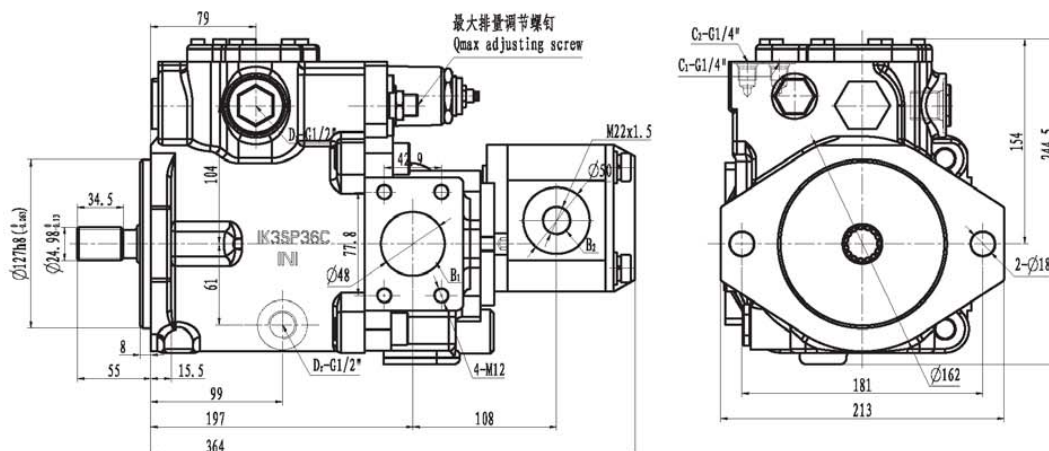
## 主要性能参数

### Main Specifications

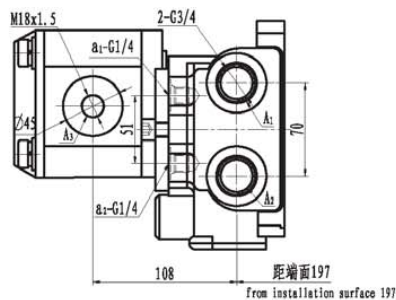
型号 pump size	排量 (mL/r) displacement	辅助泵排量 (mL/r) gear pump displacement		压力 pressure (MPa)		自启动最大速度 (r/min) max self priming speed (r/min)	最大输入扭矩 (N.M) max input torque (N.M)	适用机重 (Ton) Applicable Vehicle Mass (Ton)
		摆线齿轮泵 gear pump 1	齿轮泵 gear pump 2	额定压力 rated	最高压力 peak			
I3V2-28N	2x27.5	5.5	16	21.6	24.5	2600	137.3	6~7

## 外形尺寸

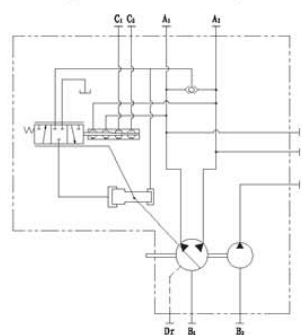
Dimensions



## 出油口尺寸 delivery port



## 液压原理图 Hydraulic Principle



## 外花键输入参数

Dimensions of shaft end

型号 type	齿数 no. of teeth	径节 diametral pitch	压力角 pressure angle	齿顶圆直径 major diameter	齿根圆直径 base diameter	跨棒距 min measurement over two pins	量棒直径 pin diameter	花键标准 involute spline rule
I3V2-36N	15	16/32	30°	Φ24.98 <sup>+0.13</sup> <sub>-0.13</sub>	Φ21.5 <sup>+0.13</sup> <sub>-0.13</sub>	28.228	3.048	ANSI B92.1-1970

## 主要性能参数

Main Specifications

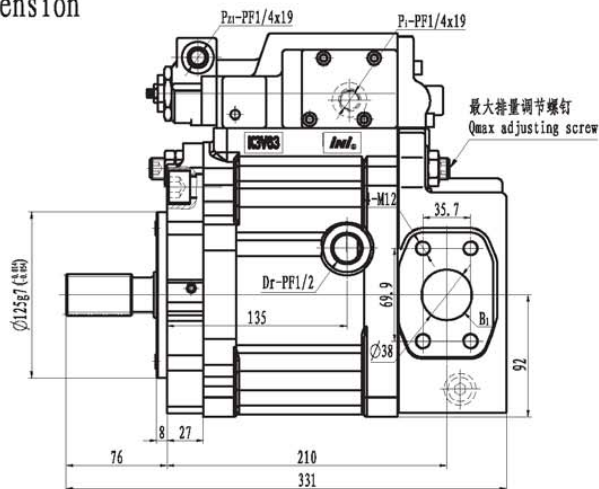
型号 pump size	排量 (mL/r) displacement	压力 pressure (MPa) 额定 rated 最高 peak	转速 speed (r/min) 额定 rated 最高 peak	辅助泵排量 (mL/r) gear pump displacement	辅助泵压力 (MPa) gear pump pressure	辅助泵转速 (r/min) gear pump speed	转向 direction of rotation	适用机重 (Ton) Applicable Vehicle Mass (Ton)
I3V2-36N	2x36	29.4 31.4	2000 2300	10、12.5、14 16、19.2、20 23、25、26.5 30、32	20 25	400 2500 3000	从轴端看顺时针 clockwise (viewed from shaft end)	8

注: (1) 主泵排量可变, 最大排量可根据用户需求设定。  
(2) 配套齿轮泵可根据用户需求做出更改。

NOTE: (1) main pump displacement is variable, it can be set according to customer's need.  
(2) gear pump style can be change according to customer's need.

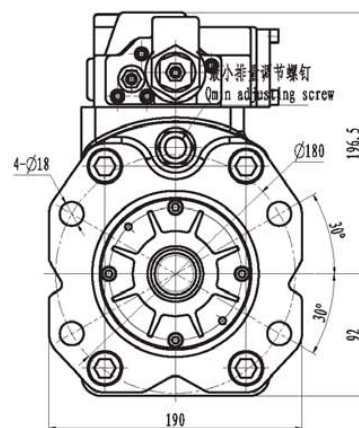


## 外形尺寸 Dimension

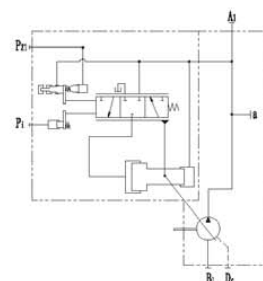
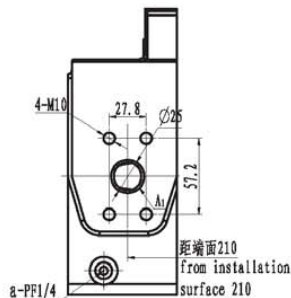
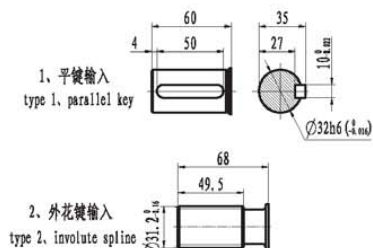


输入型式  
Type of shaft end

出口尺寸  
delivery port



液压原理图  
Hydraulic Principle



## 渐开线外花键输入参数

Dimensions of involute spline shaft end

型号 type	齿数 no. of teeth	径节 diametral pitch	压力角 pressure angle	齿顶圆直径 major diameter	齿根圆直径 base diameter	跨棒距 min measurement over two pins	量棒直径 pin diameter	花键标准 involute spline rule
I3V63-1IN	14	12/24	30°	$\phi 31.2_{-0.16}^{+0}$	$\phi 27_{-0.16}^{+0}$	34.406	3.6	ANSI B92.1-1970

## 主要性能参数

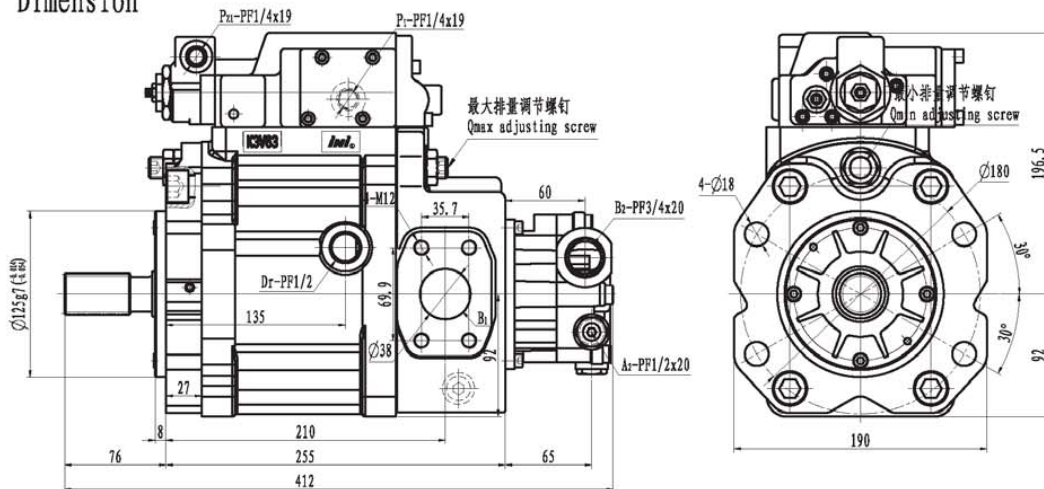
Main Specifications

型号 pump size	排量 (mL/r) displacement	压力 pressure (MPa)		最高转速 peak speed (r/min)		转向 direction of rotation 从轴端看顺时针 (或逆时针) clockwise or counter clockwise (viewed from shaft end)	适用机重 (Ton) Applicable Vehicle Mass (Ton)
		额定 rated	最高 peak	最低转速 min speed	最高 peak		
I3V63-1IN	63	31.4	34.3	2650	3250		12~15

注：主泵排量在20~63范围内可变，最大排量可根据用户需求设定。

NOTE: main pump displacement is variable, it can be set according to customer's need.

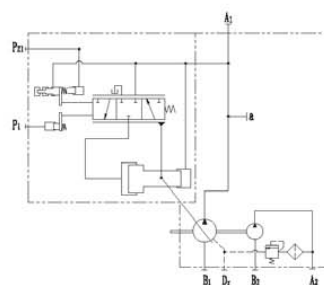
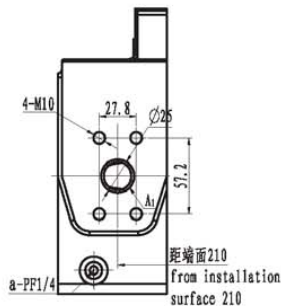
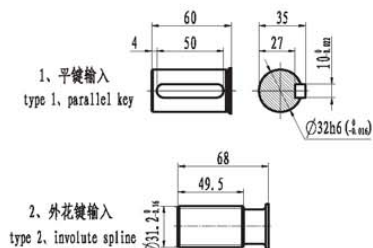
外形尺寸  
Dimension



输入型式  
Type of shaft end

出口尺寸  
delivery port

液压原理图  
Hydraulic Principle



渐开线外花键输入参数

Dimensions of involute spline shaft end

型号 type	齿数 no. of teeth	径节 diametral pitch	压力角 pressure angle	齿顶圆直径 major diameter	齿根圆直径 base diameter	跨棒距 min measurement over two pins	量棒直径 pin diameter	花键标准 involute spline rule
I3V63-1IN	14	12/24	30°	Φ31.2 <sup>+0.16</sup> <sub>-0.16</sub>	Φ27 <sup>+0.16</sup> <sub>-0.16</sub>	34.406	3.6	ANSI B92.1-1970

主要性能参数

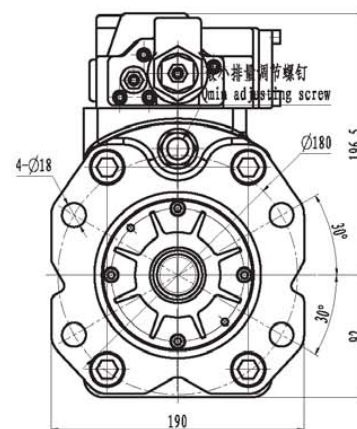
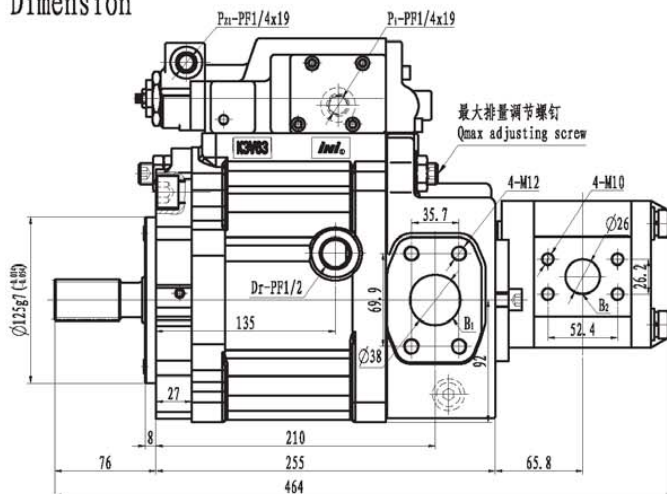
Main Specifications

型 号 pump size	排量 (mL/r) displacement	压力 pressure (MPa)		最高转速 peak speed (r/min)		辅助泵排量 (mL/r) gear pump displacement	辅助泵额定压力 (MPa) gear pump rated pressure	辅助泵额定转速 (r/min) gear pump rated speed	转 向 direction of rotation	适用机重 (Ton) Applicable Vehicle Mass (Ton)
		额定 rated	最高 peak	额定 rated max self rating	最高 peak					
I3V63-1IN	63	31.4	34.3	2650	3250	12	5	3250	从轴端看顺时针 clockwise (viewed from shaft end)	12 ~ 15

注：主系排量在20~63范围内可变，最大排量可根据用户需求设定。

NOTE: main pump displacement is variable, it can be set according to customer's need.

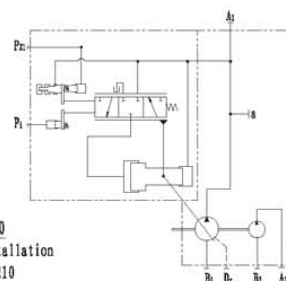
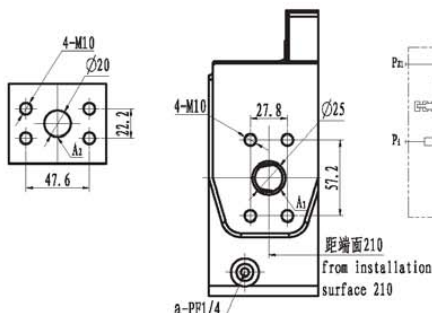
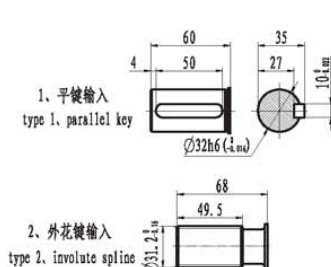
外形尺寸  
Dimension



输入型式  
Type of shaft end

出油口尺寸  
delivery port

液压原理图  
Hydraulic Principle



渐开线外花键输入参数

Dimensions of involute spline shaft end

型号 type	齿数 no. of teeth	径节 diametral pitch	压力角 pressure angle	齿顶圆直径 major diameter	齿根圆直径 base diameter	跨棒距 min measurement over two pins	量棒直径 pin diameter	花键标准 involute spline rule
I3V63-1IN	14	12/24	30°	$\Phi 31.2_{-0.16}^0$	$\Phi 27_{-0.16}^0$	34.406	3.6	ANSI B92.1-1970

主要性能参数

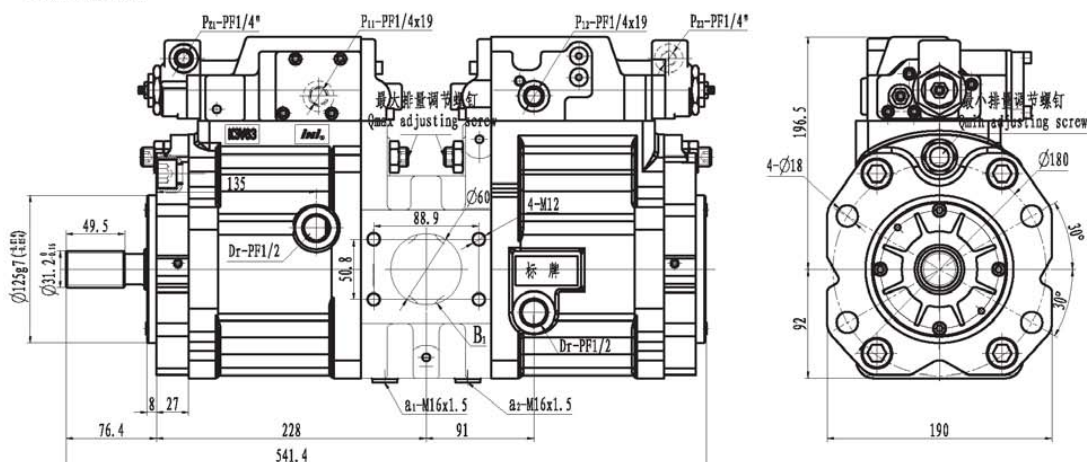
Main Specifications

型号 pump size	排量 (mL/r) displacement	压力 pressure (MPa) 额定 rated 最高 peak	最高转速 peak speed (r/min) 额定 rated 最高 peak	辅助泵排量 (mL/r) gear pump displacement	辅助泵压力 (MPa) gear pump pressure	辅助泵转速 (r/min) gear pump speed	转向 direction of rotation	适用机重 (Ton) Applicable Vehicle Mass (Ton)
I3V63-1IN	63	31.4 34.3	2650 3250	10, 12.5, 14, 16, 19.2, 20, 23, 25, 26.5, 30, 32	20 25	400 2500 3000	从驱动轴看顺时针 (逆时针) clockwise or counter clockwise (viewed from shaft end)	12~15

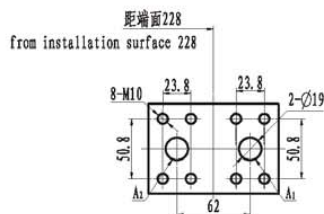
注: (1) 主泵排量在20~63范围内可变, 最大排量可根据用户需求设定。 NT08: (1) main pump displacement is variable, it can be set according to customer's need.  
(2) 配套齿轮泵可根据用户需求做出更改。 (2) gear pump style can be change according to customer's need.



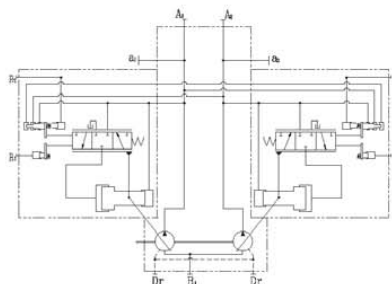
外形尺寸  
Dimension



出油口尺寸  
delivery port



Hydraulic Principle



### 外花键输入参数

Dimensions of shaft end

型号 type	齿数 no. of teeth	径节 diametral pitch	压力角 pressure angle	齿顶圆直径 major diameter	齿根圆直径 base diameter	跨棒距 min measurement over two pins	量棒直径 pin diameter	花键标准 involute spline rule
I3V63-2IN	14	12/24	30°	$\phi 31.2^{+0}_{-0.16}$	$\phi 27^{+0}_{-0.16}$	34.406	3.6	ANSI B92.1-1970

### 主要性能参数

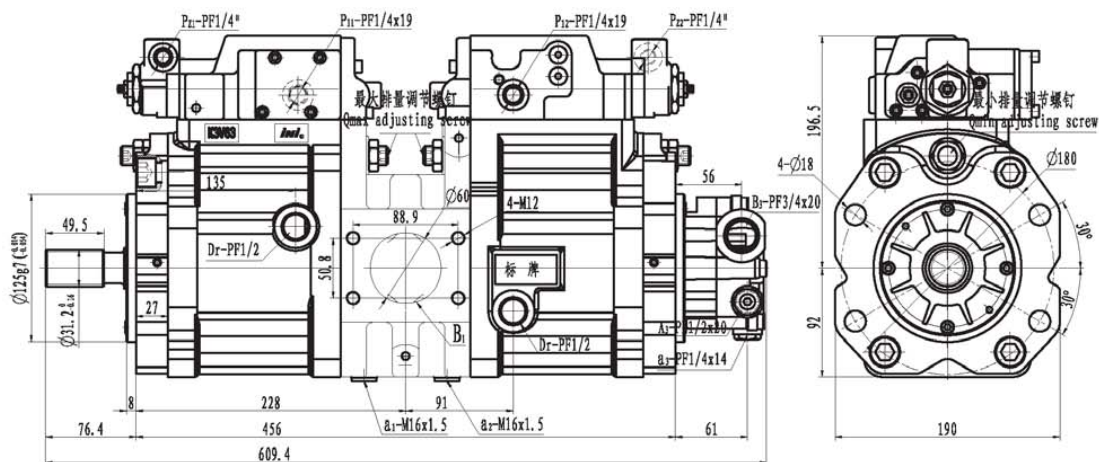
### Main Specifications

型 号 pump size	排量(ml/r) displacement	压 力 pressure (MPa)		最高转速 peak speed (r/min)		转 向 direction of rotation	适用机重(Ton) Applicable Vehicle Mass (Ton)
		额 定 rated	最 高 peak	自吸最高 max self-priming	最 高 peak		
I3V63-2IN	2x63	31.4	34.3	2650	3250	从轴端看顺时针 clockwise (viewed from shaft end)	12~15

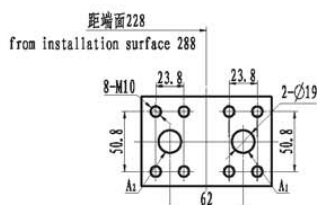
注:主泵排量在20~63范围内可变,最大排量可根据用户需求设定。

NTOE: main pump displacement is variable ,it can be set according to customer's need.

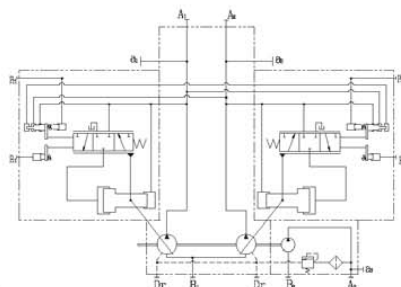
外形尺寸  
Dimension



出油口尺寸  
delivery port



液压原理图  
Hydraulic Principle



### 外花键输入参数

### Dimensions of shaft end

型号 type	齿数 no. of teeth	径节 diametral pitch	压力角 pressure angle	齿顶圆直径 major diameter	齿根圆直径 base diameter	跨棒距 min measurement over two pins	量棒直径 pin diameter	花键标准 involute spline rule
I3V63-2IN	14	12/24	30°	$\phi 31.2^{+0}_{-0.16}$	$\phi 27^{+0}_{-0.16}$	34.406	3.6	ANSI B92.1-1970

### 主要性能参数

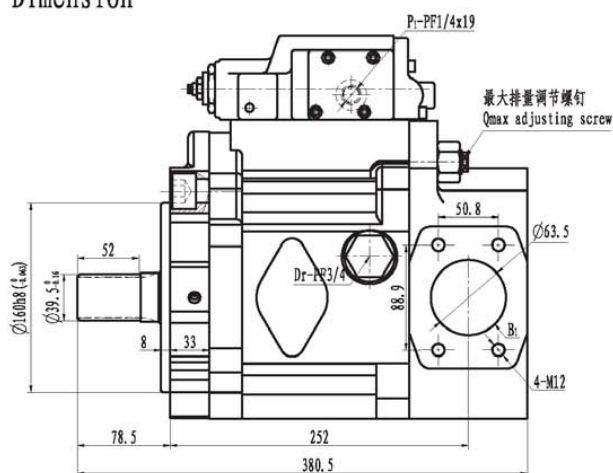
### Main Specifications

型 号	排量 (mL/r)	压力 pressure (MPa)		最高转速 peak speed (r/min)		辅助泵排量 (mL/r)	辅助泵额定压力 (MPa)	辅助泵额定转速 (r/min)	转 向	适用机重 (Ton)
pump size	displacement	额定 rated	最高 peak	最高 peak max oil rating		gear pump displacement	gear pump rated pressure	gear pump rated speed	direction of rotation	Applicable Vehicle Mass (Ton)
I3V63-2IN	2x63	31.4	34.3	2650	3250	12	5	3250	从轴端看顺时针 clockwise (viewed from shaft end)	12 ~ 15

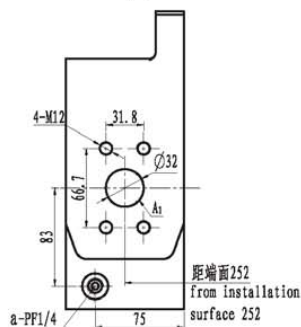
注:主泵排量在20~63范围内可变,最大排量可根据用户需求设定。

NTOR: main pump displacement is variable, it can be set according to customer's need.

## 外形尺寸 Dimension



出油口尺寸  
delivery port



外花键输入参数  
Dimensions of shaft end

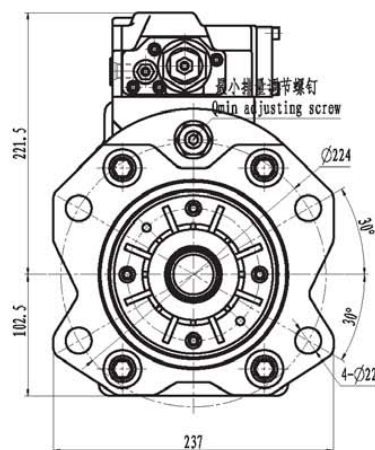
型号 type	齿数 no. of teeth	模数 module	压力角 pressure angle	齿顶圆直径 major diameter	齿根圆直径 minor diameter	公法线长度 base tangent length	跨测齿数 Number of teeth spanned for base tangent length	花键标准 involute spline rule
I3V112-1IN	14	2.5	20°	$\phi 39.5^{+0.16}_{-0.16}$	$\phi 34^{+0.16}_{-0.16}$	20.309 $^{+0.052}_{-0.118}$	3	JIS D 2001

主要性能参数  
Main Specifications

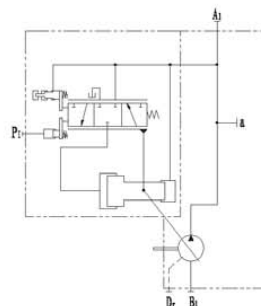
型号 pump size	排量 (mL/r) displacement	压力 pressure (MPa)		最高转速 peak speed (r/min)		转向 direction of rotation 从轴端看顺时针 (或逆时针) clockwise or counter clockwise (viewed from shaft end)	适用机重 (Ton) Applicable Vehicle Mass (Ton)
		额定 rated	最高 peak	自吸转速 max self priming	最高 peak		
I3V112-1IN	112	31.4	34.3	2360	2700		25

注: 主泵排量在20~116范围内可变, 最大排量可根据用户需求设定。

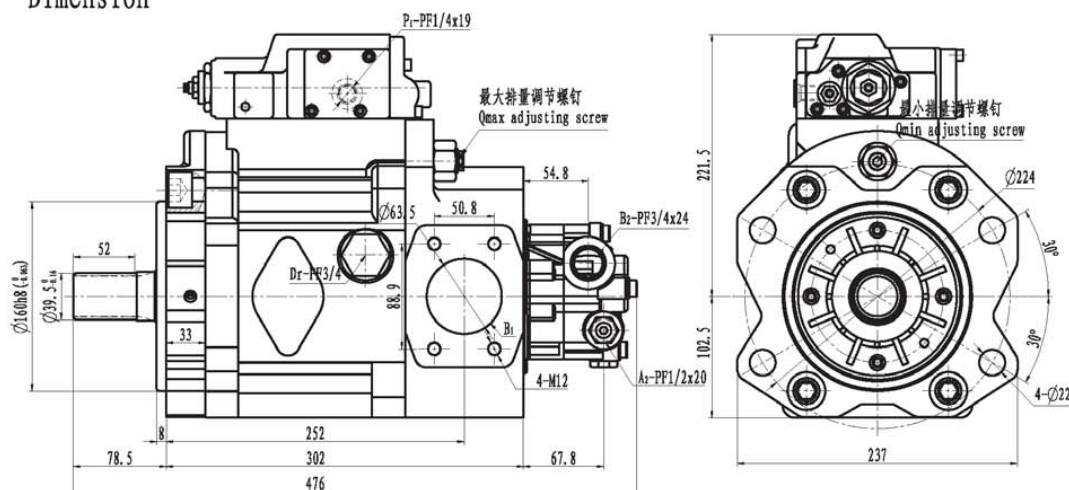
NOTE: main pump displacement is variable, it can be set according to customer's need.



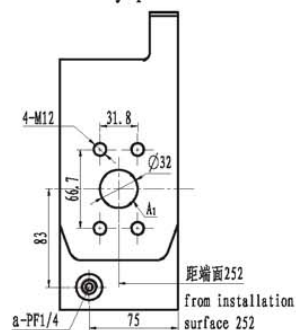
液压原理图  
Hydraulic Principle



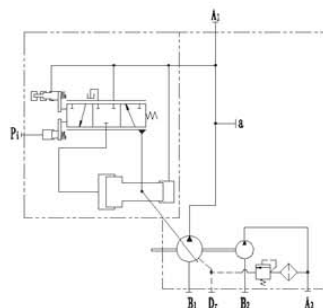
## 外形尺寸 Dimension



## 出油口尺寸 delivery port



## 液压原理图 Hydraulic Principle



## 外花键输入参数 Dimensions of shaft end

型号 type	齿数 no. of teeth	模数 module	压力角 pressure angle	齿顶圆直径 major diameter	齿根圆直径 minor diameter	公法线长度 base tangent length	跨测齿数 Number of teeth spanned for base tangent length	花键标准 involute spline rule
I3V112-1IN	14	2.5	20°	Φ39.5 <sup>+0.16</sup> <sub>-0.16</sub>	Φ34 <sup>+0.16</sup> <sub>-0.16</sub>	20.309 <sup>+0.052</sup> <sub>-0.118</sub>	3	JIS D 2001

## 主要性能参数 Main Specifications

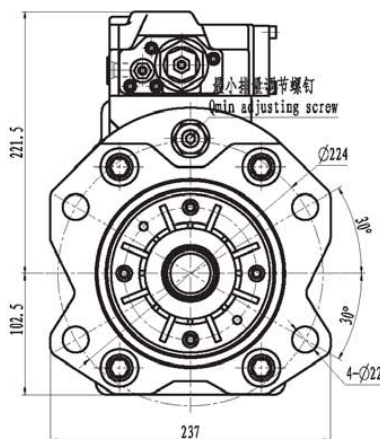
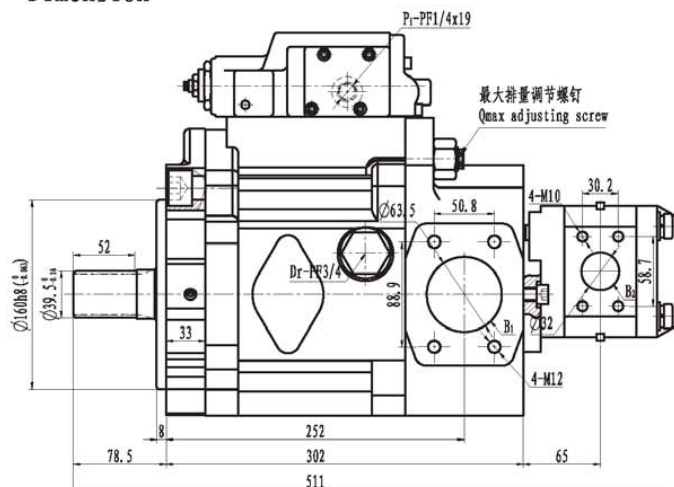
型号 pump size	排量 (mL/r) displacement	压力 pressure (MPa)		最高转速 peak speed (r/min)		辅助泵排量 (mL/r) gear pump displacement	辅助泵额定压力 (MPa) gear pump rated pressure	辅助泵额定转速 (r/min) gear pump rated speed	转向 direction of rotation 从轴端看顺时针 clockwise (viewed from shaft end)	适用机重 (Ton) Applicable Vehicle Mass (Ton)
		额定 rated	最高 peak	额定 rated	最高 peak					
I3V112-1IN	112	31.4	34.3	2360	2700	15	5	2500		25

注：主泵排量在20~116范围内可变，最大排量可根据用户需求设定。

NOTE: main pump displacement is variable, it can be set according to customer's need.

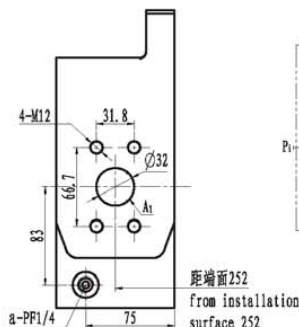
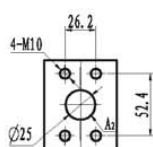


# 外形尺寸 Dimension

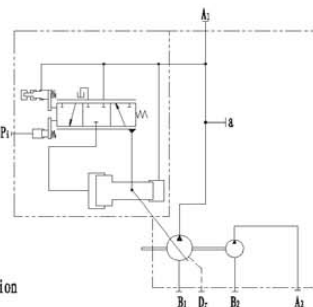


## 出口口尺寸 delivery port

## 辅泵出口口尺寸 gear pump delivery port



## 液压原理图 Hydraulic Principle



## 外花键输入参数 Dimensions of shaft end

型号 type	齿数 no. of teeth	模数 module	压力角 pressure angle	齿顶圆直径 major diameter	齿根圆直径 minor diameter	公法线长度 base tangent length	跨测齿数 Number of teeth spanned for base tangent length	花键标准 involute spline rule
I3V112-1IN	14	2.5	20°	Ø39.5 <sup>+0.16</sup> <sub>-0.16</sub>	Ø34 <sup>+0.16</sup> <sub>-0.16</sub>	20.309 <sup>+0.052</sup> <sub>-0.118</sub>	3	JIS D 2001

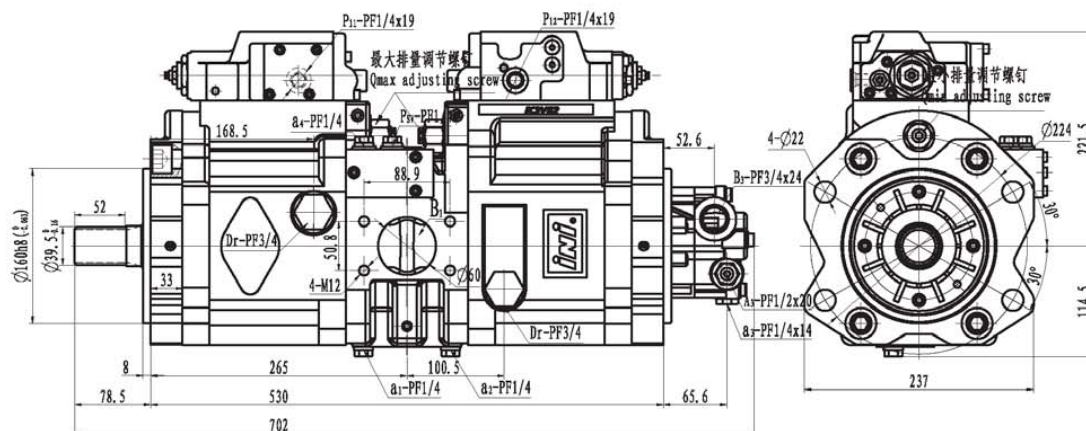
## 主要性能参数

### Main Specifications

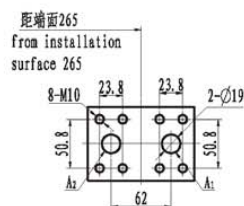
型号 pump size	排量(mL/r) displacement	压力 pressure (MPa)		最高转速peak speed (r/min)		辅助泵排量 (mL/r)		辅助泵压力(MPa)		辅助泵转速 (r/min)		转 向 direction of rotation	适用机重 (Ton) Applicable Vehicle Mass (Ton)	
		额定 rated	最高 peak	额定 rated	最高 peak	额定 rated	最高 peak	额定 rated	最高 peak	最低 min	额定 rated			最高 peak
I3V112-1IN	112	31.4	34.3	2360	2700	27						从轴端看顺时针 (逆时针) clockwise or counter clockwise (viewed from shaft end)	25	
						32		25	30					
						36				400	2500			3000
						40		20	25					
						44								

注: (1) 主泵排量在20~112范围内可变, 最大排量可根据用户需求设定。NTOR: (1) main pump displacement is variable, it can be set according to customer's need.  
(2) 配套齿轮泵可根据用户需求做出更改。(2) gear pump style can be change according to customer's need.

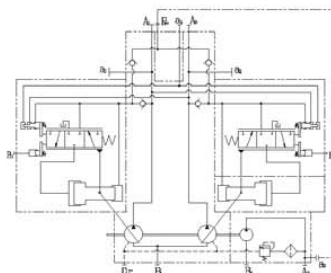
## 外形尺寸 Dimension



## 出口尺寸 delivery port



## 液压原理图 Hydraulic Principle



## 外花键输入参数 Dimensions of shaft end

型号 type	齿数 no. of teeth	模数 module	压力角 pressure angle	齿顶圆直径 major diameter	齿根圆直径 minor diameter	公法线长度 base tangent length	跨测齿数 Number of teeth spanned for base tangent length	花键标准 involute spline rule
I3V112-2IN	14	2.5	20°	$\phi 39.5^{+0.16}_{-0.16}$	$\phi 34^{+0.16}_{-0.16}$	20.309 $^{+0.052}_{-0.118}$	3	JIS D 2001

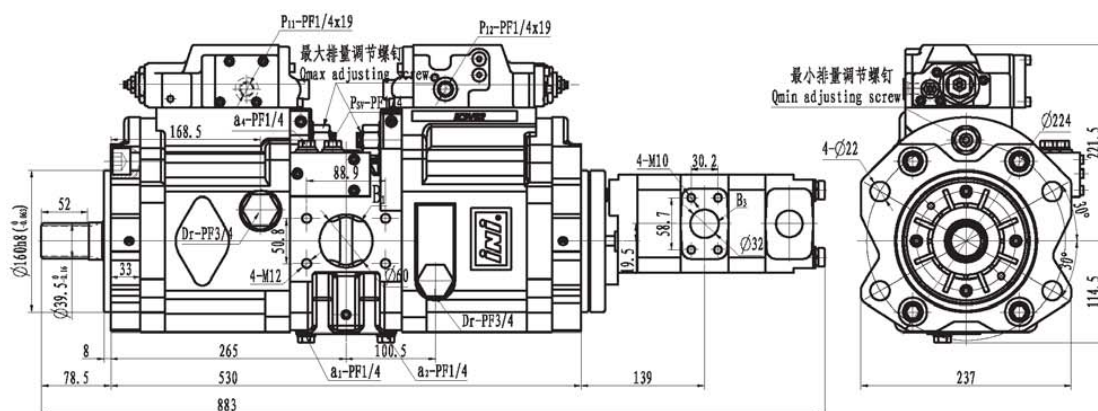
## 主要性能参数 Main Specifications

型号 pump size	排量 (mL/r) displacement	压力 pressure (MPa)		最高转速 peak speed (r/min)		辅助泵排量 (mL/r) gear pump displacement	辅助泵额定压力 (MPa) gear pump rated pressure	辅助泵额定转速 (r/min) gear pump rated speed	转向 direction of rotation 从轴端看顺时针 clockwise (viewed from shaft end)	适用机重 (Ton) Applicable Vehicle Mass (Ton)
		额定 rated	最高 peak	额定 rated	最高 peak					
I3V112-2IN	2x112	31.4	34.3	2360	2700	15	5	2500		25

注：主泵排量在20~116范围内可变，最大排量可根据用户需求设定。

NOTE: main pump displacement is variable, it can be set according to customer's need.

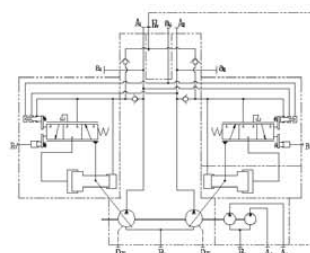
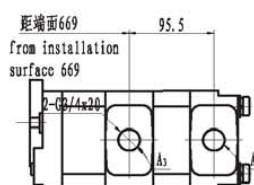
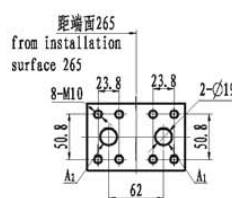
## 外形尺寸 Dimension



主泵出油口尺寸  
main pump delivery port

辅泵出油口尺寸  
gear pump delivery port

液压原理图  
Hydraulic Principle



## 外花键输入参数 Dimensions of shaft end

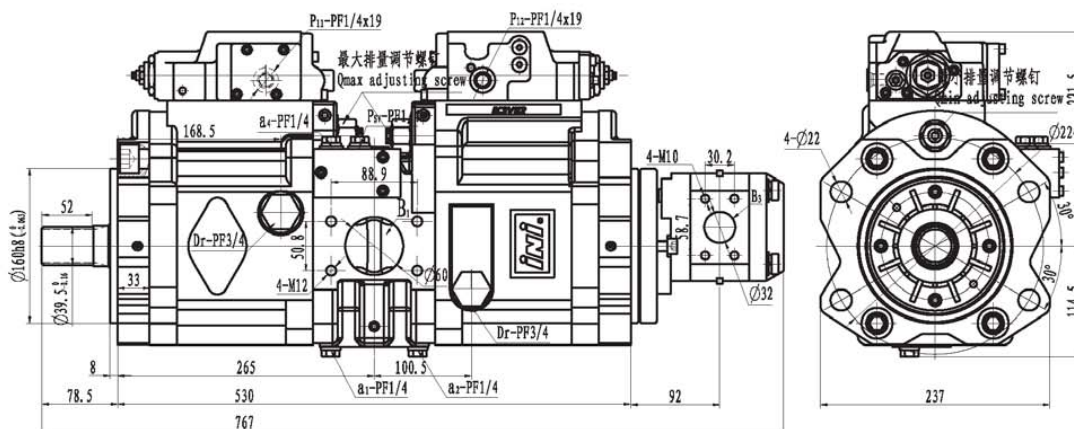
型号 type	齿数 no. of teeth	模数 module	压力角 pressure angle	齿顶圆直径 major diameter	齿根圆直径 minor diameter	公法线长度 base tangent length	跨测齿数 Number of teeth spanned for base tangent length	花键标准 involute spline rule
I3V112-2IN	14	2.5	20°	φ39.5 <sup>+0.16</sup> <sub>-0.16</sub>	φ34 <sup>+0.16</sup> <sub>-0.16</sub>	20.309 <sup>+0.052</sup> <sub>-0.118</sub>	3	JIS D 2001

## 主要性能参数 Main Specifications

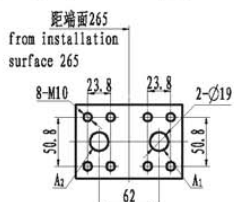
型号	排量 (mL/r)	压力 pressure (MPa)		最高转速 peak speed (r/min)		辅助泵排量 (mL/r)		辅助泵压力 (MPa)		辅助泵转速 (r/min)		转向	适用机重 (Ton)	
pump size	displacement	额定 rated	最高 peak	额定 rated	最高 peak	前 front	后 rear	额定 rated	最高 peak	最低 min	额定 rated	最高 peak	direction of rotation	Applicable Vehicle Mass (Ton)
I3V112-2IN	2x112	31.4	34.3	2360	2700	32	25	25	28	600	2000	2500	从轴端看顺时针 clockwise (viewed from shaft end)	25
						32	32							
						40	20							
						40	32							

注: (1) 主泵排量在20~112范围内可变, 最大排量可根据用户需求设定。 NT08: (1) main pump displacement is variable, it can be set according to customer's need.  
(2) 配套齿轮泵可根据用户需求做出更改。 (2) gear pump style can be change according to customer's need.

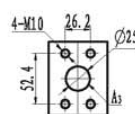
外形尺寸  
Dimension



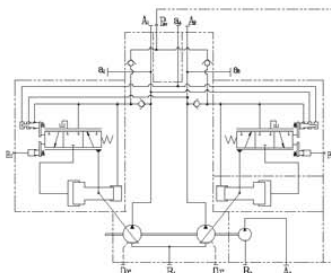
辅泵出口尺寸  
gear pump delivery port



出油口尺寸  
delivery port



液压原理图  
Hydraulic Principle



外花键输入参数  
Dimensions of shaft end

型号 type	齿数 no. of teeth	模数 module	压力角 pressure angle	齿顶圆直径 major diameter	齿根圆直径 minor diameter	公法线长度 base tangent length	跨测齿数 Number of teeth spanned for base tangent length	花键标准 involute spline rule
I3V112-2IN	14	2.5	20°	Φ39.5 <sup>+0.16</sup> <sub>-0.16</sub>	Φ34 <sup>+0.16</sup> <sub>-0.16</sub>	20.309 <sup>+0.052</sup> <sub>-0.118</sub>	3	JIS D 2001

主要性能参数  
Main Specifications

型号	排量 (mL/r)	压力 pressure (MPa)		最高转速 peak speed (r/min)		辅助泵排量 (mL/r)	辅助泵压力 (MPa)		辅助泵转速 (r/min)		转向	适用机重 (Ton)	
pump size	displacement	额定 rated	最高 peak	额定 rated	最高 peak	gear pump displacement	额定 rated	最高 peak	最低 min	额定 rated	最高 peak	direction of rotation	Applicable Vehicle Mass (Ton)
I3V112-2IN	2x112	31.4	34.3	2360	2700	27	25	30	400	2500	3000	从轴端看顺时针 clockwise (viewed from shaft end)	25
						32							
						36							
						40	20	25					
						44							

注: (1) 主泵排量在20~112范围内可变, 最大排量可根据用户需求设定。 NTOE: (1) main pump displacement is variable, it can be set according to customer's need.  
(2) 配套齿轮泵可根据用户需求做出更改。 (2) gear pump style can be change according to customer's need.