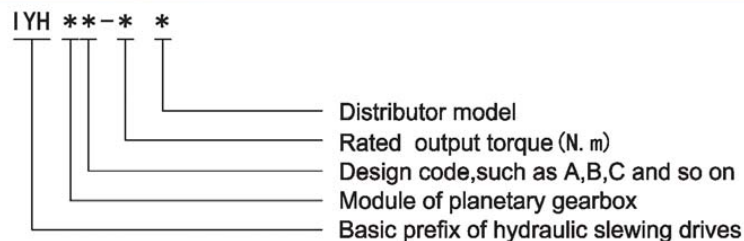


IYH series hydraulic slewing drives

1. Brief introduction

IYH series hydraulic slewing drives are self-developed with independent intellectual property rights. And they are mainly consist of hydraulic motor, multi-disc hydraulic brake, C type planetary gearbox and distributor. hydraulic motor can choose different distributor according to the working conditions, such as counterbalance valve, overload valve, shuttle valve, speed control directional valve and other function's valve. This series hydraulic slewing drives featured compact and elegant figure, small size and light weight, and a high efficiency and power, low noise and good operating performance. Therefore, the series hydraulic slewing drives have been widely used in mobile crane, vehicle crane, aerial platform, tracked vehicle and so on. IYH series hydraulic slewing drives have been well sold in China company such as SANY, and also have been exported to the USA, Japan, Australia, Russia, Austria, Netherlands, Indonesia, Korea and other areas in the world.

2. Model options

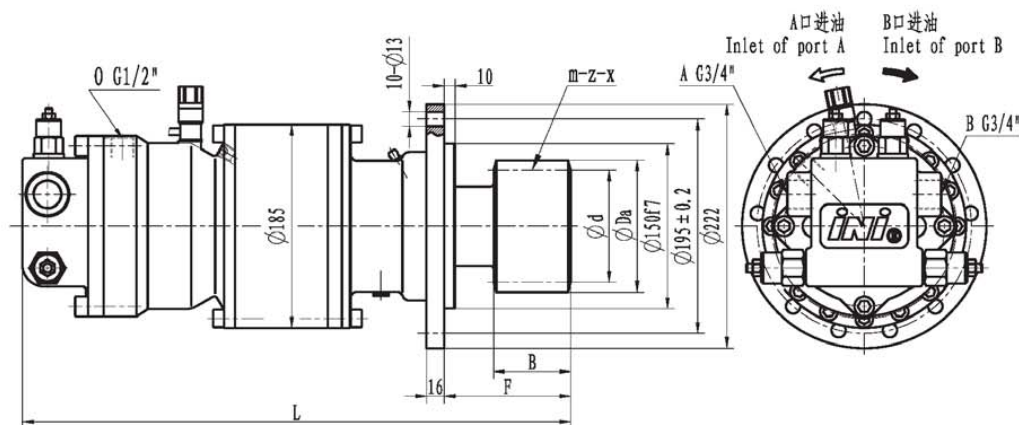


3. Options example

IYH22A-1500D120221 represents that the hydraulic slewing drives adopts two levels planetary gearbox, and the modules of the gearbox are 2 and 2 respectively, the design code is A, the rated output torque is 1500N.m, distributor model is D120221.

4. Parameter description

- Total displacement represents the capacity of oil supply per revolution.
- Flow of oil supply indicates theoretical flow of pump when the volumetric efficiency is considered as 90%-94%.



回转主要技术性能参数

Main specification

型号 Model	额定输出扭矩 Rated torque (N.m)	额定输出转速 Rated Speed (r/min)	总排量 Total displacement (ml/r)	额定压力 System Rated pressure (MPa)	供油流量 Supply oil flow (L/min)	液压马达型号 Hydraulic motor	减速器型号 (传动比) Gearbox model (Ratio)
IYH22A-1500D120221	1500	0-12	2857.5	6	40	BM5-125D120221	C22 (i=22.86)
IYH22A-2000D120221	2000	0-12	2857.5	7			
IYH22A-2500D120221	2500	0-12	2857.5	9			
IYH22A-3000D120221	3000	0-12	2857.5	11			

回转输出齿轮外形图尺寸

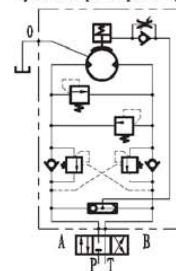
Gear drawing

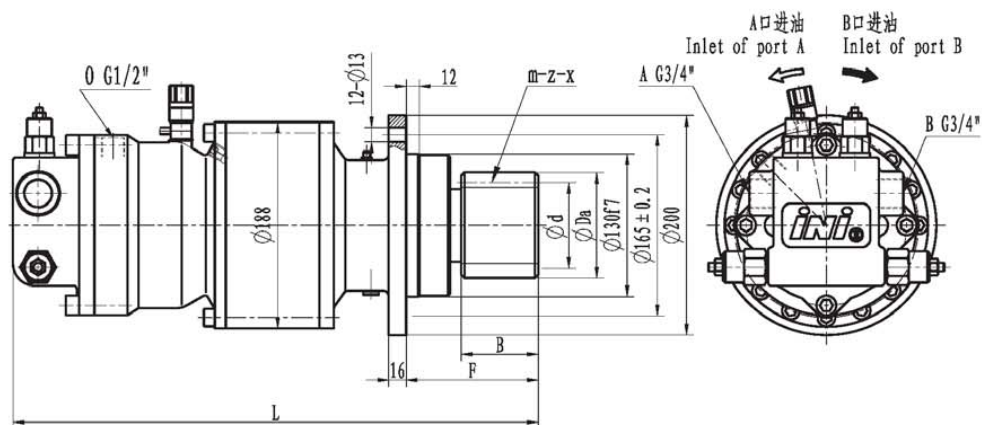
模数 Module (m)	齿数 Teeth (z)	变位系数 Shife coefficient (x)	分度圆 Reference diameter (φd)	齿顶圆 Tip diameter (φDa)	齿轮宽度 Facewidth (B)	F	L
6	17	0.5	102	118.8	60	105	489
8	11	0.5	88	111	88	133	517
8	17	0.5	136	158.4	88	133	517
10	13	0.5	130	160	90	135	519

- 备注: 1、小齿轮的选用必须考虑输出扭矩的大小,以保住齿轮和传动轴的强度;
2、配流器的选用应参照系统允许供油量的大小,上述配流器和小齿轮仅为常用形式;
3、公司可根据客户需要提供各种规格形式的回转装置,详情请与本公司联系。

- Note: 1.The selection of pinion should refer to output torque to obtain the strength of drive elements;
2.The distribute can be supplied with a wide range of pressure and flow value,aboved is standard type;
3.The company can supply a wide range of slew drive according to customer requirement.Please contact us for the details.

液压原理图
Hydraulic principle diagram





回转主要技术性能参数

Main specification

型号 Model	额定输出扭矩 Rated torque (N.m)	额定输出转速 Rated Speed (r/min)	总排量 Total displacement (ml/r)	额定压力 System Rated pressure (MPa)	供油流量 Supply oil flow (L/min)	液压马达型号 Hydraulic motor	减速器型号 (传动比) Gearbox model (Ratio)
IYH22B-1500D120221	1500	0-12	2857.5	6	40	BM5-125D120221	C22 (i=22.86)
IYH22B-2000D120221	2000	0-12	2857.5	7			
IYH22B-2500D120221	2500	0-12	2857.5	9			
IYH22B-3000D120221	3000	0-12	2857.5	11			

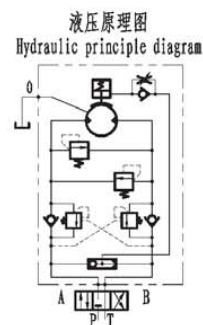
回转输出齿轮外形图尺寸

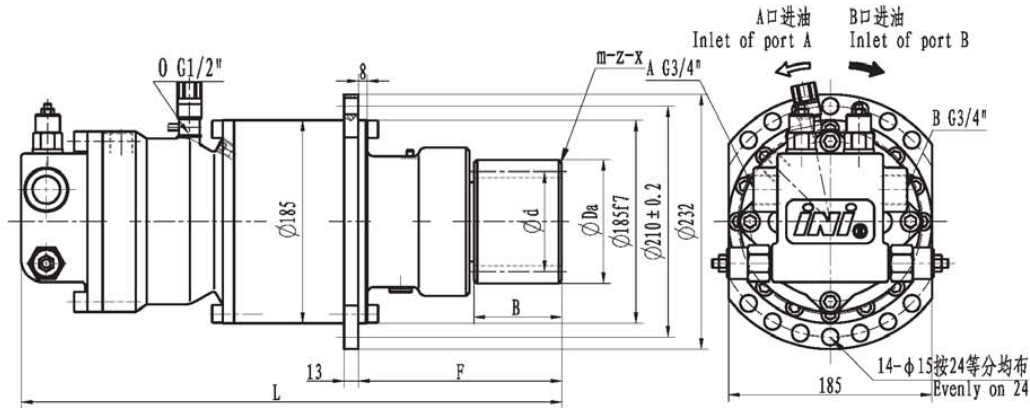
Gear drawing

模数 Module (m)	齿数 Teeth (z)	变位系数 Shife coefficient (x)	分度圆 Reference diameter (Ød)	齿顶圆 Tip diameter (ØDa)	齿轮宽度 Facewidth (B)	F	L
6	17	0.5	102	118.8	60	110	478
8	11	0.5	88	111	88	138	506
8	17	0.5	136	158.4	88	138	506
10	13	0.5	130	160	90	140	508

- 备注: 1、小齿轮的选用必须考虑输出扭矩的大小, 以保住齿轮和传动轴的强度;
2、配流器的选用应参照系统允许供油量的大小, 上述配流器和小齿轮仅为常用形式;
3、公司可根据客户提供各种规格形式的回转装置, 详情请与本公司联系。

- Note: 1. The selection of pinion should refer to output torque to obtain the strength of drive elements;
2. The distribute can be supplied with a wide range of pressure and flow value, aboved is standard type;
3. The company can supply a wide range of slew drive according to customer requirement. Please contact us for the details.





回转主要技术性能参数

Main specification

型号 Model	额定输出扭矩 Rated torque (N.m)	额定输出转速 Rated Speed (r/min)	总排量 Total displacement (ml/r)	额定压力 System Rated pressure (MPa)	供油流量 Supply oil flow (L/min)	液压马达型号 Hydraulic motor	减速器型号 (传动比) Gearbox model (Ratio)
IYH22C-1500D120221	1500	0-12	2857.5	6	40	BM5-125D120221	C22 (i=22.86)
IYH22C-2000D120221	2000	0-12	2857.5	7			
IYH22C-2500D120221	2500	0-12	2857.5	9			
IYH22C-3000D120221	3000	0-12	2857.5	11			

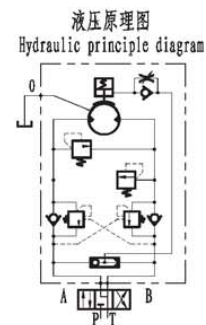
回转输出齿轮外形图尺寸

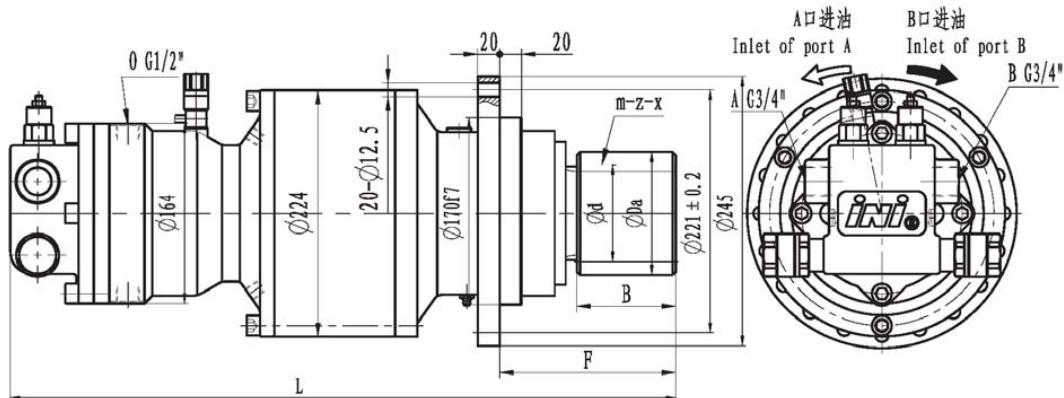
Gear drawing

模数 Module (m)	齿数 Teeth (z)	变位系数 Shife coefficient (x)	分度圆 Reference diameter (ϕd)	齿顶圆 Tip diameter (ϕDa)	齿轮宽度 Facewidth (B)	F	L
6	17	0.5	102	118.8	60	165	492
8	11	0.5	88	111	88	193	520
8	17	0.5	136	158.4	88	193	520
10	13	0.5	130	160	90	195	522

- 备注: 1、小齿轮的选用必须考虑输出扭矩的大小,以保住齿轮和传动轴的强度;
2、配流器的选用应参照系统允许供油量的大小,上述配流器和小齿轮仅为常用形式;
3、公司可根据客户需要提供各种规格形式的回转装置,详情请与本公司联系。

- Note: 1.The selection of pinion should refer to output torque to obtain the strength of drive elements;
2.The distribute can be supplied with a wide range of pressure and flow value,aboved is standard type;
3.The company can supply a wide range of slew drive according to customer requirement.Please contact us for the details.





回转主要技术性能参数

Main specification

型号 Model	额定输出扭矩 Rated torque (N.m)	额定输出转速 Rated Speed (r/min)	总排量 Total displacement (ml/r)	额定压力 System Rated pressure (MPa)	供油流量 Supply oil flow (L/min)	液压马达型号 Hydraulic motor	减速器型号 (传动比) Gearbox model (Ratio)
IYH33A-4000D120221	4000	0-39	2325	14.5	100	BM5-125D120221	C33(i=18.6)
IYH33A-5000D120221	5000	0-30	2976	14.5	100	BM5-160D120221	
IYH33A-6000D120221	6000	0-20	3726	13.5	83	BM5-200D120221	
IYH33A-7000D120221	6600	0-15.5	3726	15	65	BM5-200D120221	

回转输出齿轮外形图尺寸

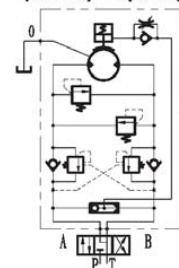
Gear drawing

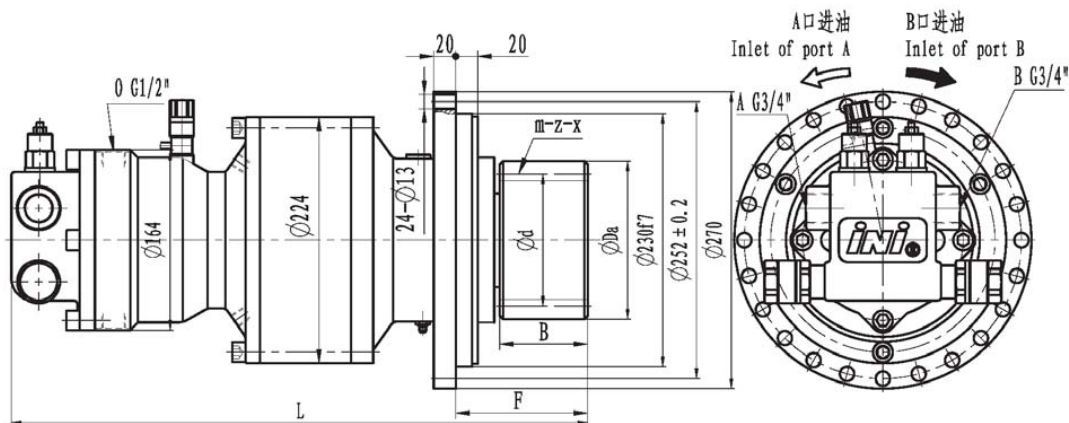
模数 Module (m)	齿数 Teeth (z)	变位系数 Shife coefficient (x)	分度圆 Reference diameter (ϕd)	齿顶圆 Tip diameter (ϕDa)	齿轮宽度 Facewidth (B)	F	L
8	11	0.5	88	112	90	160	605
8	15	0.5	120	144	90	160	605
10	12	0.5	120	149	90	160	605
10	13	0.5	130	159	90	160	605

- 备注: 1、小齿轮的选用必须考虑输出扭矩的大小,以保住齿轮和传动轴的强度;
2、配流器的选用应参照系统允许供油量的大小,上述配流器和小齿轮仅为常用形式;
3、公司可根据客户提供各种规格形式的回转装置,详情请与本公司联系。

- Note: 1.The selection of pinion should refer to output torque to obtain the strength of drive elements;
2.The distribute can be supplied with a wide range of pressure and flow value,aboved is standard type;
3.The company can supply a wide range of slew drive according to customer requirement.Please contact us for the details.

液压原理图
Hydraulic principle diagram





回转主要技术性能参数

Main specification

型号 Model	额定输出扭矩 Rated torque (N.m)	额定输出转速 Rated Speed (r/min)	总排量 Total displacement (ml/r)	额定压力 System Rated pressure (MPa)	供油流量 Supply oil flow (L/min)	液压马达型号 Hydraulic motor	减速器型号 (传动比) Gearbox model (Ratio)
IYH33B-4000D120221	4000	0-39	2325	14.5	100	BMS-125D120221	C33 (i=18.6)
IYH33B-5000D120221	5000	0-30	2976	14.5	100	BMS-160D120221	
IYH33B-6000D120221	6000	0-20	3726	13.5	83	BMS-200D120221	
IYH33B-7000D120221	6600	0-15.5	3726	15	65	BMS-200D120221	

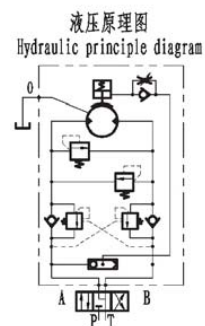
回转输出齿轮外形图尺寸

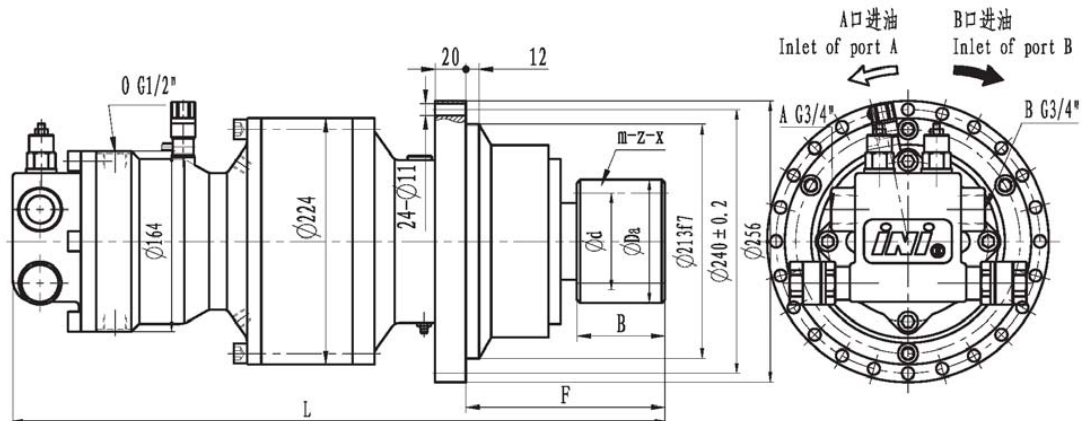
Gear drawing

模数 Module (m)	齿数 Teeth (z)	变位系数 Shife coefficient (x)	分度圆 Reference diameter (ϕd)	齿顶圆 Tip diameter (ϕDa)	齿轮宽度 Facewidth (B)	F	L
8	11	0.5	88	112	90	160	605
8	15	0.5	120	144	90	160	605
10	12	0.5	120	149	90	160	605
10	13	0.5	130	159	90	160	605

- 备注: 1、小齿轮的选用必须考虑输出扭矩的大小,以保住齿轮和传动轴的强度;
2、配流器的选用应参照系统允许供油量的大小,上述配流器和小齿轮仅为常用形式;
3、公司可根据客户需要提供各种规格形式的回转装置,详情请与本公司联系。

- Note: 1.The selection of pinion should refer to output torque to obtain the strength of drive elements;
2.The distribute can be supplied with a wide range of pressure and flow value,aboved is standard type;
3.The company can supply a wide range of slew drive according to customer requirement.Please contact us for the details.





回转主要技术性能参数

Main specification

型号 Model	额定输出扭矩 Rated torque (N.m)	额定输出转速 Rated Speed (r/min)	总排量 Total displacement (ml/r)	额定压力 System Rated pressure (MPa)	供油流量 Supply oil flow (L/min)	液压马达型号 Hydraulic motor	减速器型号 (传动比) Gearbox model (Ratio)
IYH33C-4000D120221	4000	0-39	2325	14.5	100	BM5-125D120221	C33(i=18.6)
IYH33C-5000D120221	5000	0-30	2976	14.5	100	BM5-160D120221	
IYH33C-6000D120221	6000	0-20	3726	13.5	83	BM5-200D120221	
IYH33C-7000D120221	6600	0-15.5	3726	15	65	BM5-200D120221	

回转输出齿轮外形图尺寸

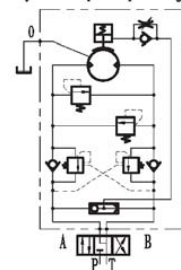
Gear drawing

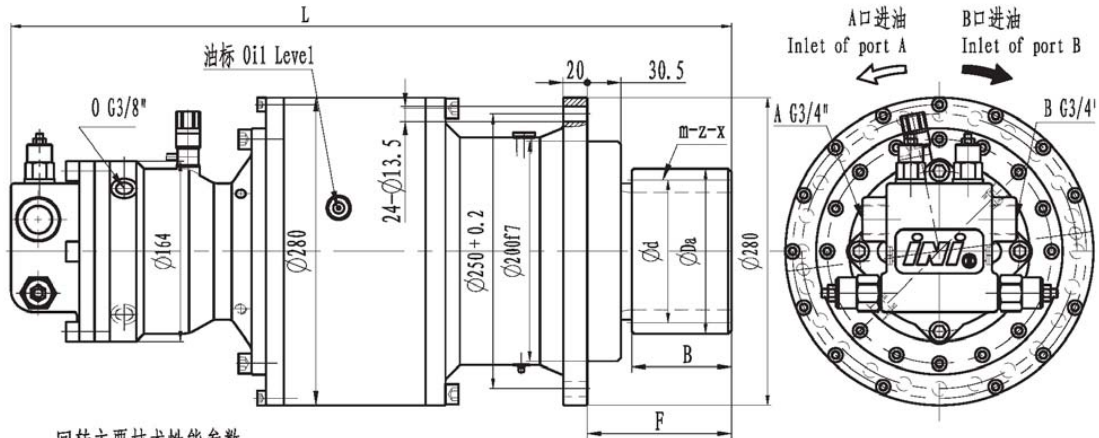
模数 Module (m)	齿数 Teeth (z)	变位系数 Shife coefficient (x)	分度圆 Reference diameter (φd)	齿顶圆 Tip diameter (φDa)	齿轮宽度 Facewidth (B)	F	L
8	11	0.5	88	112	90	160	605
8	15	0.5	120	144	90	160	605
10	12	0.5	120	149	90	160	605
10	13	0.5	130	159	90	160	605

- 备注: 1、小齿轮的选用必须考虑输出扭矩的大小,以保住齿轮和传动轴的强度;
2、配流器的选用应参照系统允许供油量的大小,上述配流器和小齿轮仅为常用形式;
3、公司可根据客户需要提供各种规格形式的回转装置,详情请与本公司联系。

- Note: 1.The selection of pinion should refer to output torque to obtain the strength of drive elements;
2.The distribute can be supplied with a wide range of pressure and flow value,aboved is standard type;
3.The company can supply a wide range of slew drive according to customer requirement.Please contact us for the details.

液压原理图
Hydraulic principle diagram





回转主要技术性能参数

Main specification

型号 Model	额定输出扭矩 Rated torque (N.m)	额定输出转速 Rated Speed (r/min)	总排量 Total displacement (ml/r)	额定压力 System Rated pressure (MPa)	供油流量 Supply oil flow (L/min)	液压马达型号 Hydraulic motor	减速器型号 (传动比) Gearbox model (Ratio)
IYH33D-7000D120221	7000	0-15	5296	12	87	BM5-160D120221	C33(i=33.1)
IYH33D-9000D120221	9000	0-15	5296	16	87	BM5-160D120221	
IYH33D-10000D120221	10000	0-8	6620	13	60	BM5-200D120221	
IYH33D-12000D120221	12000	0-8	6620	15	60	BM5-200D120221	

回转输出齿轮外形图尺寸

Gear drawing

模数 Module (m)	齿数 Teeth (z)	变位系数 Shife coefficient (x)	分度圆 Reference diameter (Ød)	齿顶圆 Tip diameter (ØDa)	齿轮宽度 Facewidth (B)	F	L
10	13	0.1	130	150	90	131	655
10	15	0.5	150	180	100	141	665
12	13	0.5	156	192	100	141	665
12	14	0.5	168	204	100	141	665

- 备注: 1、小齿轮的选用必须考虑输出扭矩的大小,以保住齿轮和传动轴的强度;
2、配流器的选用应参照系统允许供油量的大小,上述配流器和小齿轮仅为常用形式;
3、公司可根据客户需要提供各种规格形式的回转装置,详情请与本公司联系。

- Note: 1.The selection of pinion should refer to output torque to obtain the strength of drive elements;
2.The distribute can be supplied with a wide range of pressure and flow value,aboved is standard type;
3.The company can supply a wide range of slew drive according to customer requirement.Please contact us for the details.

液压原理图
Hydraulic principle diagram

