

● IMYJ series hydraulic friction winch

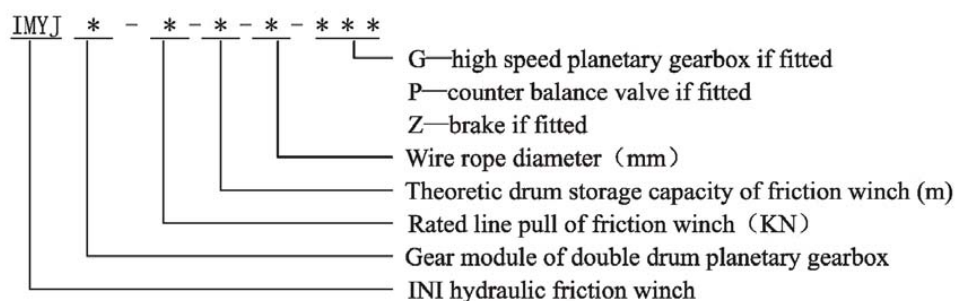
1. Brief introduction

IMYJ series hydraulic friction winch is our patent product. It consists of storage winch and double drum winch. The winch can be used together with pulley and rope guide to suit various working condition. We could also supply the mating hydraulic power pack which is also our patent product. The power pack could deliver maximum efficiency with minimum energy consumption.

This series winches are suitable for applications which require big rope storage capacity and constant line pull output. The winch can be fitted with single speed or two speed hydraulic motor. By using our own high speed hydraulic motor and mating pulley, this series winch features high working efficiency, low energy consumption, high reliability, low noise, compact and elegant design, and high cost efficiency.

They have been used in fields such as pipe laying, offshore equipment, electric power recovery, vehicle transportation, etc. They are not only widely used in Chinese market, but also been export to Russia, Netherlands, Middle East, Southeast Asia and other countries in the world.

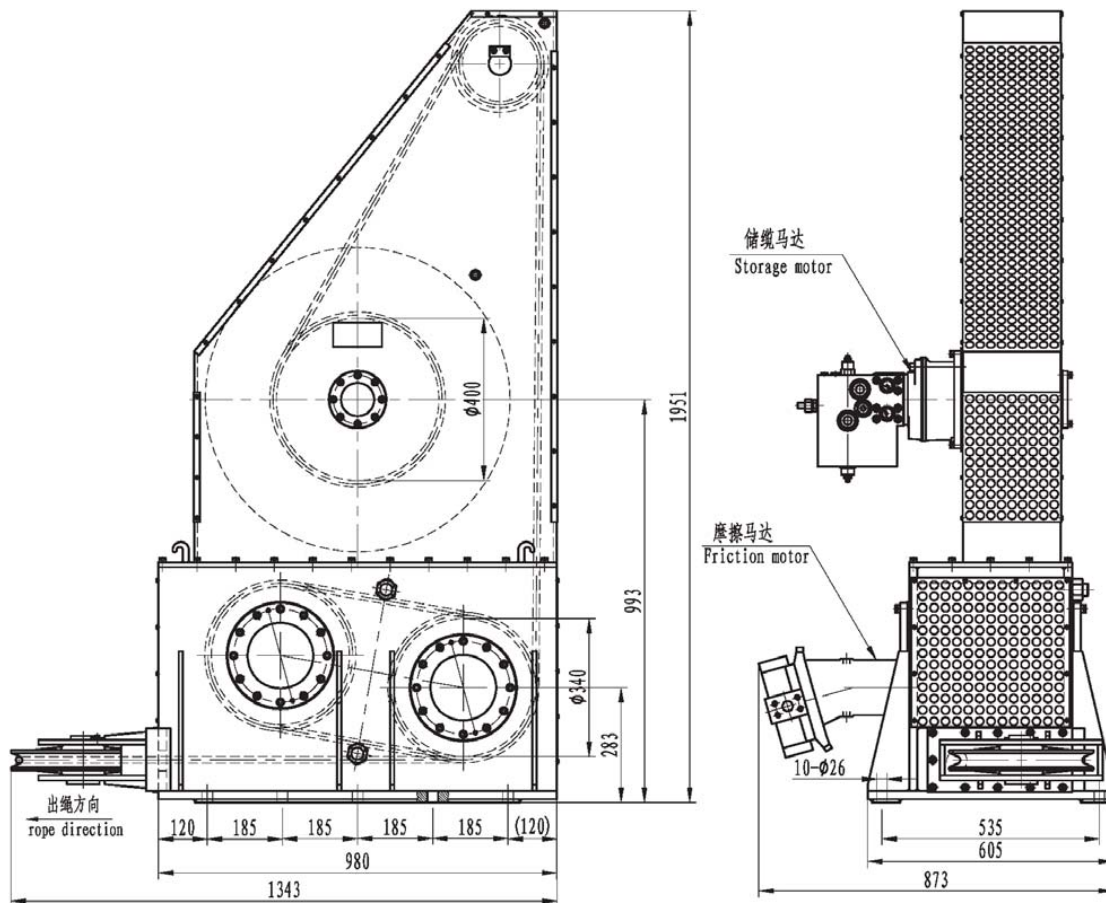
2. Model no. explanation



3. model no. example:

IMYJ61111-1500-400-63-ZPG means that winch is fitted with high speed planetary gearbox. Gear module is 61111. Rated line pull on first layer is 1500 KN. Theoretic drum storage capacity is 400 meters. Wire rope diameter is 63 mm. The winch is fitted with brake and single counterbalance valve.

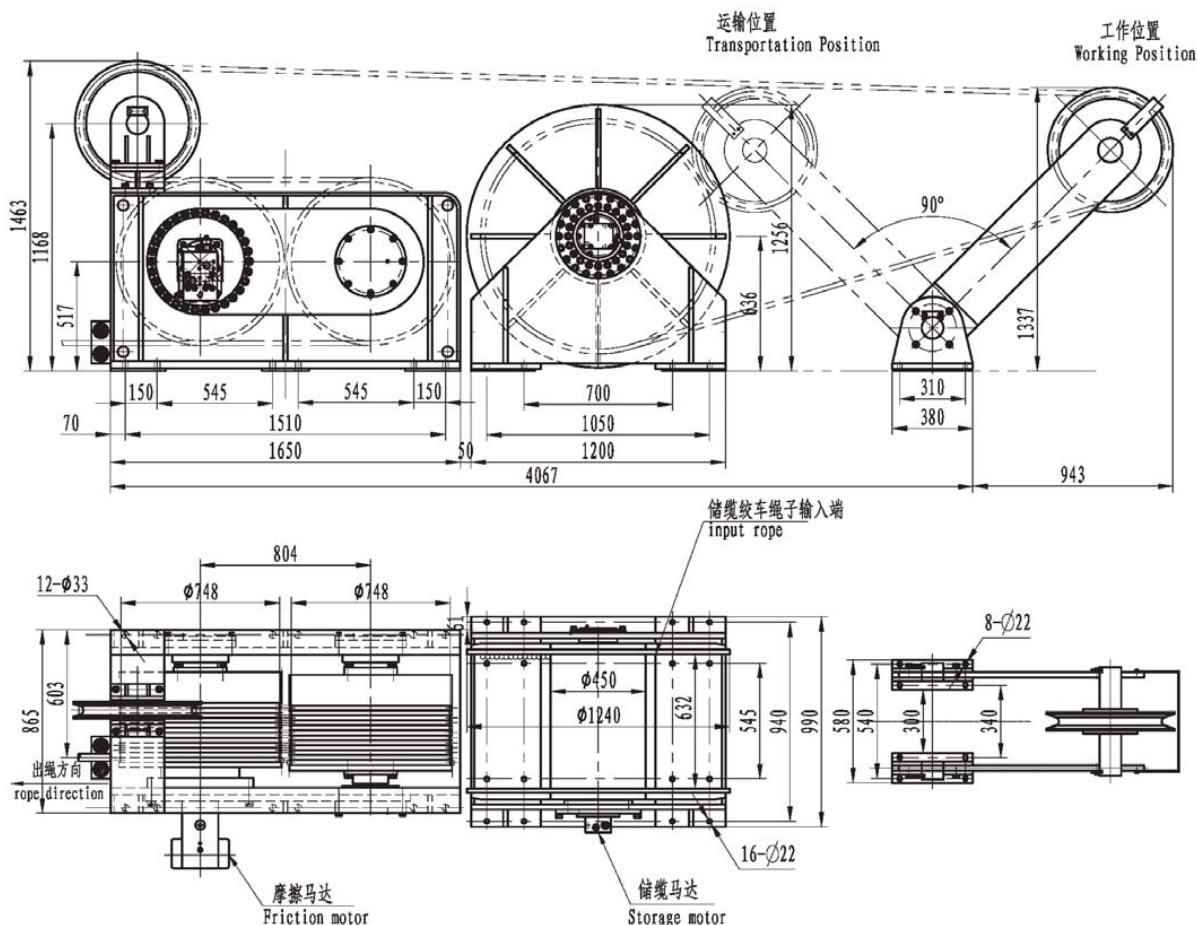
33-65-120-16-ZPG



储绳绞车 Storage drum winch	最大拉力	Max. pull on the drum(T)	0.05-0.1
	钢丝绳直径	Diameter of rope(mm)	16
	层数	Number of rope layers	9
	容绳量	Capability of drum(m)	120
	储绳马达型号	Storage winch motor type	INM2-420
	卷筒排量	Drum displacement(ml/rev)	425
	系统额定压力	System rated pressure(MPa)	6
	工作压差	Working pressure diff. (MPa)	5
	输出扭矩	Output torque(N.m)	300

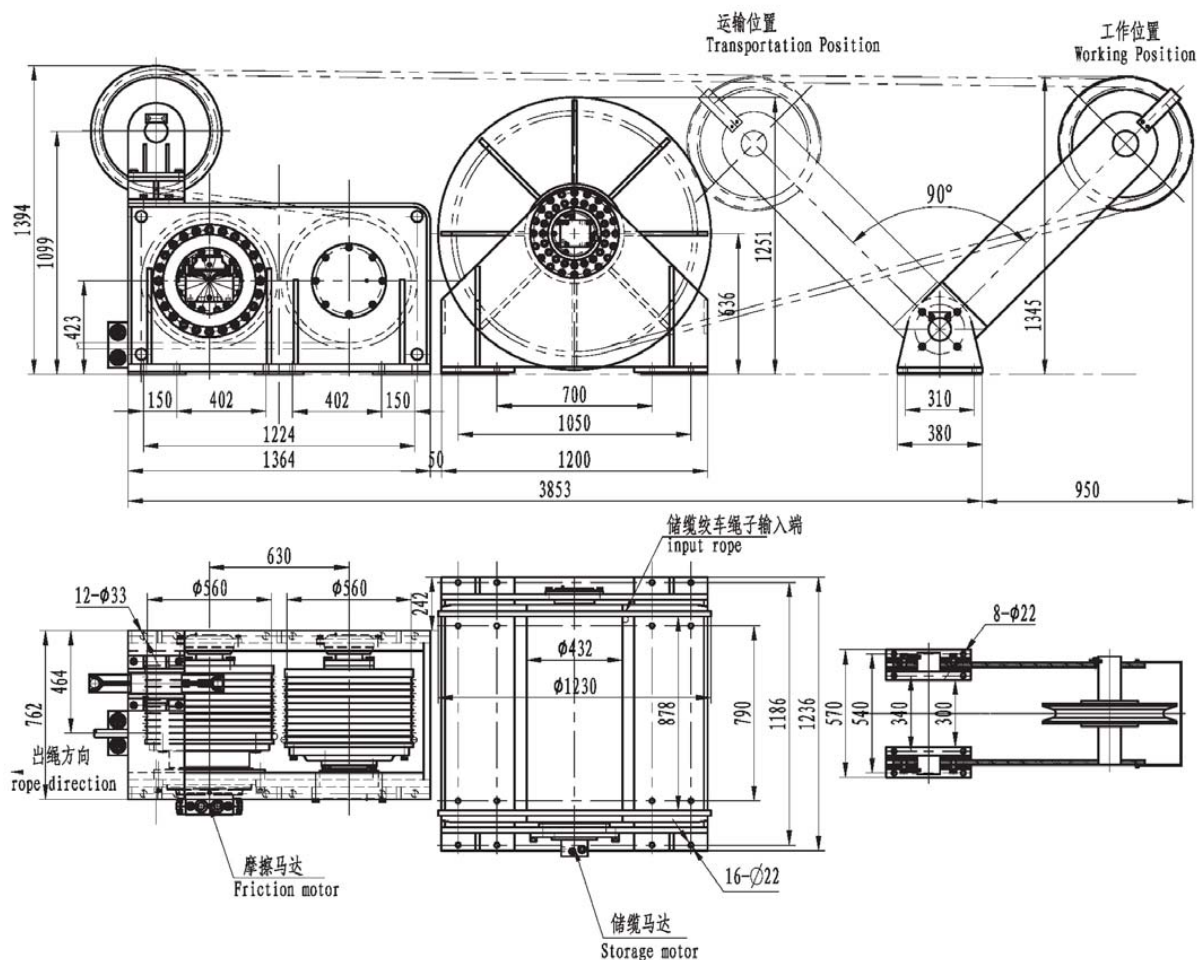
双卷筒绞车 Twin drum winch	第一层拉力	Pull on the 1st layer(T)	6.5
	第一层绳速	Speed at 1st layer(m/min)	0-70
	系统额定压力	System rated pressure(MPa)	25
	工作压差	Working pressure diff. (MPa)	23
	输出扭矩	Output torque(N.m)	12500
	卷筒排量	Drum displacement(ml/r)	4296
	钢丝绳直径	Diameter of rope(mm)	16
	马达型号	Hydraulic motor type	A6V80
	传动比	Gearbox ratio	53.7

466-200-1000-22-ZPG



储 缆 绞 车 Storage drum winch	最大拉力	Max. pull on the drum(T)	0.5-1
	钢丝绳直径	Diameter of rope(mm)	22
	层数	Number of rope layers	15
	容绳量	Capability of drum(m)	1000
	储缆马达型号	Storage winch motor type	IMS2
	储缆绞车传动比	Storage winch ratio	45.4
	卷筒排量	Drum displacement (ml/rev)	2356
	系统额定压力	System rated pressure(MPa)	20
	工作压差	Working pressure diff. (MPa)	18
	输出扭矩	Output torque (N.m)	7000

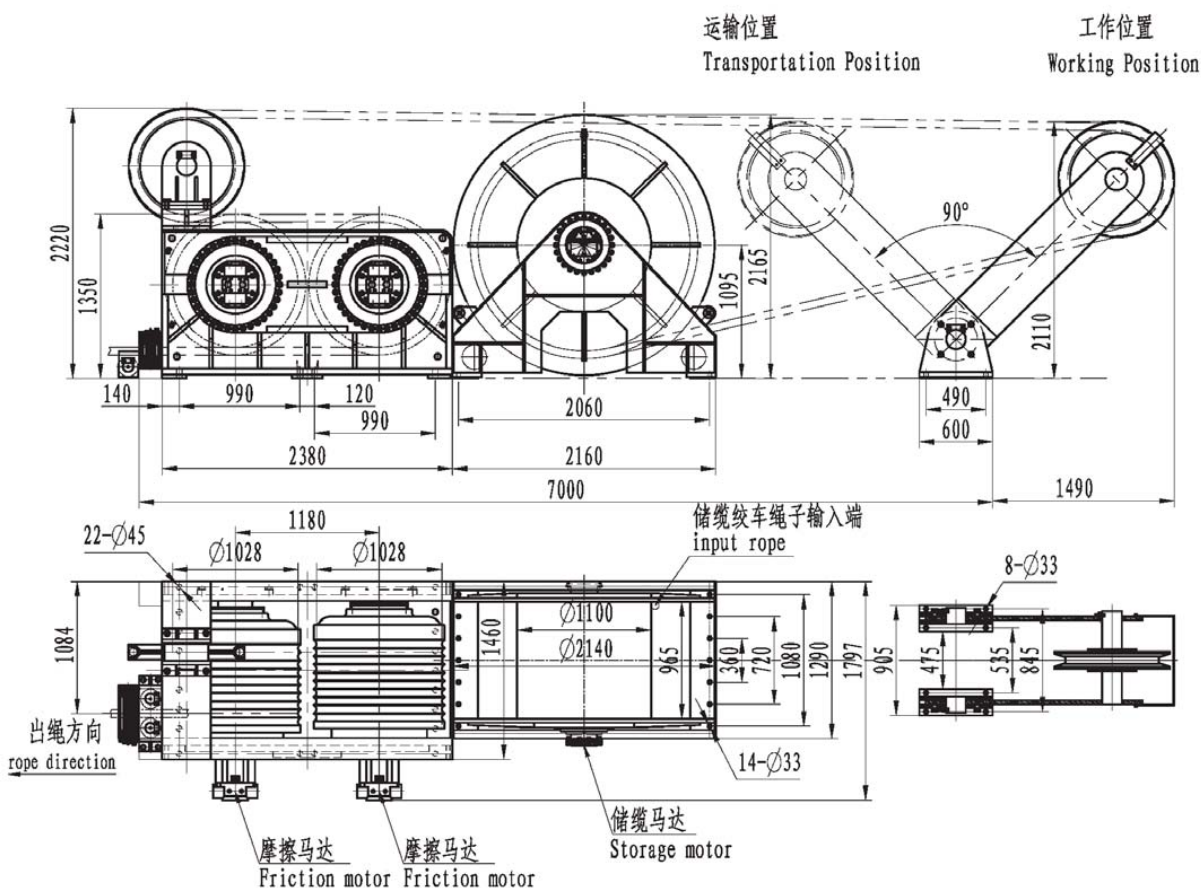
双 卷 筒 绞 车 Twin drum winch	第一层拉力	Pull on the 1st layer(T)	20
	第一层绳速	Speed at 1st layer(m/min)	0-21
	系统额定压力	System rated pressure(MPa)	20
	工作压差	Working pressure diff. (MPa)	18
	输出扭矩	Output torque (N.m)	58000
	卷筒排量	Drum displacement (mL/r)	22250
	钢丝绳直径	Diameter of rope (mm)	22
	马达型号	Hydraulic motor type	A2FM250
	传动比	Gearbox ratio	89



储缆绞车 Storage drum winch	最大拉力	Max. pull on the drum(T)	0.5-1
	钢丝绳直径	Diameter of rope (mm)	22
	层数	Number of rope layers	15
	卷绳量	Capability of drum(m)	900
	储缆马达型号	Storage winch motor type	IM52
	储缆绞车传动比	Storage winch ratio	45.4
	卷筒排量	Drum displacement (ml/rev)	2356
	系统额定压力	System rated pressure (MPa)	20
	工作压差	Working pressure diff. (MPa)	18
	输出扭矩	Output torque (N.m)	7000

双卷筒绞车 Twin drum winch	第一层拉力	Pull on the 1st layer (T)	30
	第一层绳速	Speed at 1st layer (m/min)	0-15
	系统额定压力	System rated pressure (MPa)	26
	工作压差	Working pressure diff. (MPa)	24
	输出扭矩	Output torque (N.m)	95000
	卷筒排量	Drum displacement (ml/r)	29841
	钢丝绳直径	Diameter of rope (mm)	27
	马达型号	Hydraulic motor type	IM172
	传动比	Gearbox ratio	128.6

61111-1500-400-63-ZPG



储绳绞车 Storage drum winch	最大拉力	Max. pull on the drum(T)	12.7-8.1
	钢丝绳直径	Diameter of rope(mm)	63
	层数	Number of rope layers	6
	容绳量	Capability of drum(m)	400
	储绳马达型号	Storage winch motor type	IM172
	储绳绞车传动比	Storage winch ratio	128.6
	卷筒排量	Drum displacement(ml/rev)	22119
	系统额定压力	System rated pressure(MPa)	26
	工作压差	Working pressure diff. (MPa)	25
	输出扭矩	Output torque(N.m)	72600

双卷筒绞车 Twin drum winch	第一层拉力	Pull on the 1st layer(T)	150
	第一层绳速	Speed at 1st layer(m/min)	0-5
	系统额定压力	System rated pressure(MPa)	26
	工作压差	Working pressure diff. (MPa)	25
	输出扭矩	Output torque(N.m)	723000
	卷筒排量	Drum displacement(ml/r)	113000x2
	钢丝绳直径	Diameter of rope(mm)	63
	马达型号	Hydraulic motor type	A4FM500x2
	传动比	Gearbox ratio	226