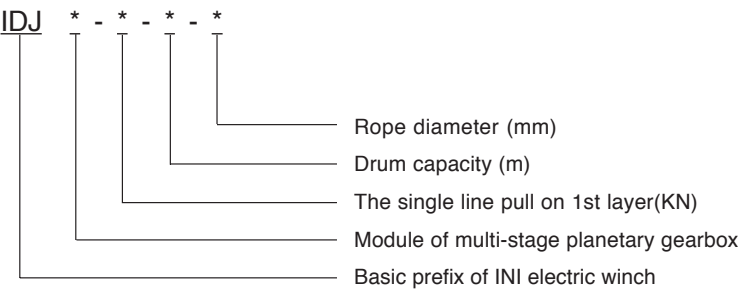


IDJ Electric Winch Series

1. Brief Introduction

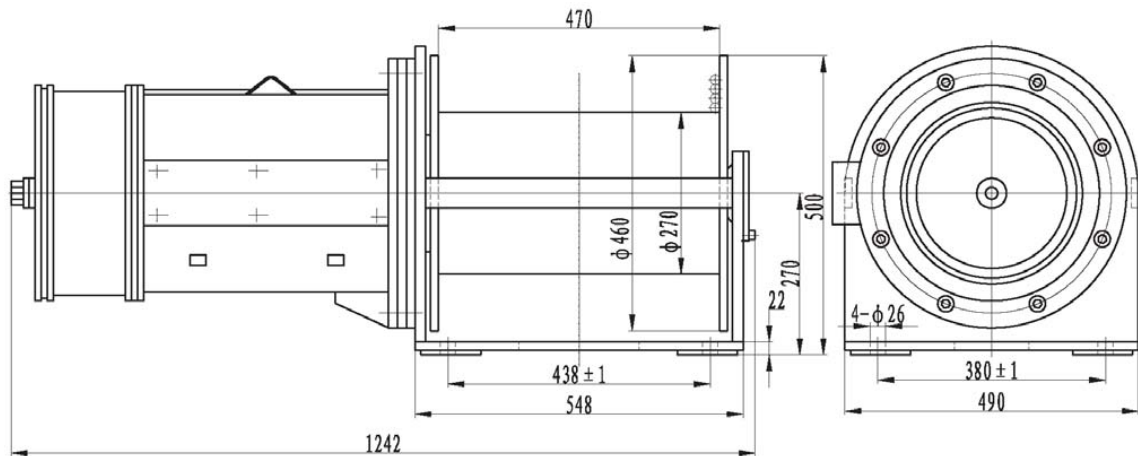
IDJ electric winch series consist of electromotor with brake, planetary gearbox, drum, and frame. The customer only equip electric box for winch performance. The series feature compact design, simply and rugged construction, high reliability, and good economy. Therefore they have been widely applied in ship and deck machinery, construction machinery.

2. Model Options



3. Options Example

IDJ23-10-30-14 represents that the electric winch adopts two stages planetary gearbox, the modules of gearbox are 2.5 and 3 respectively, the single line pull on 1st layer is 10kN, the drum capacity is 30m, and the rope diameter is 14mm.



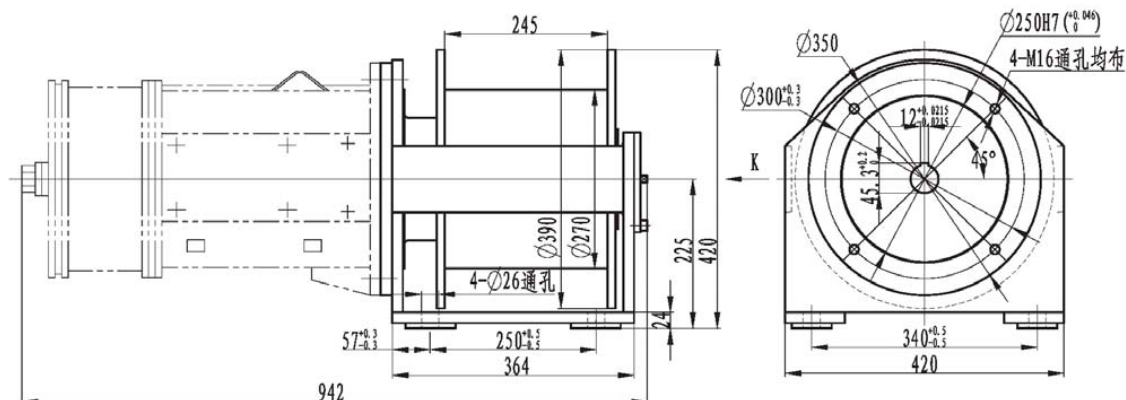
型号 Model	第一层 the 1st layer		钢丝绳 直径 Rope diameter (mm)	层 数 layer	容绳量 Wire rope capacity (m)	电机型号 Model of electromotor	电制 Parameter of electromotor			减速器 传动比 Ratio	电机功率 Power (KW)
	拉力 Pull (KN)	绳速 Speed (m/min)					电压 Volt (V)	电流 Current (A)	频率 Frequency (Hz)		
IDJ23-10-130-14	10	15	14	4	130	YZ-132S-6-H	380	10.5	50	49	3.7
IDJ23-15-130-14	15	15	14	4	130	YZ-132M2-6-H	380	15.3	50	49	5.5
IDJ23-20-130-14	20	18	14	4	130	YZ-160S-6-H	380	19.73	50	49	7.5
IDJ23-25-130-14	25	16	14	4	130	YZ-160S-6-H	380	19.73	50	49	7.5
IDJ23-30-130-14	30	16	14	4	130	YZ-160L-6-H	380	26.8	50	49	11
IDJ23-40-120-15.5	40	7/14.5/30	15.5	4	120	JZ2-H-42-4/8/16	380	23/25.5/36	50	45	11/11/7.5

注: 1. 容绳量为绞车的理论容绳量, 实际允许的有效容绳量应考虑保留钢丝绳3圈以防绳头脱出;

2. 表格里的外形尺寸均包括电机尺寸, 用户若所配电机特殊, 则联接部分的过度板和连接套需特殊加工。

Note: 1. Drum capacity indicates theoretic valve. Maintain mandatory minimum of three wraps of wire rope to be left on the drum at all times for safety.

2. The dimension of general electric motor is included in above installation drawing. If fitted electric motor is specific, the connection dimension is also changed.



Specification 主要技术性能参数

Rope layer 钢丝绳层数	1	3
Line pull 钢丝绳拉力(kN)	18.9	16
Rope speed 绳速(m/min)	19	21
Rope capacity 容绳量(m)	16.5	54
Advised rope size(1870) 钢绳规格(mm)	13	
Gearbox model 行星减速器型号	C23	
Ratio 传动比	i=53.3077	
Motor type 电机型号	YZ-160S-6-H-B5(客户自供)	
Motor rated output 功率(kW)	8.5	
Motor rated speed 电机转速(r/min)	1140	
Voltage and Frequency 电制模式	440V, 60Hz	
Motor Insulation 绝缘等级	F	
Motor Protection 防护等级	IP56 (TENV)	

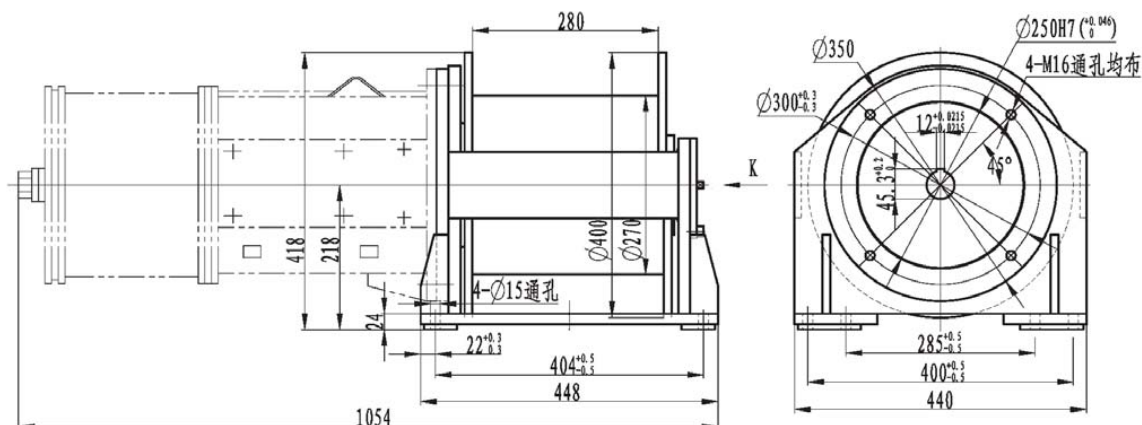


注: 1. 容绳量为绞车的理论容绳量, 实际允许的有效容绳量应考虑保留钢丝绳3圈以防绳头脱出;

2. 外形尺寸包括电机尺寸, 用户若所配电机特殊, 则联接部分的过度板和连接套需特殊加工。

Note: 1. Drum capacity indicates theoretic value. Maintain mandatory minimum of three wraps of wire rope to be left on the drum at all times for safety.

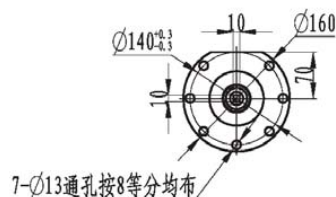
2. The dimension of general electric motor is included in above installation drawing. If fitted electric motor is specific, the connection dimension is also changed.



Specification 主要技术性能参数

Rope layer 钢丝绳层数	1	3
Line pull 钢丝绳拉力 (kN)	29.9	25
Rope speed 绳速 (m/min)	19	21
Rope capacity 容量 (m)	18	58
Adviced rope size (1870) 钢绳规格 (mm)	14	
Gearbox model 行星减速器型号	C23	
Ratio 传动比	i=53.3077	
Motor type 电机型号	YZ-160L-6-H-B5 (客户自供)	
Motor rated output 功率 (kW)	13	
Motor rated speed 电机转速 (r/min)	1130	
Voltage and Frequency 电制模式	440V, 60Hz	
Motor Insulation 绝缘等级	F	
Motor Protection 防护等级	IP56 (TENV)	

K向 K Direction

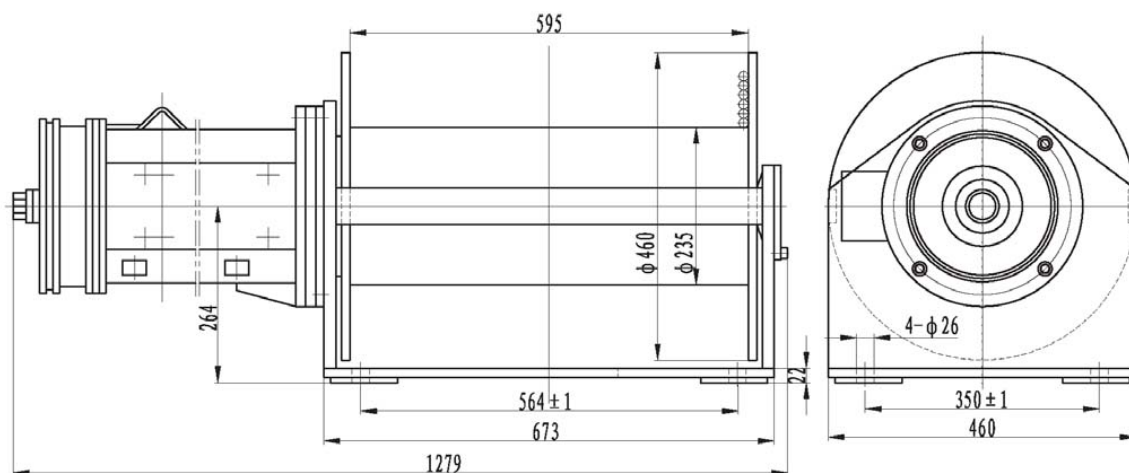


注: 1. 容量为绞车的理论容量, 实际允许的有效容量应考虑保留钢丝绳3圈以防绳头脱出;

2. 外形尺寸包括电机尺寸, 用户若所配电机特殊, 则联接部分的过度板和连接套需特殊加工。

Note: 1. Drum capacity indicates theoretic valve. Maintain mandatory minimum of three wraps of wire rope to be left on the drum at all times for safety.

2. The dimension of general electric motor is included in above installation drawing. If fitted electric motor is specific, the connection dimension is also changed.



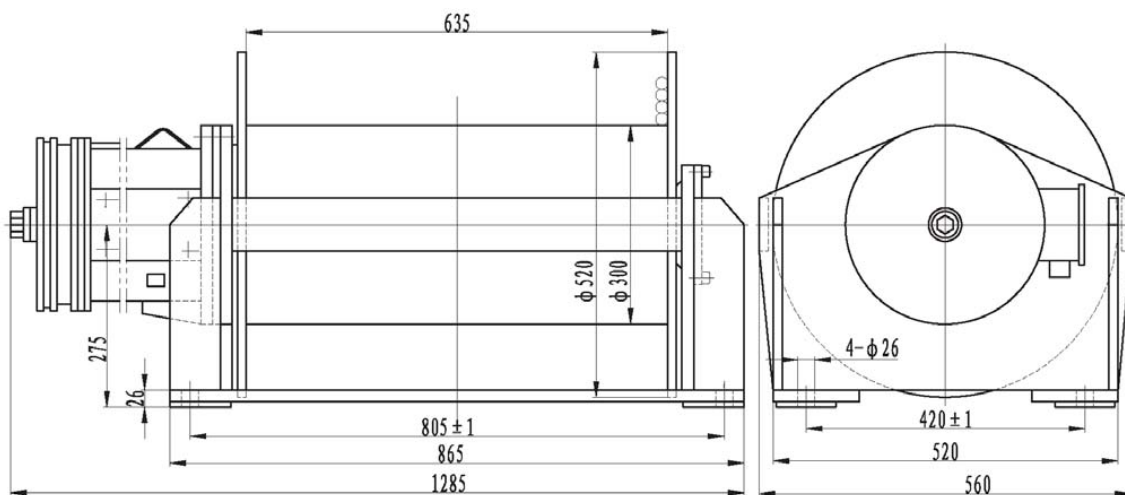
型号 Model	第一层 the 1st layer		钢丝绳 直径 Rope diameter (mm)	层数 layer	容绳量 Wire rope capacity (m)	电机型号 Model of electromotor	电制 Parameter of electromotor			减速器 传动比 Ratio	电机功率 Power (KW)
	拉力 Pull (KN)	绳速 Speed (m/min)					电压 Volt (V)	电流 Current (A)	频率 Frequency (Hz)		
IDJ22.2.5-22-250-14	22	2.2/6.6	14	6	250	JZ2-H-23-4/12	380	9.5/10.1	50	175	4.3/1.7

注：1. 容绳量为绞车的理论容绳量，实际允许的有效容绳量应考虑保留钢丝绳3圈以防绳头脱出；

2. 表格里的外形尺寸均包括电机尺寸，用户若所配电机特殊，则联接部分的过度板和连接套需特殊加工。

Note: 1. Drum capacity indicates theoretic value. Maintain mandatory minimum of three wraps of wire rope to be left on the drum at all times for safety.

2. The dimension of general electric motor is included in above installation drawing. If fitted electric motor is specific, the connection dimension is also changed.



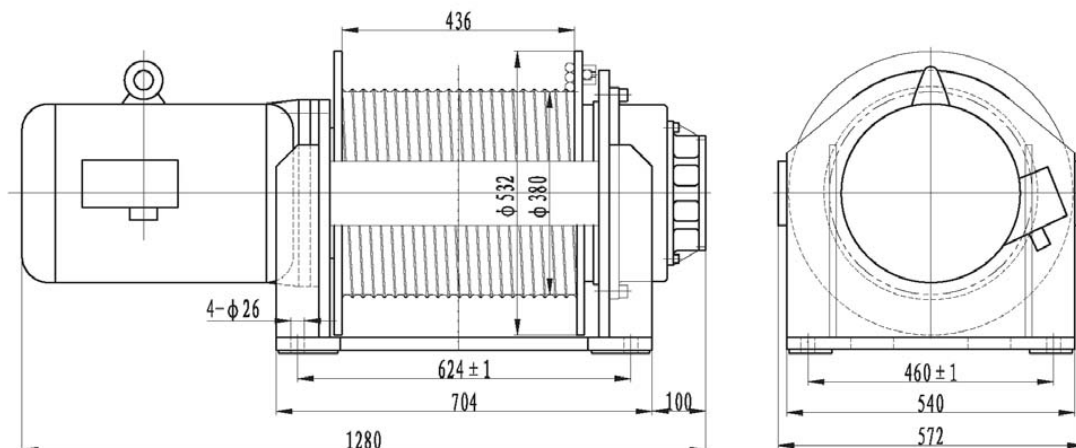
型 号 Model	第一层 the 1st layer		钢丝绳 直径 Rope diameter (mm)	层数 layer	容绳量 Wire rope capacity (m)	电机型号 Model of electromotor	电 制 Parameter of electromotor			减速器 传动比 Ratio	电机功率 Power (KW)
	拉力 Pull (KN)	绳速 Speed (m/min)					电压 Volt (V)	电流 Current (A)	频率 Frequency (Hz)		
IDJ233-36-171-16	36	11.5	16	4	171	YZ-132M2-4-H	380	18.5	50	125	7.5
IDJ233-40-171-16	40	11.5/3.8	16	4	171	JZ2-H-33-4/12	380	17.9/14.8	50	125	8.5/3.5
IDJ233-42-160-18	42	14.5	18	4	160	YEJ160M-4-B5	380	22.6	50	100	11

注：1. 容绳量为绞车的理论容绳量，实际允许的有效容绳量应考虑保留钢丝绳3圈以防绳头脱出；

2. 表格里的外形尺寸均包括电机尺寸，用户若所配电机特殊，则联接部分的过度板和连接套需特殊加工。

Note: 1. Drum capacity indicates theoretic valve. Maintain mandatory minimum of three wraps of wire rope to be left on the drum at all times for safety.

2. The dimension of general electric motor is included in above installation drawing. If fitted electric motor is specific, the connection dimension is also changed.



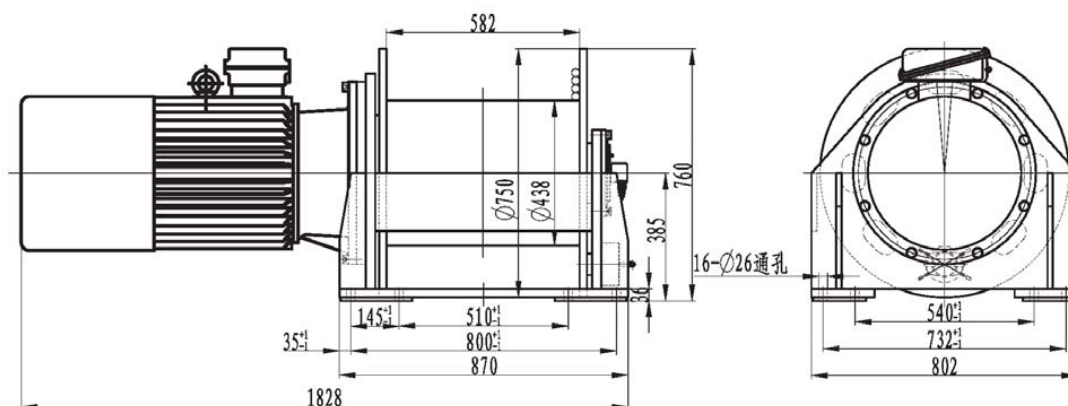
型号 Model	第一层 the 1st layer		钢丝绳 直径 Rope diameter (mm)	层数 layer	容绳量 Wire rope capacity (m)	电机型号 Model of electromotor	电制 Parameter of electromotor			减速器 传动比 Ratio	电机功率 Power (KW)
	拉力 Pull (KN)	绳速 Speed (m/min)					电压 Volt (V)	电流 Current (A)	频率 Frequency (Hz)		
IDJ234-60-96-18	60	9	18	3	96	YEJ160M-4-B5	380	22.6	50	192.5	11

注: 1. 容绳量为绞车的理论容绳量, 实际允许的有效容绳量应考虑保留钢丝绳3圈以防绳头脱出;

2. 表格里的外形尺寸均包括电机尺寸, 用户若所配电机特殊, 则联接部分的过度板和连接套需特殊加工。

Note: 1. Drum capacity indicates theoretic valve. Maintain mandatory minimum of three wraps of wire rope to be left on the drum at all times for safety.

2. The dimension of general electric motor is included in above installation drawing. If fitted electric motor is specific, the connection dimension is also changed.



Specification 主要技术性能参数

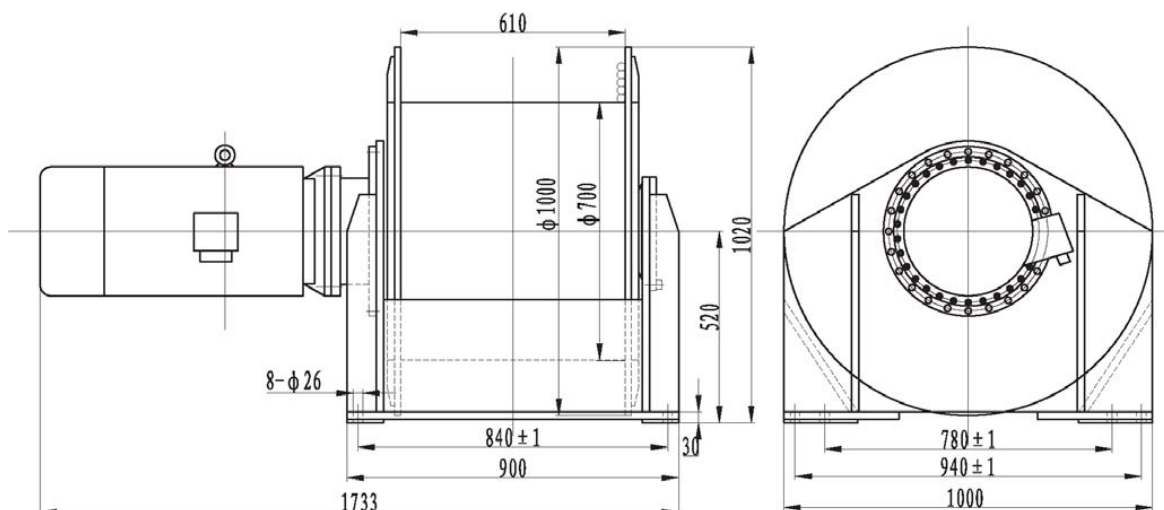
Rope layer 钢丝绳层数	1	4
Rope capacity 容绳量(m)	30	150
Line pull 钢丝绳拉力(kN)	80	
Rope speed 绳速(m/min)	18	
Advised rope size 钢绳规格(mm)	24	
Gearbox model 行星减速器型号	IGT36W3-B59.3894	
Ratio 传动比	i=59.3894	
Motor type 电机型号	YZP2-250M-8H(客户自供)	
Motor rated output 功率(kW)	30	
Motor rated speed 电机转速(r/min)	735	
Voltage and Frequency 电制模式	380V, 50Hz	
Motor Insulation 绝缘等级	F	
Motor Protection 防护等级	IP56 (TENV)	

注: 1. 容绳量为绞车的理论容绳量, 实际允许的有效容绳量应考虑保留钢丝绳3圈以防绳头脱出;

2. 外形尺寸包括电机尺寸, 用户若所配电机特殊, 则联接部分的过度板和连接套需特殊加工。

Note: 1. Drum capacity indicates theoretic valve. Maintain mandatory minimum of three wraps of wire rope to be left on the drum at all times for safety.

2. The dimension of general electric motor is included in above installation drawing. If fitted electric motor is specific, the connection dimension is also changed.



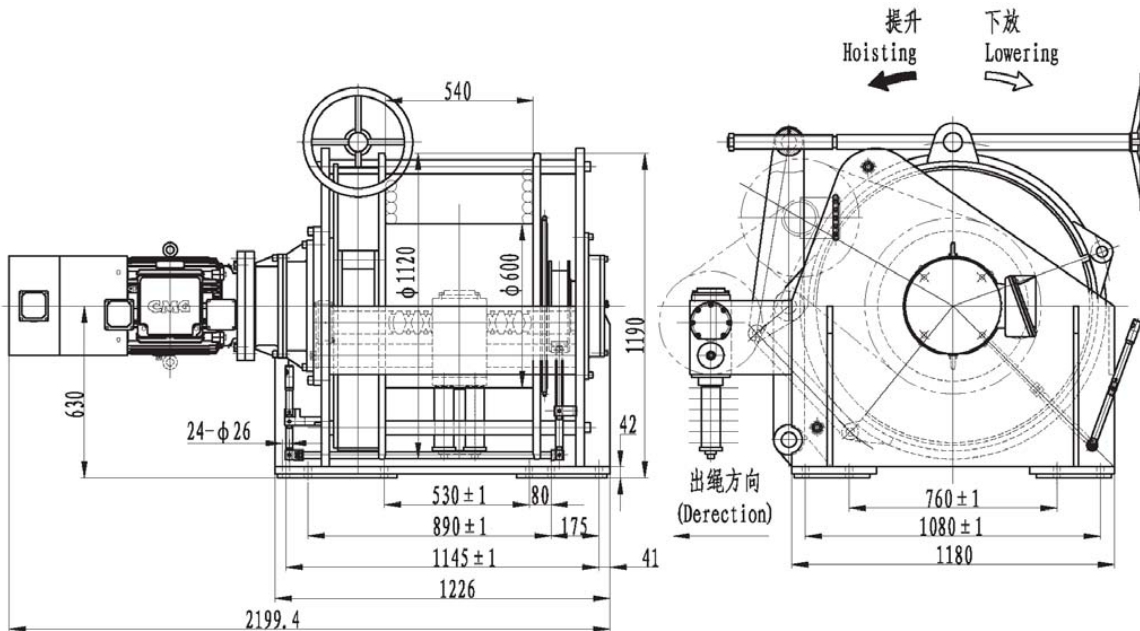
型 号 Model	第一层 the 1st layer		钢丝绳 直径 Rope diameter (mm)	层数 layer	容绳量 Wire rope capacity (m)	电机型号 Model of electromotor	电 制 Parameter of electromotor			减速器 传动比 Ratio	电机功率 Power (KW)
	拉力 Pull (KN)	绳速 Speed (m/min)					电压 Volt (V)	电流 Current (A)	频率 Frequency (Hz)		
IDJ345-85-340-21.5	85	19	21.5	5	340	YEJ200L-4-B5	380	56.8	50	177.1	30

注：1. 容绳量为绞车的理论容绳量，实际允许的有效容绳量应考虑保留钢丝绳3圈以防绳头脱出；

2. 表格里的外形尺寸均包括电机尺寸，用户若所配电机特殊，则联接部分的过度板和连接套需特殊加工。

Note: 1. Drum capacity indicates theoretic valve. Maintain mandatory minimum of three wraps of wire rope to be left on the drum at all times for safety.

2. The dimension of general electric motor is included in above installation drawing. If fitted electric motor is specific, the connection dimension is also changed.



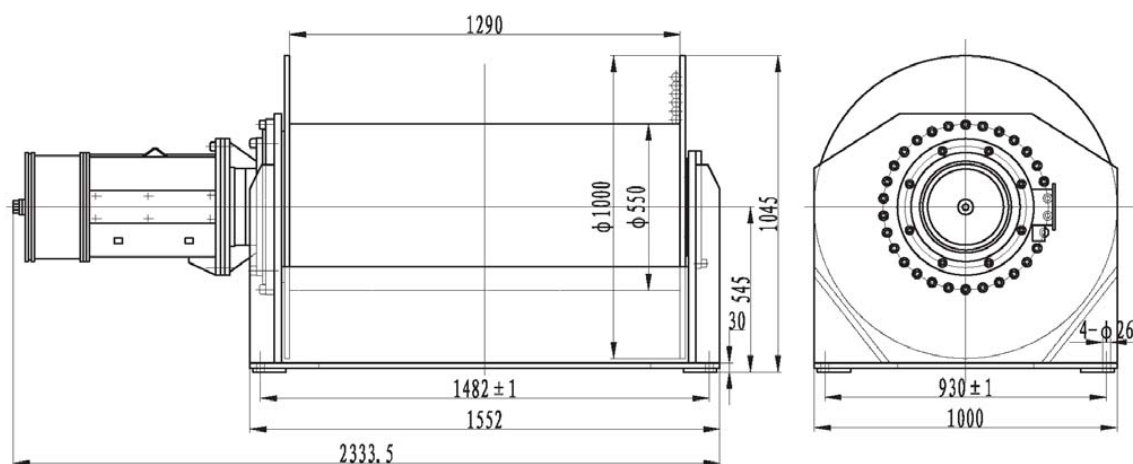
型 号 Model	第一层 the 1st layer		钢丝绳 直径 Rope diameter (mm)	层 数 layer	容绳量 Wire rope capacity (m)	电 机 型 号 Model of electromotor	电 制 Parameter of electromotor			减速器 传动比 Ratio	电机功率 Power (KW)
	拉力 Pull (KN)	绳速 Speed (m/min)					电压 (V) Volt (V)	电流 (A) Current (A)	频率 (Hz) Frequency (Hz)		
IDJ356-100-150-40	100	11	40	5	150	M34018505	415	43.9	50	267.274	18.5

注: 1. 额定扭矩是指考虑系统压力损失和行星减速器效率以及电动机的机械效率后实际输出的扭矩值。

2. 表格里的外形尺寸均不包括电机尺寸, 用户若所配电机特殊, 则联接部分的过度板和连接套需特殊加工。

Note: 1. Drum capacity indicates theoretic value. Maintain mandatory minimum of three wraps of wire rope to be left on the drum at all times for safety.

2. The dimension of general electric motor is included in above installation drawing. If fitted electric motor is specific, the connection dimension is also changed.



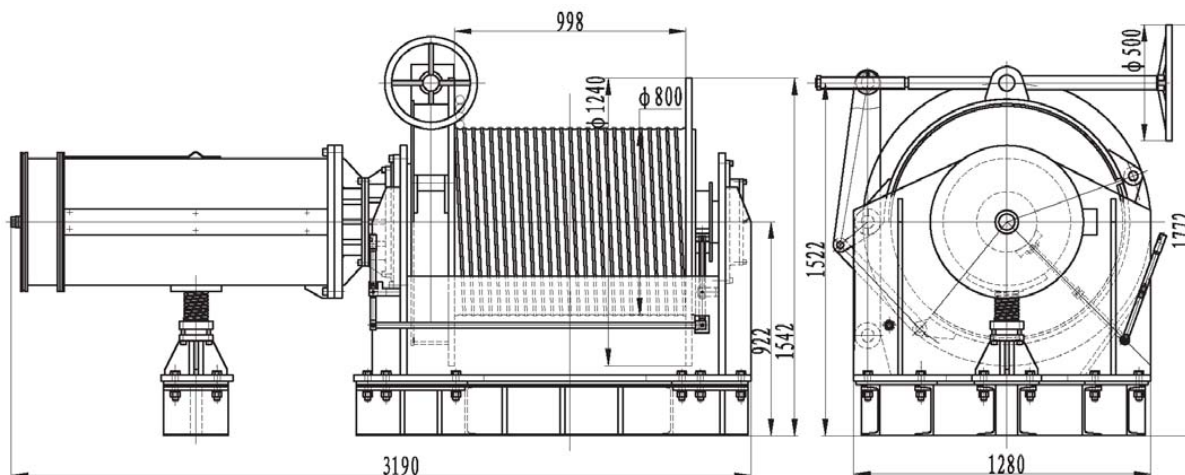
型号 Model	第一层 the 1st layer		钢丝绳 直径 Rope diameter (mm)	层数 layer	容量 Wire rope capacity (m)	电机型号 Model of electromotor	电制 Parameter of electromotor			减速器 传动比 Ratio	电机功率 Power (KW)
	拉力 Pull (KN)	绳速 Speed (m/min)					电压 (V) Volt (V)	电流 (A) Current (A)	频率 (Hz) Frequency (Hz)		
IDJ356-150-600-28	150	7	28	6	600	YZ-220M-6-H	380	43.9	50	245	18.5

注：1. 额定扭矩是指考虑系统压力损失和行星减速器效率以及电动机的机械效率后实际输出的扭矩值。

2. 表格里的外形尺寸均不包括电机尺寸，用户若所配电机特殊，则联接部分的过度板和连接套需特殊加工。

Note: 1. Drum capacity indicates theoretic value. Maintain mandatory minimum of three wraps of wire rope to be left on the drum at all times for safety.

2. The dimension of general electric motor is included in above installation drawing. If fitted electric motor is specific, the connection dimension is also changed.



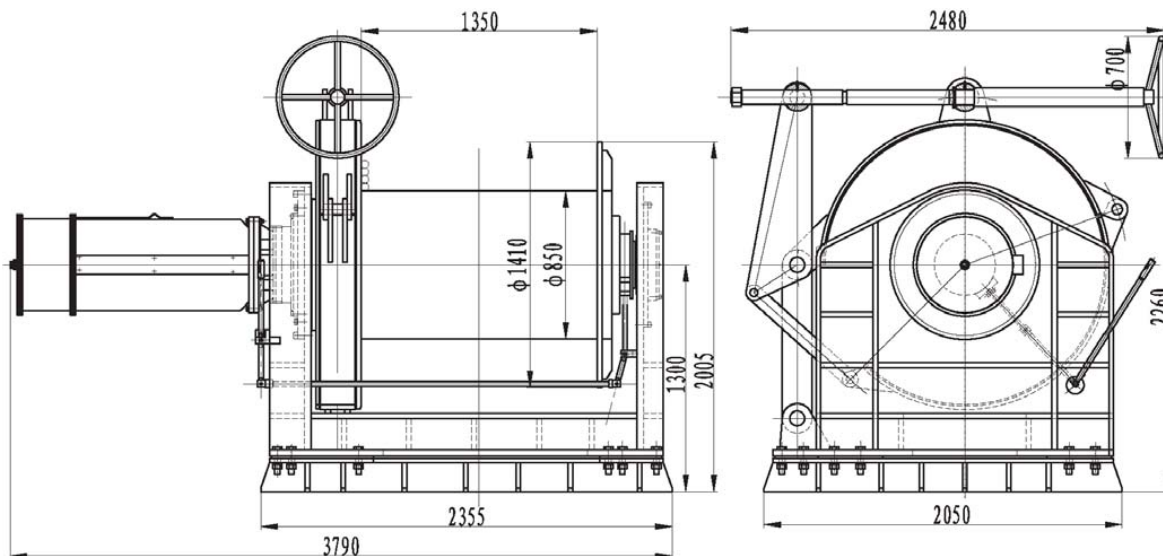
型号 Model	第一层 the 1st layer		钢丝绳 直径 Rope diameter (mm)	层数 layer	容绳量 Wire rope capacity (m)	电机型号 Model of electromotor	电制 Parameter of electromotor			减速器 传动比 Ratio	电机功率 Power (KW)
	拉力 Pull (KN)	绳速 Speed (m/min)					电压 Volt (V)	电流 Current (A)	频率 Frequency (Hz)		
IDJ456-150-300-36	100/150	36/18	36	4	300	JZ2-H-72-4/8	380	114/135	50	112	60

注：1. 容绳量为绞车的理论容绳量，实际允许的有效容绳量应考虑保留钢丝绳3圈以防绳头脱出；

2. 表格里的外形尺寸均包括电机尺寸，用户若所配的电机特殊，则联接部分的过度板和连接套需特殊加工。

Note: 1. Drum capacity indicates theoretic valve. Maintain mandatory minimum of three wraps of wire rope to be left on the drum at all times for safety.

2. The dimension of general electric motor is included in above installation drawing. If fitted electric motor is specific, the connection dimension is also changed.



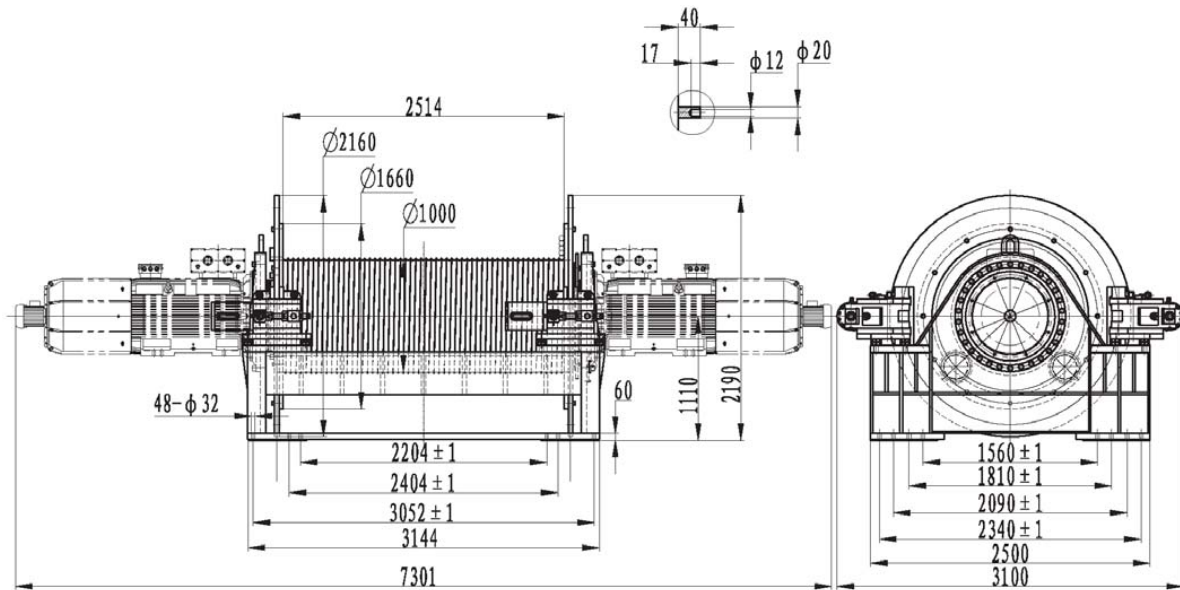
型号 Model	第一层 the 1st layer		钢丝绳 直径 Rope diameter (mm)	层数 layer	容绳量 Wire rope capacity (m)	电机型号 Model of electromotor	电制 Parameter of electromotor			减速器 传动比 Ratio	电机功率 Power (KW)
	拉力 Pull (KN)	绳速 Speed (m/min)					电压 Volt (V)	电流 Current (A)	频率 Frequency (Hz)		
IDJ479-120-350-43	120/240/360	6.4/3.2/1.6	43	4	350	JZ2-H-72-4/8/16	380	114/135/195	50	198	60/60/45

注：1. 容绳量为绞车的理论容绳量，实际允许的有效容绳量应考虑保留钢丝绳3圈以防绳头脱出；

2. 表格里的外形尺寸均包括电机尺寸，用户若所配的电机特殊，则联接部分的过度板和连接套需特殊加工。

Note: 1. Drum capacity indicates theoretic valve. Maintain mandatory minimum of three wraps of wire rope to be left on the drum at all times for safety.

2. The dimension of general electric motor is included in above installation drawing. If fitted electric motor is specific, the connection dimension is also changed.



型号 Model	第一层 the 1st layer		钢丝绳 直径 Rope diameter (mm)	层数 layer	容绳量 Wire rope capacity (m)	电机型号 Model of electromotor	电制 Parameter of electromotor		减速器 传动比 Ratio	电机功率 Power (KW)
	拉力 Pull (KN)	绳速 Speed (m/min)					电压 Volt (V)	频率 Frequency (Hz)		
IDJ699-600-1000-44	600	2-60	44	5	1000	SXLEE355ML..S-IM2001	440	60	88.3116	350x2

注：1. 本绞车由变频电机和变频器计算控制绳速；

2. 容绳量为绞车的理论容绳量，实际允许的有效容绳量应考虑保留钢丝绳3圈以防绳头脱出；

3. 表格里的外形尺寸均包括电机尺寸，用户若所配的电机特殊，则联接部分的过度板和连接板需特殊加工。

Note: 1. Drum capacity indicates theoretic valve. Maintain mandatory minimum of three wraps of wire rope to be left on the drum at all times for safety.

2. The dimension of general electric motor is included in above installation drawing. If fitted electric motor is specific, the connection dimension is also changed.