

IGT Hydrostatic Drive Series (Travel Motor)

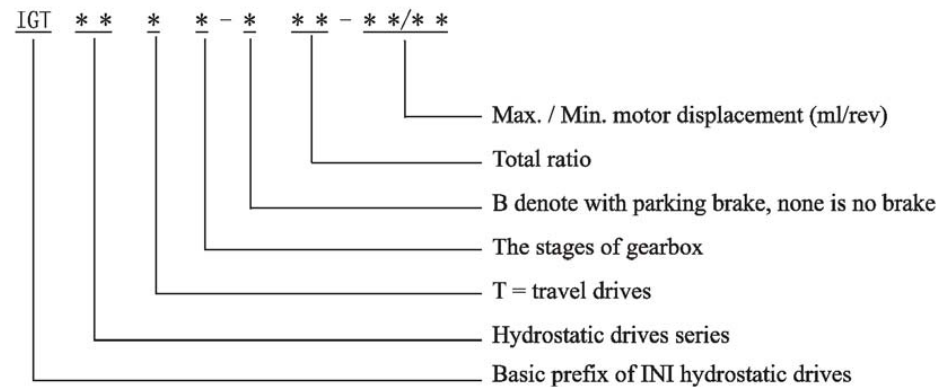
1. Brief Introduction

The IGT hydrostatic drive series consist of built-in variable displacement piston motor, multi-disc brake, planetary gearbox, and functional valve block. The drives feature high working efficiency, long life, great reliability, compact design, high working pressure and Hi-low speed switch control. The case-rotation type travel drives not only can be directly installed inside the crawler or wheel, but also can be used in road header or milling machine for power turning drives and winch drives.

The drives adopt our patented technology and design experience. The drives described in this catalog are of the standard type. Other design variants with different ratio, dimensions, and power characteristics are available if so requested for specific applications.

The drives have been widely applied in crawler excavator, crawler cranes, road milling machine, road header, road roller, track vehicles, aerial platform, self-propel drill rigs and winch drives. The drives not only have been used by domestic customer such as SANY, XCMG, YUTONG, but also have been exported to Southeast Asia, Middle East, India, South Korea, Netherlands, Germany and Russia and so on.

2. Model Options



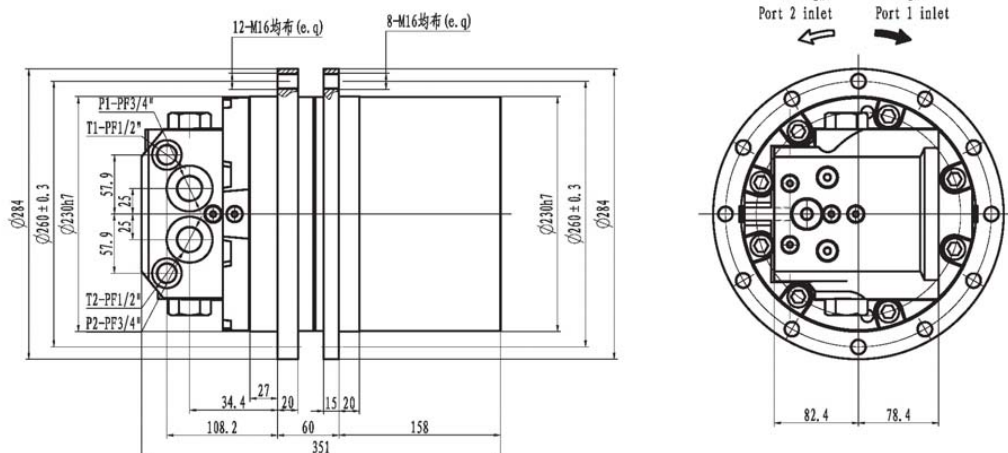
3. Options Example

IGT80T3-B99-172/111 represents that the series drive is 80 with maximum output torque of 80kNm, three stages planetary gearbox with a total ratio of 99, fitted with a multi-disc parking brake, and high speed axial hydraulic motor. The hydraulic motor has a variable displacement (two speed) of 172ml/rev in low speed position and 111ml/rev in high speed position.

4. The displacement of hydraulic motor could be changed according to request of users. Before then, please contact with R.D department

外形尺寸

Dimensions

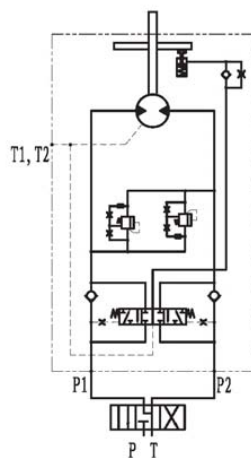


技术参数

Technical Data

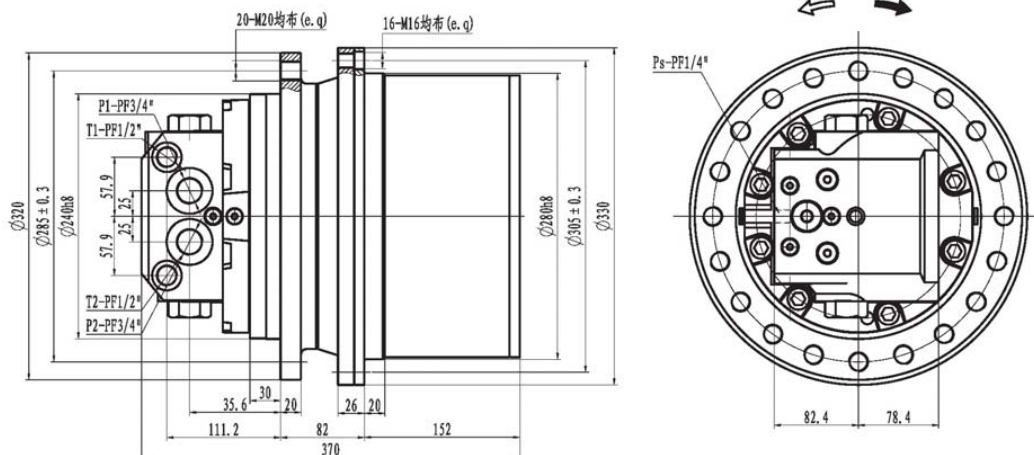
最大输出扭矩	最大总排量	最大马达排量	传动比	最高输入转速	高低速比	最大流量	最高压力	重量	适用机重
Max. Output Torque	Max. Total Displacement	Max. Motor Displacement	Gear Ratio	Max. Speed	Speed Ratio	Max. Flow	Max. Pressure	Mass	Applicable Vehicle Mass
N. m	ml/rev	ml/rev		rpm	High/Low	L/min	MPa	Kg	Ton
9000	3937.2	87.3	20.4 · 25.6 29.6 · 35.6 45.1	2800	/	150	35	100	6 ~ 9

液压原理图



外形尺寸

Dimensions

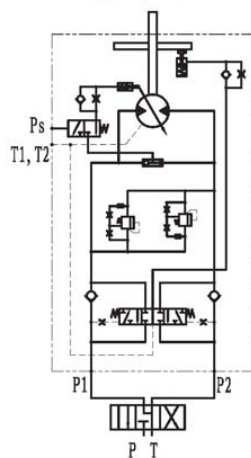


技术参数

Technical Data

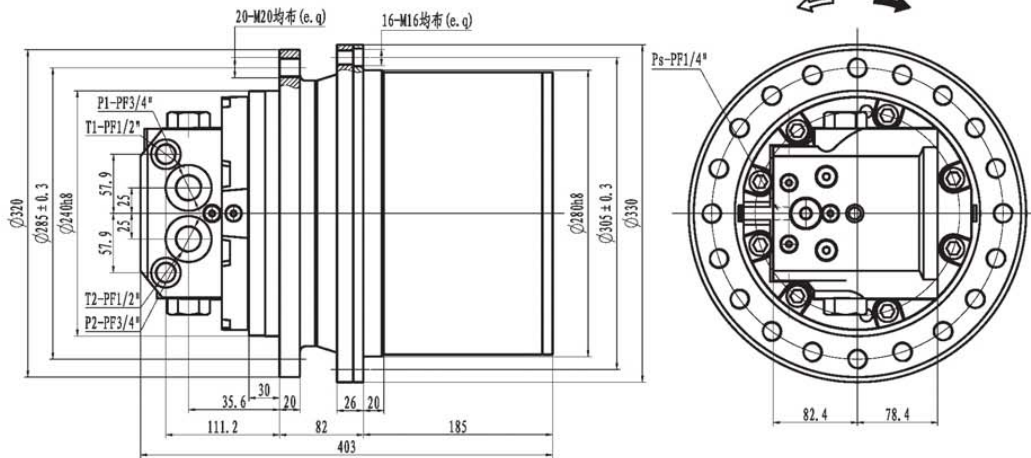
最大输出扭矩 Max. Output Torque N. m	最大总排量 Max. Total Displacement ml/rev	最大马达排量 Max. Motor Displacement ml/rev	传动比 Gear Ratio	最高输入转速 Max. Speed rpm	高低速比 Speed Ratio High/Low	最大流量 Max. Flow L/min	最高压力 Max. Pressure MPa	重量 Mass Kg	适用机重 Applicable Vehicle Mass Ton
17000	4714.2	87.3	26.4 · 32.1 37.6 · 45.4 54	2800	Max. 1.8	150	35	150	8~12

液压原理图



外形尺寸

Dimensions

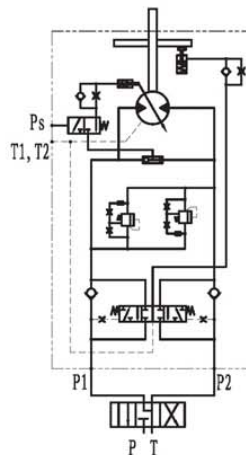


技术参数

Technical Data

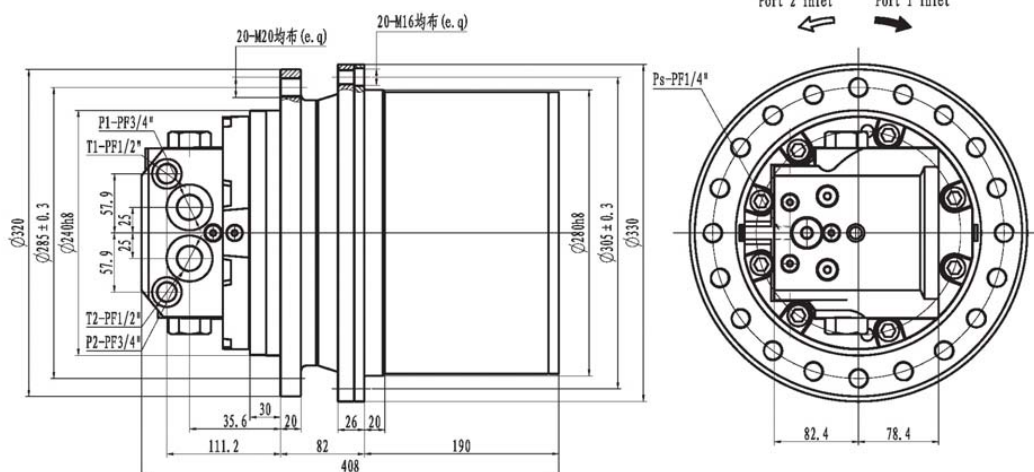
最大输出扭矩	最大总排量	最大马达排量	传动比	最高输入转速	高低速比	最大流量	最高压力	重量	适用机重
Max. Output Torque	Max. Total Displacement	Max. Motor Displacement	Gear Ratio	Max. Speed	Speed Ratio	Max. Flow	Max. Pressure	Mass	Applicable Vehicle Mass
N.m	ml/rev	ml/rev		rpm	High/Low	L/min	MPa	Kg	Ton
17000	8957	87.3	77.9 · 88.2 102.6	2800	Max. 1.8	150	35	165	8 ~ 12

液压原理图



外形尺寸

Dimensions

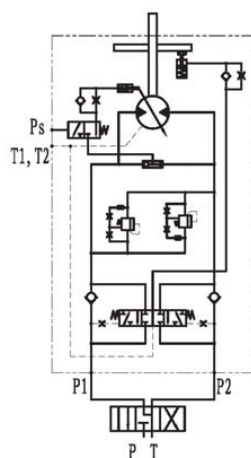


技术参数

Technical Data

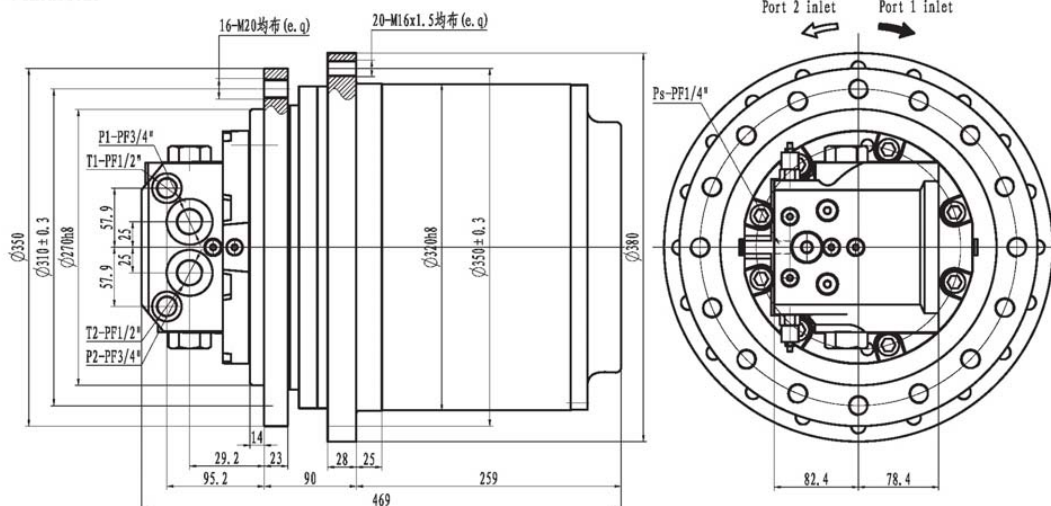
最大输出扭矩	最大总排量	最大马达排量	传动比	最高输入转速	高低速比	最大流量	最高压力	重量	适用机重
Max. Output Torque	Max. Total Displacement	Max. Motor Displacement	Gear Ratio	Max. Speed	Speed Ratio	Max. Flow	Max. Pressure	Mass	Applicable Vehicle Mass
N. m	ml/rev	ml/rev		rpm	High/Low	L/min	MPa	Kg	Ton
24000	11977.6	87.3	90.1 · 102.6 120.5 · 137.2	2800	Max. 1.8	150	35	170	12 ~ 15

液压原理图



外形尺寸

Dimensions

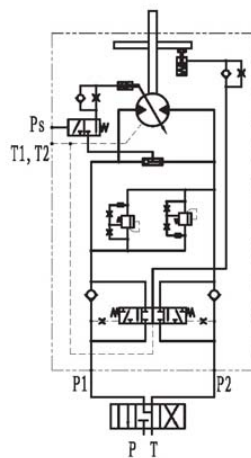


技术参数

Technical Data

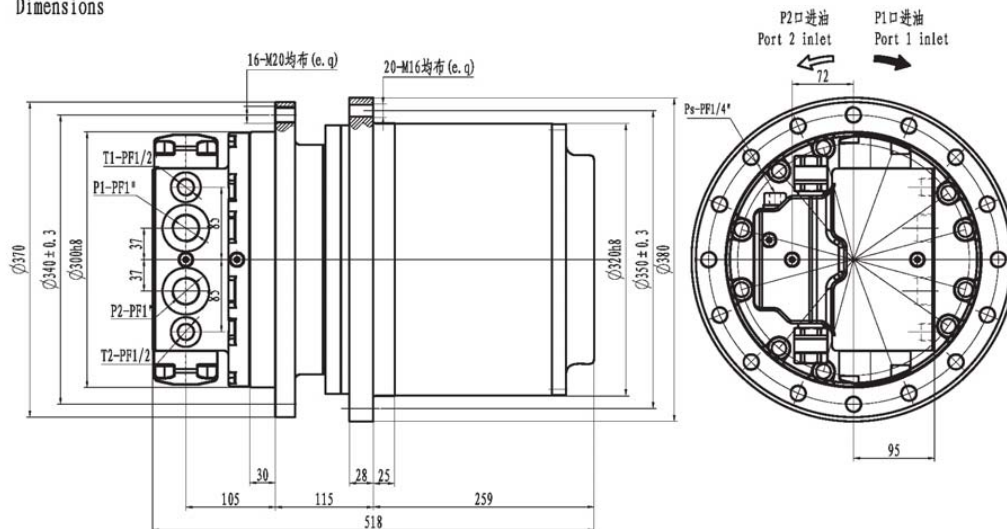
最大输出扭矩 Max. Output Torque N. m	总排量 Total Displacement ml/rev	最大马达排量 Max. Motor Displacement ml/rev	传动比 Gear Ratio	最高输入转速 Max. Speed rpm	高低速比 Speed Ratio High/Low	最大流量 Max. Flow L/min	最高压力 Max. Pressure MPa	重量 Mass Kg	适用机重 Applicable Vehicle Mass Ton
36000	11384 / 5607	87.3	67 · 79.4 100 · 116.6 130.4	2800	Max. 1.8	150	35	235	15 ~ 25

液压原理图



外形尺寸

Dimensions

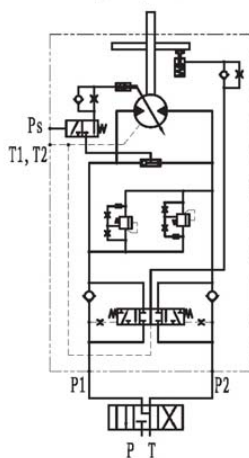


技术参数

Technical Data

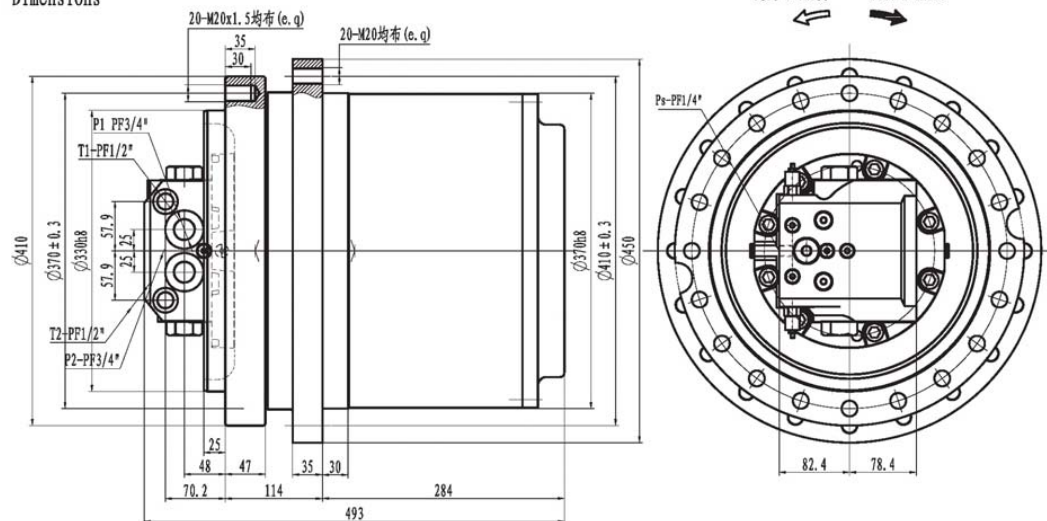
最大输出扭矩	最大总排量	马达排量	传动比	最高输入转速	高低速比	最大流量	最高压力	重量	适用机重
Max. Output Torque	Max. Total Displacement	Motor Displacement	Gear Ratio	Max. Speed	Speed Ratio	Max. Flow	Max. Pressure	Mass	Applicable Vehicle Mass
N. m	ml/rev	ml/rev		rpm	High/Low	L/min	MPa	Kg	Ton
36000	14832.3	171.6	67 · 79.4 100 · 116.6 130.4	2800	Max. 1.8	150	35	255	20 ~ 35

液压原理图



外形尺寸

Dimensions

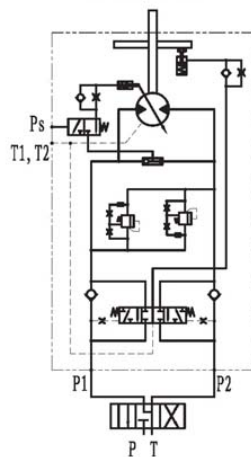


技术参数

Technical Data

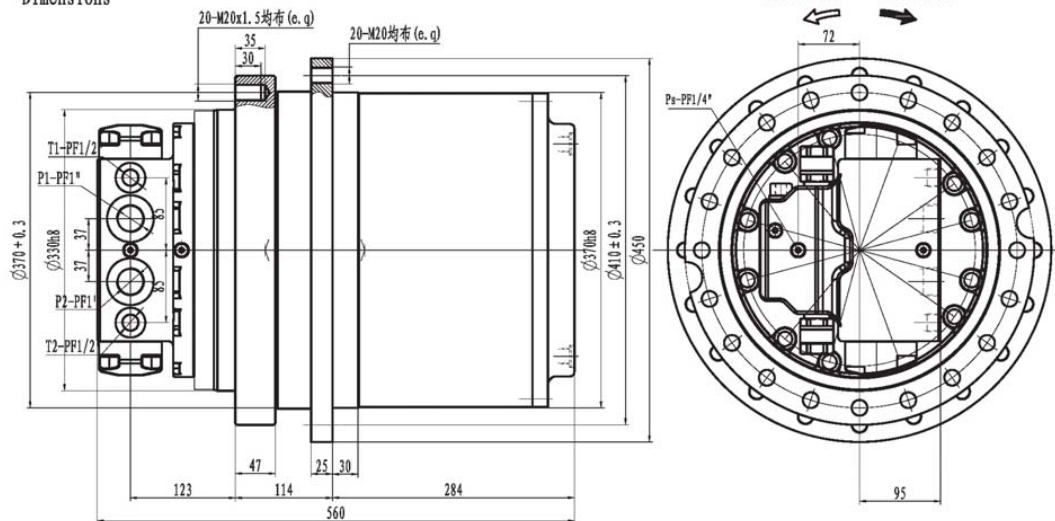
最大输出扭矩	总排量	马达排量	传动比	最高输入转速	高低速比	最大流量	最高压力	重量	适用机重
Max. Output Torque	Total Displacement	Motor Displacement	Gear Ratio	Max. Speed	Speed Ratio	Max. Flow	Max. Pressure	Mass	Applicable Vehicle Mass
N. m	ml/rev	ml/rev		rpm	High/Low	L/min	MPa	Kg	Ton
60000	14832.3 / 5607	87.3/55.5	86.5 · 94.8 105.5 · 119.8 139.9 · 169.9	2800	Max. 1.8	150	35	300	25 ~ 40

液压原理图



外形尺寸

Dimensions

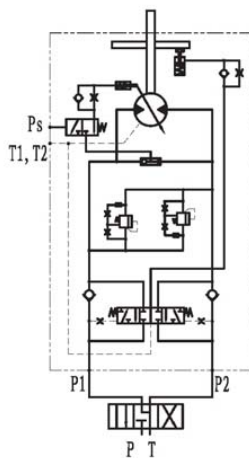


技术参数

Technical Data

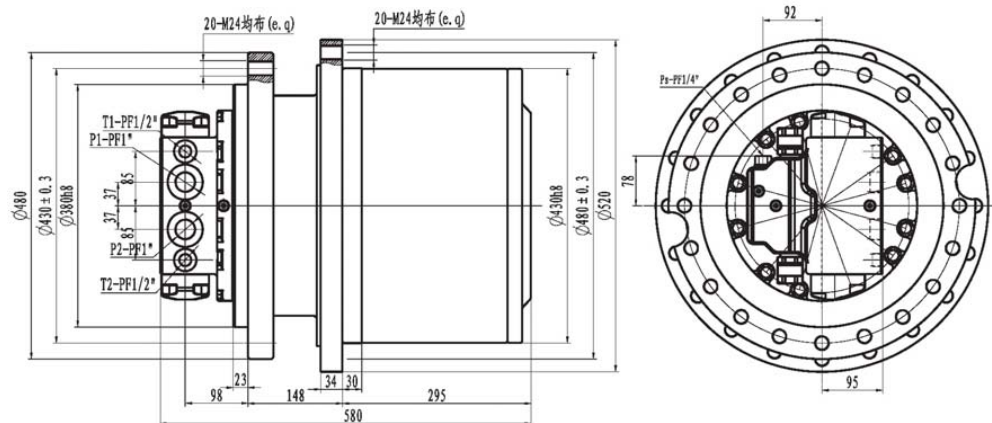
最大输出扭矩	最大总排量	马达排量	传动比	最高输入转速	高低速比	最大流量	最高压力	重量	适用机重
Max. Output Torque	Max. Total Displacement	Motor Displacement	Gear Ratio	Max. Speed	Speed Ratio	Max. Flow	Max. Pressure	Mass	Applicable Vehicle Mass
N. m	ml/rev	ml/rev		rpm	High/Low	L/min	MPa	Kg	Ton
60000	29154.84	171.6/111	86.5 · 94.8 105.5 · 119.8 139.9 · 169.9	2800	Max. 1.8	150	35	300	25 ~ 40

液压原理图



外形尺寸

Dimensions

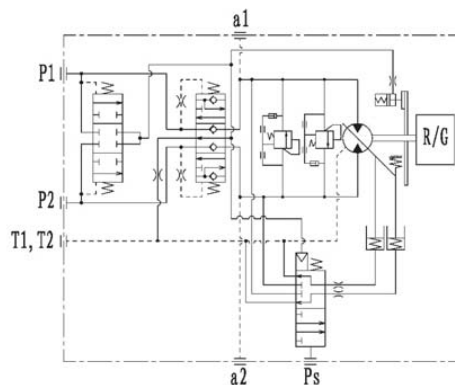


技术参数

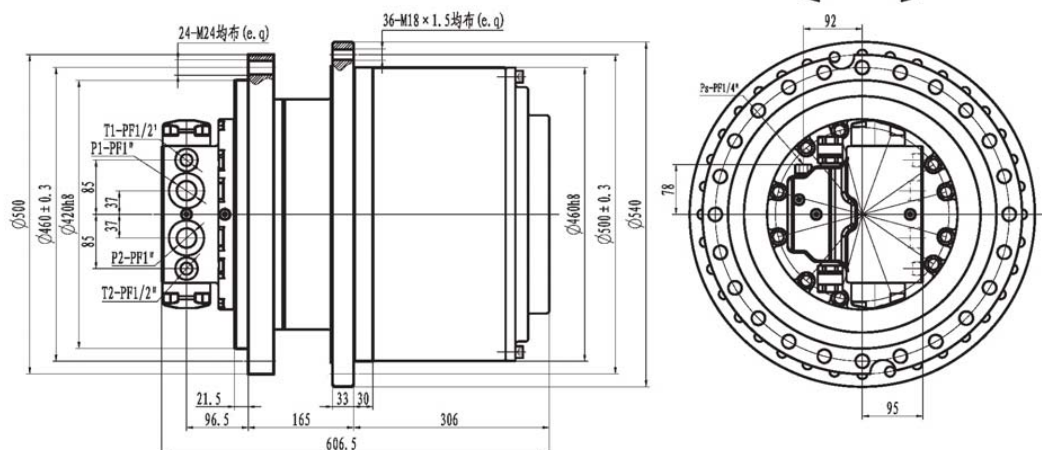
Technical Data

最大输出扭矩	最大总排量	马达排量	传动比	最高输入转速	高低速比	最大流量	最高压力	重量	适用机重
Max. Output Torque	Max. Total Displacement	Motor Displacement	Gear Ratio	Max. Speed	Speed Ratio	Max. Flow	Max. Pressure	Mass	Applicable Vehicle Mass
N. m	ml/rev	ml/rev		rpm	High/Low	L/min	MPa	Kg	Ton
80000	31814.6	171.6	76.7 · 99	2500	Max. 2	250	35	435	35 ~ 50
		171.6/111	110.9 · 126.9 149.9 · 185.4						

液压原理图



外形尺寸
Dimensions

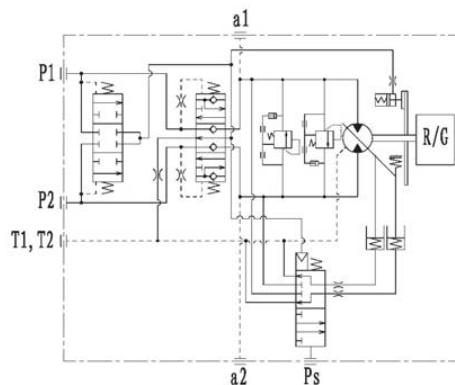


技术参数

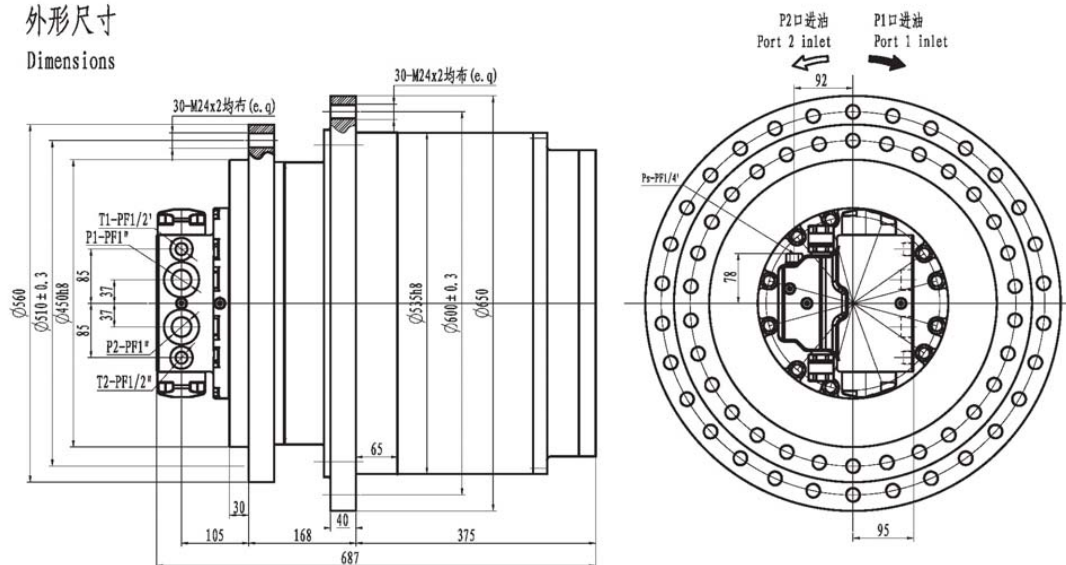
Technical Data

最大输出扭矩 Max. Output Torque N.m	最大总排量 Max. Total Displacement ml/rev	马达排量 Motor Displacement ml/rev	传动比 Gear Ratio	最高输入转速 Max. Speed rpm	高低速比 Speed Ratio High/Low	最大流量 Max. Flow L/min	最高压力 Max. Pressure MPa	重量 Mass Kg	适用机重 Applicable Vehicle Mass Ton
110000	36894	171.6	95.8 · 114.8	2500	Max. 2	250	35	485	50 ~ 80
		171.6/111	128.6 · 147.2 173.9 · 215						

液压原理图



外形尺寸
Dimensions

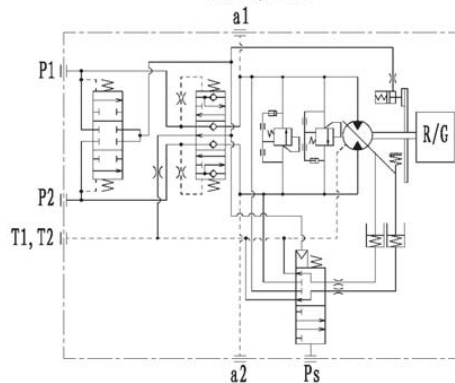


技术参数

Technical Data

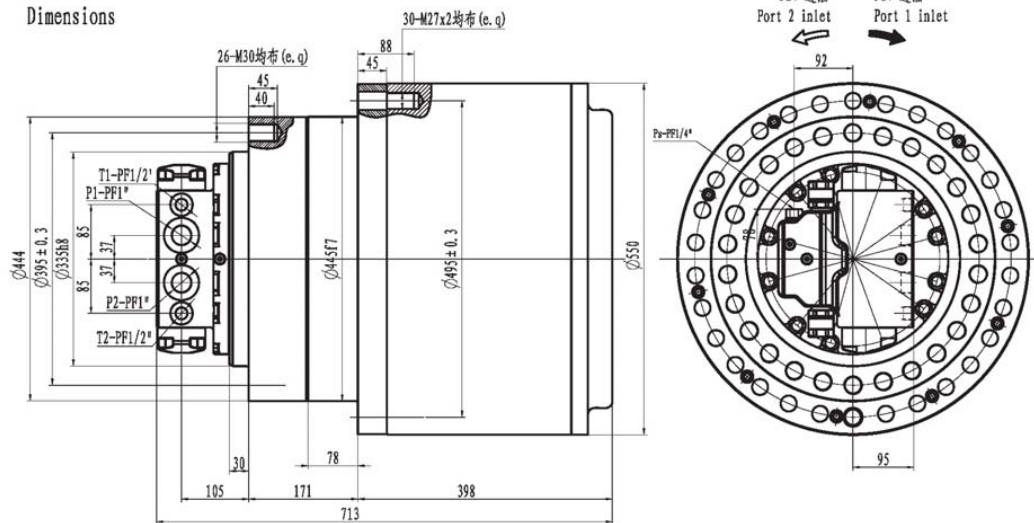
最大输出扭矩 Max. Output Torque N.m	最大总排量 Max. Total Displacement ml/rev	马达排量 Motor Displacement ml/rev	传动比 Gear Ratio	最高输入转速 Max. Speed rpm	高低速比 Speed Ratio High/Low	最大流量 Max. Flow L/min	最高压力 Max. Pressure MPa	重量 Mass Kg	适用机重 Applicable Vehicle Mass Ton
160000	43071.6	171.6 171.6/111	161.8 · 210.8 251	2500	Max. 2	250	35	750	60 ~ 110

液压原理图



外形尺寸

Dimensions



技术参数

Technical Data

最大输出扭矩	最大总排量	马达排量	传动比	最高输入转速	高低速比	最大流量	最高压力	重量	适用机重
Max. Output Torque	Max. Total Displacement	Motor Displacement	Gear Ratio	Max. Speed	Speed Ratio	Max. Flow	Max. Pressure	Mass	Applicable Vehicle Mass
N. m	ml/rev	ml/rev		rpm	High/Low	L/min	MPa	Kg	Ton
180000	43071.6	171.6	161.8 · 210.8 251	2500	Max. 2	250	35	750	60~110
		171.6/111							

液压原理图

