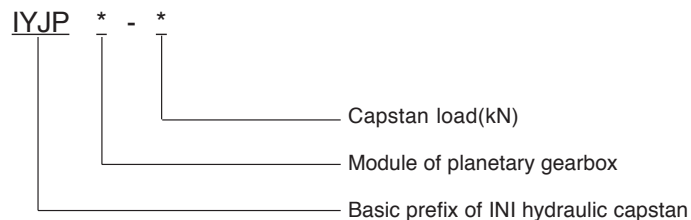


## IYJP Hydraulic Capstan Series

### 1. Brief Introduction

IYJP hydraulic capstan series are patent products of our company. They consist of valve blocks with function of brake and overload protection, hydraulic motor, planetary gearbox, wet type brake, capstan head, frame and so on. Due to fit with valve block, not only simplified the design of hydraulic system but also improved the reliability of drives. In addition, the series feature high startup efficiency and working efficiency, high power, low noise, compact figure, good economy. Therefore the series have been widely applied in ship and deck machinery. The series not only have been popular in domestic market, but also have been exported to Southeast Asia, Holland, Australia and so on.

### 2. Model Options

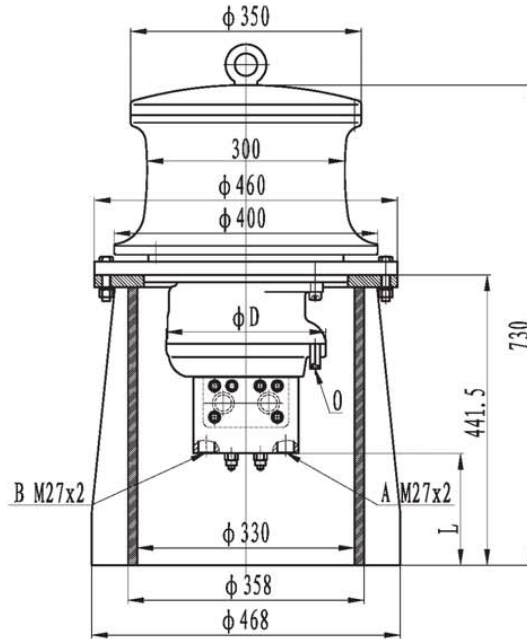


### 3. Options Example

IYJP3-20 represents that the series capstan adopts single stage planetary gearbox, the module of gearbox is 3, and the capstan load is 20kN.

### 4. Parameter Description

- Total displacement represents capacity of oil supply per revolution.
- Capacity of oil supply represents theoretic oil flow from supply pump.
- Working pressure differential represents pressure drop between inlet port and outlet port of hydraulic motor.

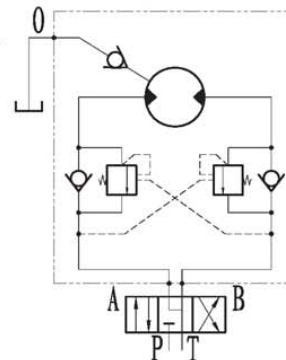


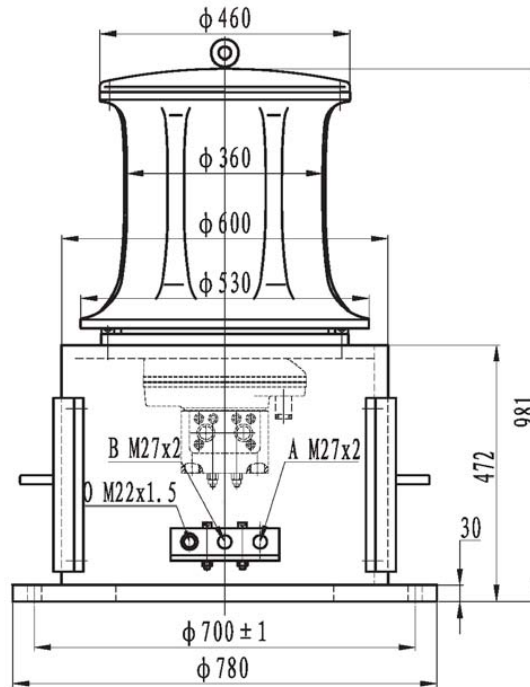
型号 Model	系统负载 System load (kN)	公称速度 Nominal speed (m/min)	钢丝绳直径 Diameter of rope (mm)	工作压差 Working pressure differential (MPa)	总排量 Displacement (ml/r)	供油流量 Oil supply (L/min)	液压马达型号 Hydraulic motor model	齿轮箱型号 Planetary gearbox model	D	L	O
IYJP3-10	10	25	13	14	860	25	INM1-175D47+F1202	C3AC (I=5)	242	170.6	G1/4"
IYJP3-20	20	20	15	12	2125	48	INM2-420D47+F1202	C3AC (I=5)	304	144.6	G1/2"
IYJP3-30	30	20	17	13	2825	63	INM2-550D47+F1202	C3AC (I=5)	304	144.6	G1/2"

液压原理图  
Hydraulic principle diagram

注：当3位4通换向阀需要“O”或“M”机能时马达与双向平衡阀之间必须设置双向缓冲过载阀。

Note: When the neutral position function of 3/4 directional valve is "o" or "M" type, crossover relief valve should be settled between hydraulic motor and bi-counterbalance valve.





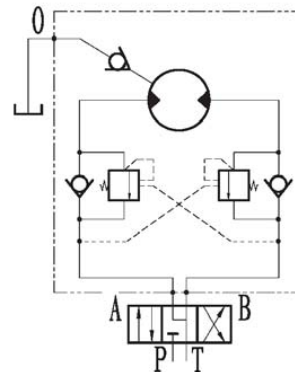
型号 Model	系统负载 System load (KN)	公称速度 Nominal speed (m/min)	钢丝绳直径 Diameter of rope (mm)	工作压力差 Working pressure differential (MPa)	总排量 Displacement (ml/r)	供油流量 Oil supply (L/min)	液压马达型号 Hydraulic motor model	齿轮箱型号 Planetary gearbox model
IYJP4-40	40	15	20	14.5	3955	56	INM2-600D47+F1202	C4C (I=7)
IYJP4-50	50	15	20	16	4361	60	INM2-630D47+F1202	C4C (I=7)
IYJP4-60	60	15	22	19.5	4361	60	INM2-630D47+F1202	C4C (I=7)

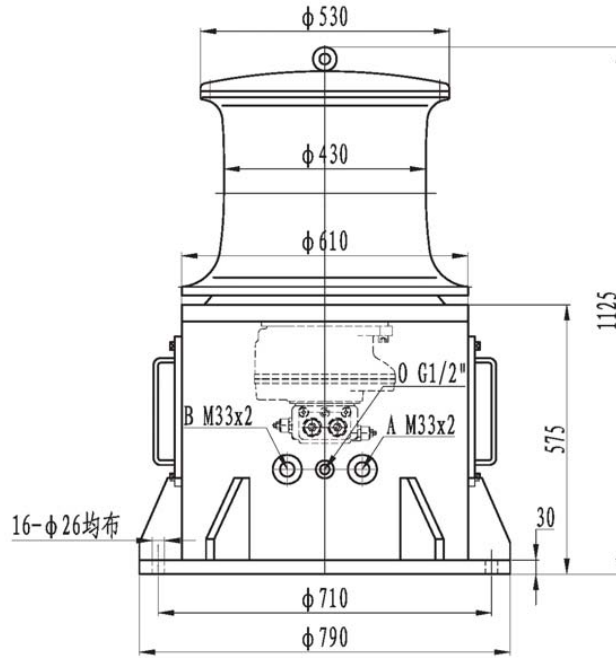
液压原理图

Hydraulic principle diagram

注: 当3位4通换向阀需要“O”或“M”机能时马达与双向平衡阀之间必须设置双向缓冲过载阀。

Note: When the neutral position function of 3/4 directional valve is "o" or "M" type, crossover relief valve should be setted between hydraulic motor and bi-counterbalance valve.





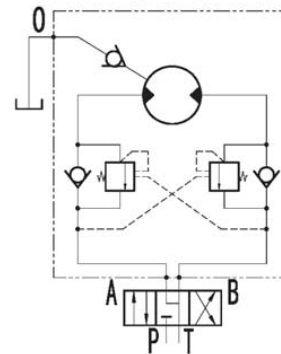
型号 Model	系统负载 System load (KN)	公称速度 Nominal speed (m/min)	钢丝绳直径 Diameter of rope (mm)	工作压差 Working pressure differential (MPa)	总排量 Displacement (ml/r)	供油流量 Oil supply (L/min)	液压马达型号 Hydraulic motor model	齿轮箱型号 Planetary gearbox model
IYJP34-80	80	12	24	12	11900	111	INM2-420D240221	C34C(I=28)
IYJP34-90	90	12	26	13.5	11900	111	INM2-420D240221	C34C(I=28)
IYJP34-100	100	12	28	15	11900	111	INM2-420D240221	C34C(I=28)

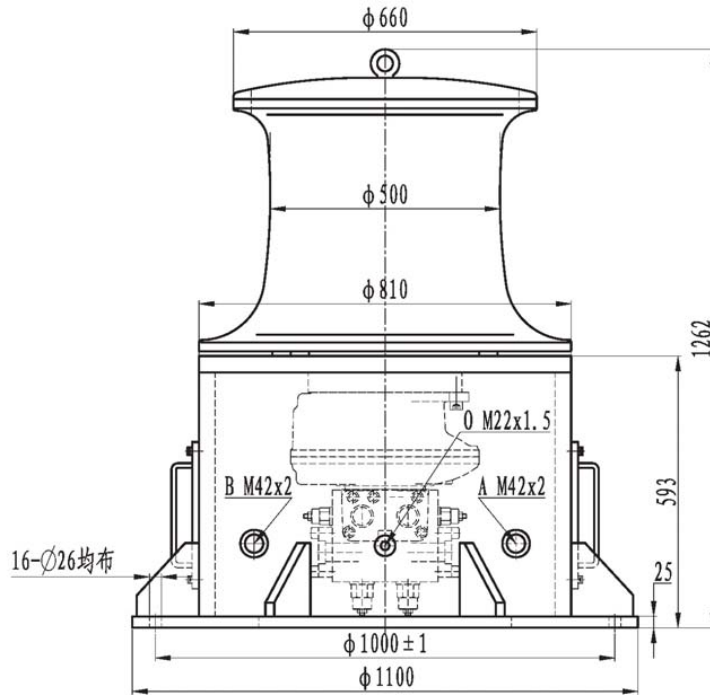
液压原理图

Hydraulic principle diagram

注: 当3位4通换向阀需要“O”或“M”机能时马达与双向平衡阀之间必须设置双向缓冲过载阀。

Note: When the neutral position function of 3/4 directional valve is "o" or "M" type, crossover relief valve should be setted between hydraulic motor and bi-counterbalance valve.





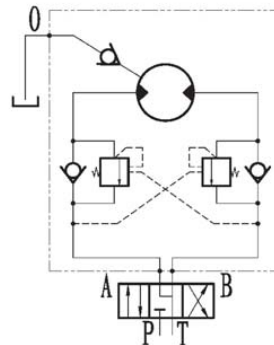
型号 Model	系统负载 System load (kN)	公称速度 Nominal speed (m/min)	钢丝绳直径 Diameter of rope (mm)	工作压差 Working pressure differential (MPa)	总排量 Displacement (ml/r)	供油流量 Oil supply (L/min)	液压马达型号 Hydraulic motor model	齿轮箱型号 Planetary gearbox model
IYJP45-120	120	12	30	14	17248	138	INM4-600D90+F480221	C45(I=28)
IYJP45-140	140	12	32	16	17248	138	INM4-600D90+F480221	C45(I=28)
IYJP45-150	150	12	32	14	22204	177	INM4-800D90+F480221	C45(I=28)
IYJP45-160	160	12	34	15	22204	177	INM4-800D90+F480221	C45(I=28)

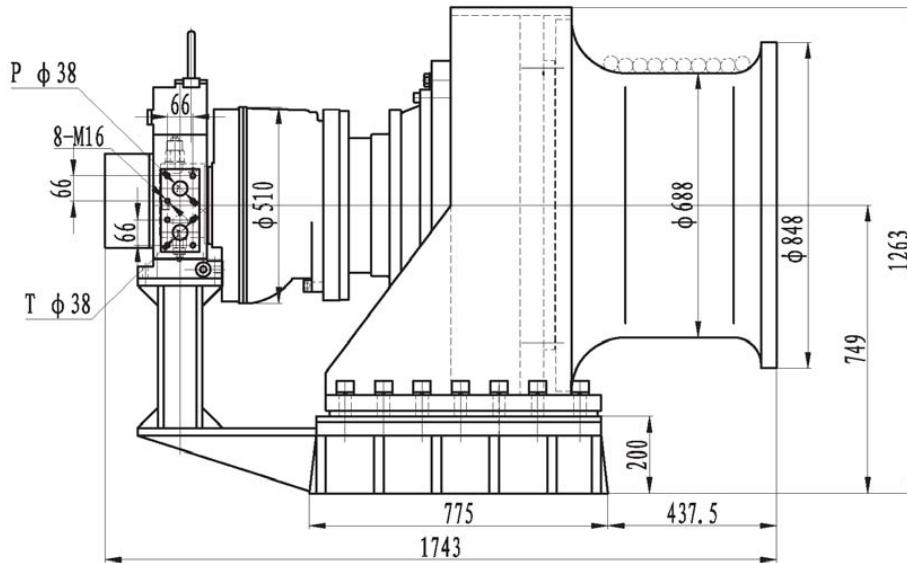
液压原理图

Hydraulic principle diagram

注: 当3位4通换向阀需要“O”或“M”机能时马达与双向平衡阀之间必须设置双向缓冲过载阀。

Note: When the neutral position function of 3/4 directional valve is "o" or "M" type, crossover relief valve should be setted between hydraulic motor and bi-counterbalance valve.



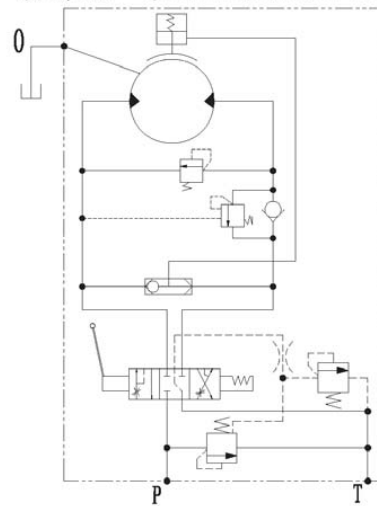


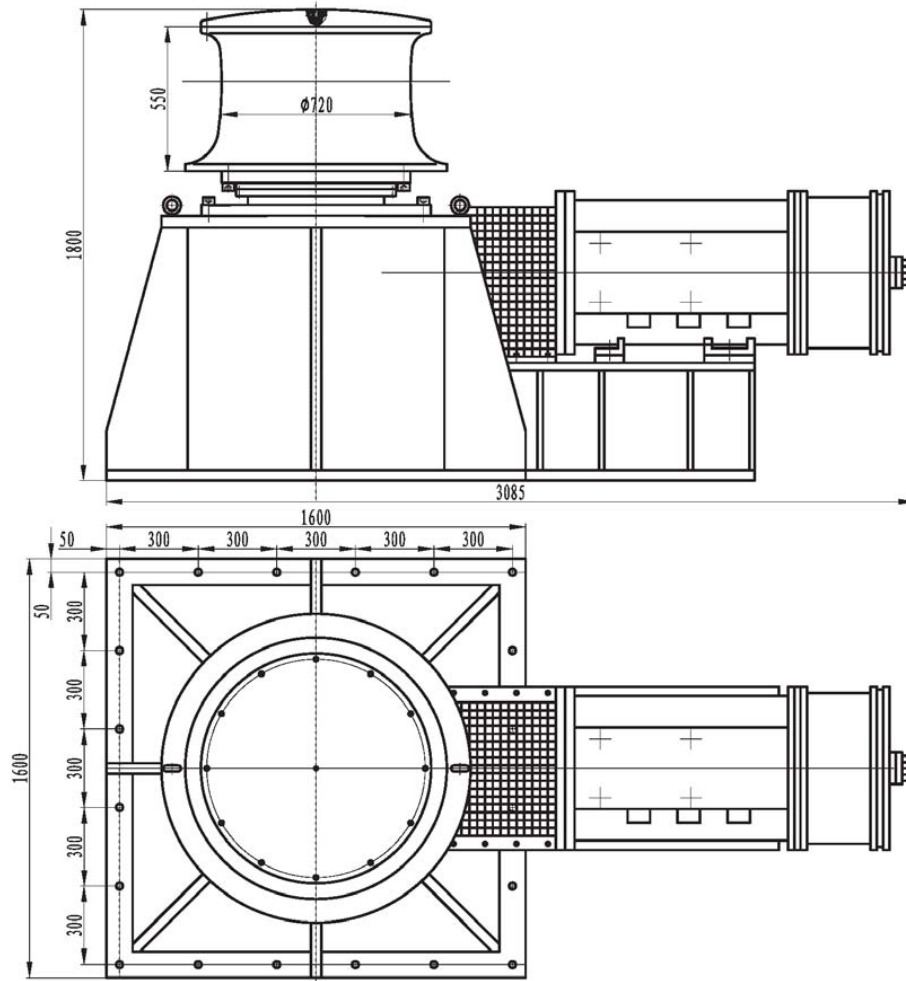
型号 Model	系统负载 System load (KN)	公称速度 Nominal speed (m/min)	钢丝绳直径 Rope diameter (mm)	工作压差 Working pressure differential (MPa)	总排量 Displacement (ml/r)	供油流量 Oil flow supply (L/min)	液压马达型号 Hydraulic motor model	齿轮箱型号 Planetary gearbox model
IYJP79-240	240	10	36	14	46794	229	INM6-2000D90+F	C79 (I=22)
IYJP79-260	260	10	36	13	55286	270	INM6-2500D90+F	C79 (I=22)
IYJP79-280	280	10	38	11.5	66902	326	INM6-3000D90+F	C79 (I=22)
IYJP79-300	300	10	38	12.5	66902	326	INM6-3000D90+F	C79 (I=22)

液压原理图 Hydraulic principle diagram

注: 当3位4通换向阀需要“0”或“M”机能时马达与双向平衡阀之间必须设置双向缓冲过载阀。

Note: When the neutral position function of 3/4 directional valve is "0" or "M" type, crossover relief valve should be setted between hydraulic motor and bi-counterbalance valve.





型号 Model	系缆负载 System load (kN)	公称速度 Nominal speed (m/min)	钢丝绳直径 Diameter of rope (mm)	电机型号 Model of electromotor	电制 Parameter of electromotor		减速器 传动比 Ratio	电机功率 Power (kW)
					电压 (V) Volt (V)	频率 (Hz) Frequency (Hz)		
DJP988-300	300	20	40	YZ315L-4/8/16-H	415	50	89	135

注: 1. 表格里的外形尺寸均不包括电机尺寸, 用户若所配电机特殊, 则联接部分的过度板和连接套需特殊加工。

Note: 1. The dimension of general electric motor is included in above installation drawing.

If fitted electric motor is specific, the connection dimension is also changed.